

**Interreg
Europe**



European Union | European Regional Development Fund



*Sharing solutions
for better regional policies*

On the third call

Verena Priem

Policy Officer | Interreg Europe Joint Secretariat

v.priem@interregeurope.eu

22 February 2017 | National Info Day Riga

Summary



- **Terms of reference**
- **Reminder on the assessment**
- **Lessons learnt from previous calls**
- **Conclusion**



TERMS OF REFERENCE

Terms of reference: main features



Timing:

- Opening: **1 March 2017** (online system open)
- Closing: **30 June 2017** (midday Paris time)

- November 2016: assistance to applicants launched
- Early 2018 – expected start of projects

Terms of reference: main features



Thematic scope:

- No restrictions: open to all investment priorities
- But applications encouraged under environment and resource efficiency (priority axis 4)

Procedure:

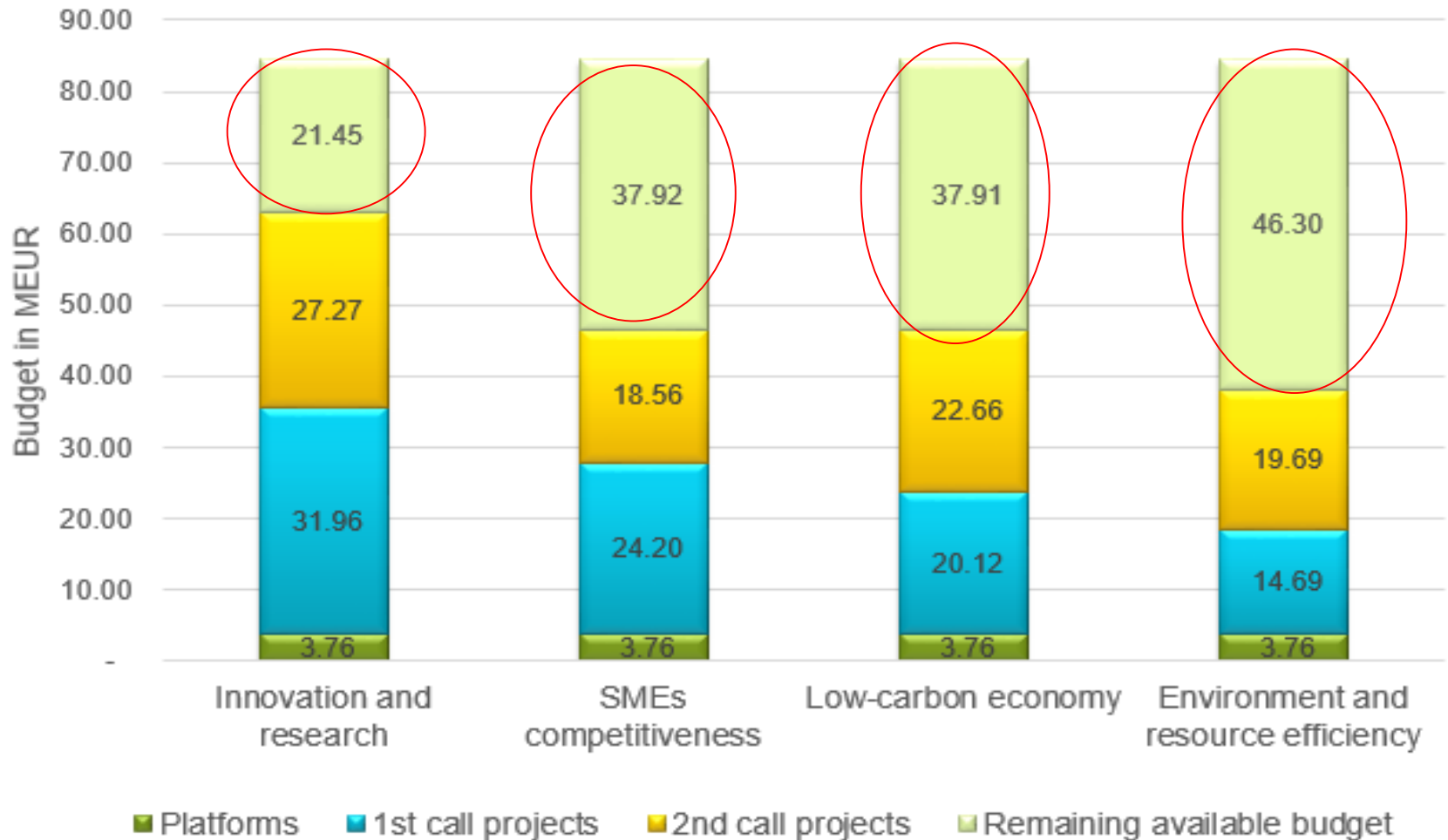
- Online system: www.iolf.eu



Terms of reference: main features



- All remaining ERDF per priority axis available





Terms of reference: recommendations

- Innovative character in particular in relation to already successful topics

| | |
|---|---|
| <p>Priority axis 1:</p> <ul style="list-style-type: none">- Governance of RIS3 (7 projects)- Clusters within RIS3 (6 projects)- Innovation in the health sector (4 projects) | <p>Priority axis 2:</p> <ul style="list-style-type: none">- Internationalisation of SMEs (7 projects)- Innovation capacity of SMEs in rural / peripheral regions (6 projects) |
| <p>Priority axis 3:</p> <ul style="list-style-type: none">- Energy efficiency in buildings (10 projects)- Urban mobility (7 projects) | <p>Priority axis 4:</p> <ul style="list-style-type: none">- Circular economy (6 projects) |



Terms of reference: recommendations

- Applications tackling under represented topics encouraged: **financial instruments, renewable energy or water management**
- Applications encouraged under Priority axis 4 **Environment & Resource Efficiency**
- Involvement of **regions not already represented** encouraged (annex 1 of the terms of reference)



REMINDER ON ASSESSMENT



Selection procedure

2-step procedure

- **1. Eligibility assessment:**
fulfilment of technical requirements
- **2. Quality assessment:**
two-step qualitative evaluation

Detailed description in the programme manual
(section 5.3)



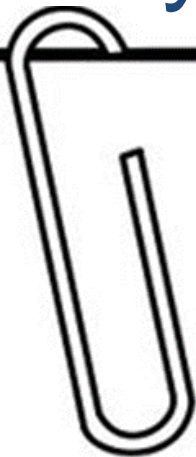
Eligibility principles

- Technical **yes** or **no** process
- **No correction possible** after submission
- Only eligible applications are further assessed





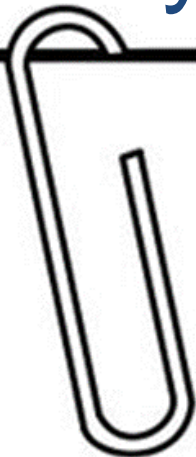
Eligibility checklist



- ✓ Is your application **complete** (partner declarations, support letters)?
- ✓ Is the application **filled in** according to instructions?
- ✓ Is it in **English**?
- ✓ Are all **partner declarations**:
 - Signed and dated
 - With name of partner identical to application form
 - With stated amount covering **at least** the amount of partner contribution in application
 - With no amendments to the standard text



Eligibility checklist



- ✓ Are **all support letters**:
 - Attached to the application form
 - Signed and dated by relevant organisation (check the country-specific list!!)
 - With name of partner(s) **identical** to application form
 - With no amendments to the standard text

- ✓ Are at least **3 countries** of which **2 are EU members** involved and financed by Interreg Europe?

- ✓ Are at least **half** of the policy instruments addressed Structural Funds programmes?

Quality assessment



Second step only for eligible applications!

Strategic ass.

- Relevance of proposal
- Quality of results
- Quality of partnership

Only adequate proposals (score ≥ 3.00) are further assessed

Operational ass.

- Coherence of proposal & quality of approach
- Communication & Management
- Budget & finances

- Decision by **monitoring committee**.
- Only projects reaching at least an **overall adequate level (≥ 3.00)** are recommended for approval (with conditions) to the monitoring committee



Assessment provisional timing

| | |
|---------------------------|----------------------------------|
| July – August 2017 | Eligibility check |
| September – November 2017 | Quality assessment |
| End 2017 | Decision & notification |
| Early 2018 | Fulfilment of conditions |
| Early 2018 | Effective start date of projects |



LESSONS LEARNT



Eligibility

One NO disqualifies whole project → no assessment!

- High rate of ineligibility (29.4%)
- Main causes of ineligibility:
 - Letters of support (missing or incorrect)
 - Partner declaration (incorrect – amount lower than necessary!)

**Make sure all documents are provided and correct.
Don't prepare them at the last minute!**



Eligibility

Lessons learnt integrated in the third call application pack:

- **Improved instructions** in the application pack: Warning messages included in different documents
- **Full online application** & improved functionalities: Compulsory documents to be uploaded on iOLF & automatic generation of annexes



Quality: common weaknesses

Topic addressed (Criterion 1):

- **Too broad scope / topic poorly** described
- **Not in line** with priority axis
- **Not reflected** in all the policy instruments addressed

Check approved projects at:

<http://www.interregeurope.eu/discover-projects/>



Quality: common weaknesses

Policy instruments (Criterion 1):

- Not **precisely defined** in the AF (e.g. indication of the specific priority addressed)
- Misunderstanding for Structural Funds (instrument indicated not the **Operational / Cooperation** programme)

Check country-specific pages for list of policy-relevant bodies for Structural Funds programmes at:

<http://www.interregeurope.eu/in-my-country/>



Quality: common weaknesses

Policy relevance of partners (Criterion 3):

- No direct involvement of bodies responsible for the policy instrument addressed
- No clear policy relevance of the partners involved: involvement in the policy-making process & capacity to influence the policy instrument
→ **Letter of support is not sufficient**

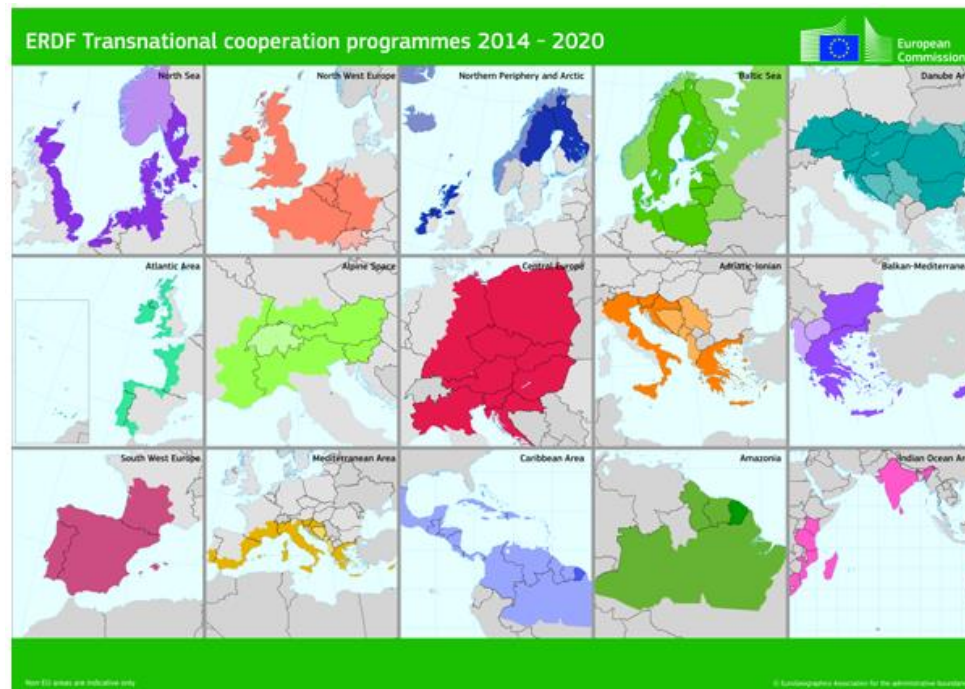
Dedicated question in section B.2 of the application form



Quality: common weaknesses

Geographical features (Criterion 3)

- Coverage limited to transnational areas



Go beyond transnational area!

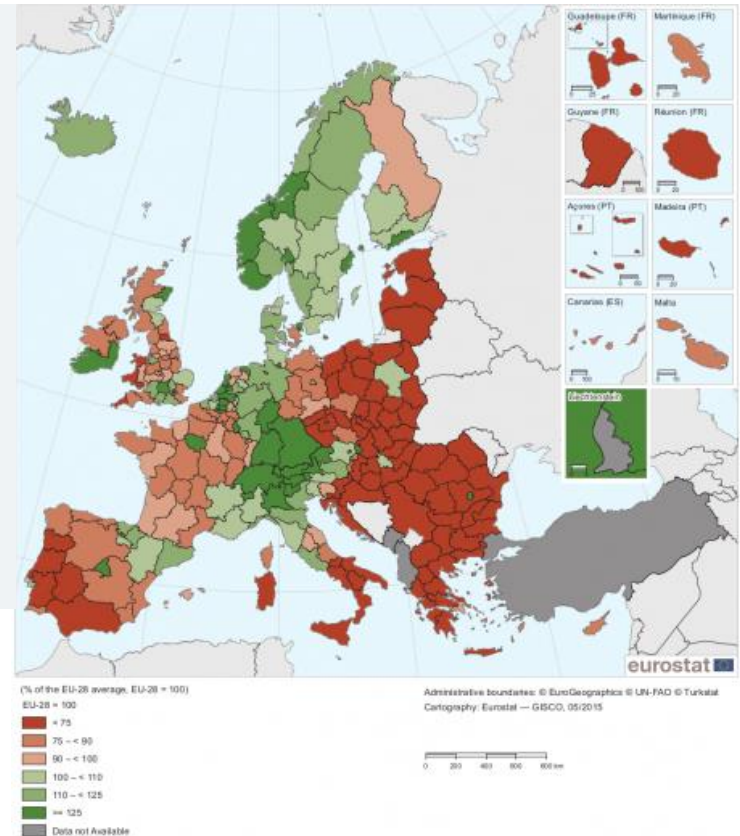


Quality: clarification

Mixing more and less developed regions (GDP) (Criterion 3):

'More and less developed regions', what does it mean?

The EC Cohesion policy aims at reducing disparities across regions in Europe. Interreg Europe contributes to this aim by encouraging regions with GDP per capita lower than 75% of the EU-28 average (less developed regions) to work with regions whose GDP per capita is higher (transition regions - GDP per capita between 75% and 90% of the EU-28 average – and more developed regions - GDP per capita above 90% of the EU-28 average). For more information, please check the [map](#) provided by the European Commission.



- Mix more and less developed regions (GDP)



Quality: justification

Multiple involvement (Criterion 3):

- Involvement in numerous applications very demanding and not recommended. Multiple involvement **should be justified**.



Be **strategic**: select only the most relevant project(s) for your region



CONCLUSION



Importance of the application form

Fairness and equal treatment principles

- Application Form = the **only basis** for assessment
- same information requested from all
- same technical requirements for all (e.g. text limits)


- Application form has to be **self-explanatory**:
additional information / clarification not possible after submission


Importance of the application form



A Project Summary

B.1 Partners


 **B.2 Policy Instruments** (definition and context, territorial context, partner relevance, stakeholders)

 **C.1 – C.5 Project Description** (story, issue addressed, objectives, approach, communication strategy,)

C.6 Expected results and outputs

C.7 Horizontal principles

C.8 Management

 **D.1 Phase 1** (per semester)

D.2 Phase 2

} Workplan

E Project Budget

F Annexes

See demo version of the application form in PDF:
http://www.interregeurope.eu/fileadmin/user_upload/documents/2017-02-16_AF_3rd_call_demo_version.pdf

Remember!

- ✓ Read the programme manual
- ✓ check the assessment criteria (eligibility & quality)
- ✓ Be specific, topic addressed needs to be focussed & reflected in policy instruments

- ✓ Start from the needs
- ✓ Involve policy-relevant partners
- ✓ Take the learning process seriously
- ✓ Communication serves your project
- ✓ first activities, then budget planning!



Useful links

Programme manual

- www.interregeurope.eu/help/programme-manual/

Application pack

- www.interregeurope.eu/apply/

Online application/ reporting system

- www.iolf.eu/

Interreg Europe community

- www.interregeurope.eu/account/dashboard/

Project development videos

- <http://www.interregeurope.eu/projects/project-development/>

**Interreg
Europe**



European Union | European Regional Development Fund



*Sharing solutions
for better regional policies*

Thank you!

Questions welcome



Interregeurope