



# Methane from landfills - projections

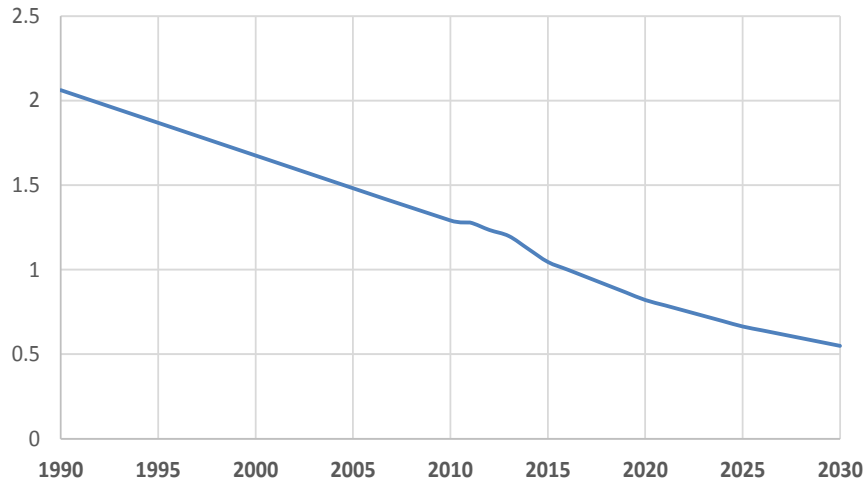
Workshop with Latvia and Lithuania, November 10, 2015

Eilev Gjerald, Norwegian Environment Agency

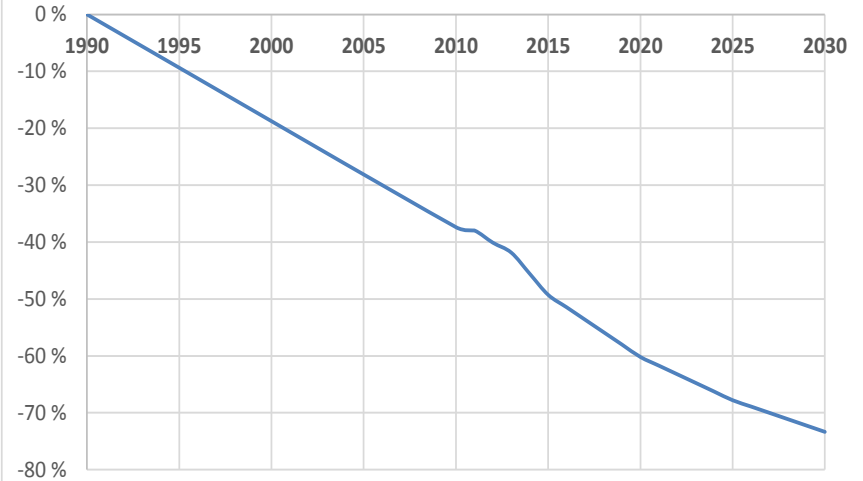


# Methane from landfills - emissions

Methane from landfills, mill t CO2 eq



Methane from landfills. 1990=0



# Methane from landfills - calculations

- Historical CH<sub>4</sub> emissions is calculated based on IPCC 2006 model
- The model is also used for projections (amount of waste deposited)

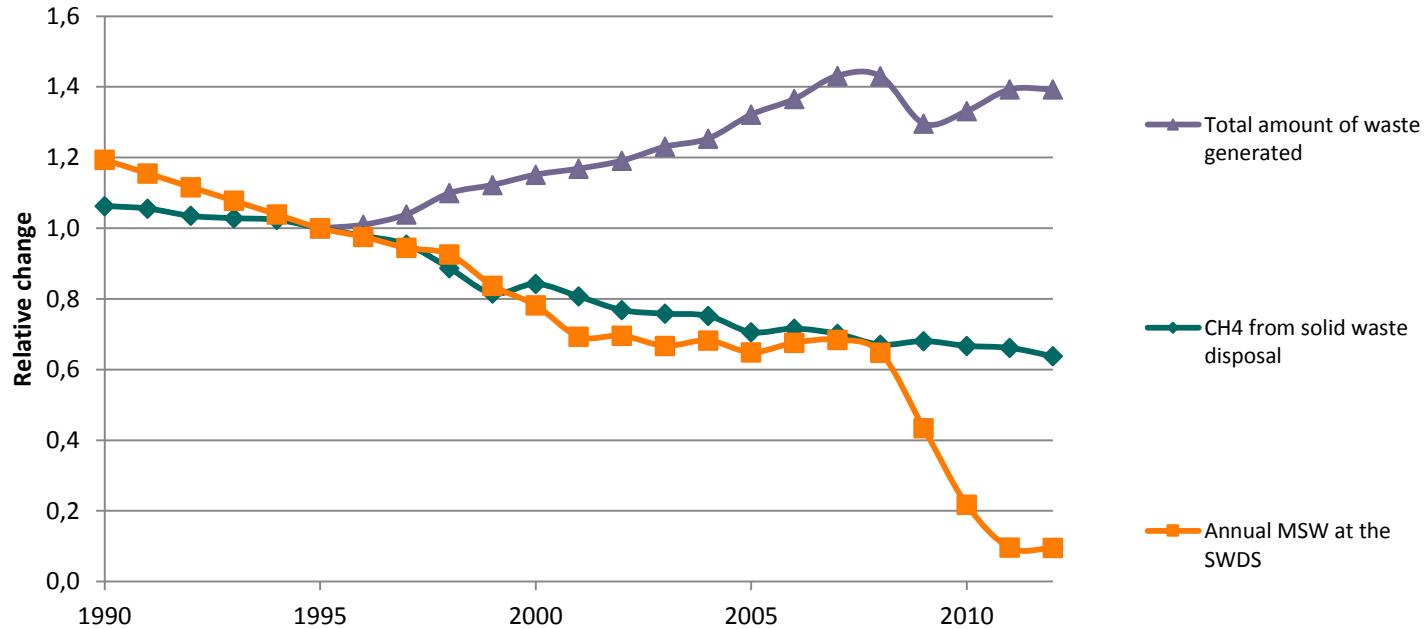
# Assumptions for the projections

- Prohibition of deposition of degradable organic waste at landfills 1 July 2009
- Waste landfilled 2012-2030; 90 000 t per year
- Recovery of methane; 20 per cent of calculated produced methane per year is recovered. That is equal to recovered gas in 2012

# Sensitivity analyses

- Amount of waste deposited
  - ✓ +/- 10% deposit: 2020 +/- 0.5 %, 2030 +/- 1.3 % (4-7 000 t CO<sub>2</sub> eq.)
- Recovery
  - ✓ +/- 1% recovery: 2020 and 2030 +/- 1.3 %
  - ✓ 2020: +/- 10 000 t and 2030: +/- 7 000 t CO<sub>2</sub> eq.

# Waste sector





[www.miljodirektoratet.no](http://www.miljodirektoratet.no)