



ZEMGALE

**PLANNING REGION
SUSTAINABLE DEVELOPMENT
STRATEGY 2030**

ZEMGALE

DOBELE MUNICIPALITY
IECAVA MUNICIPALITY
VECUMNIEKI MUNICIPALITY

OZOLNIEKI MUNICIPALITY

SKRĪVERI MUNICIPALITY

AUCE MUNICIPALITY

AIZKRAUKLE MUNICIPALITY

KOKNESE MUNICIPALITY

PLĀVINAS MUNICIPALITY

KRUSTPILS MUNICIPALITY

JELGAVA CITY

BAUSKA MUNICIPALITY

JAUNJELGAVA MUNICIPALITY

JĒKABPILS CITY

JELGAVA MUNICIPALITY

RUNDALE MUNICIPALITY

VIESĪTE MUNICIPALITY

SALA MUNICIPALITY

AKNĪSTE MUNICIPALITY

JĒKABPILS MUNICIPALITY

TĒRVETE MUNICIPALITY

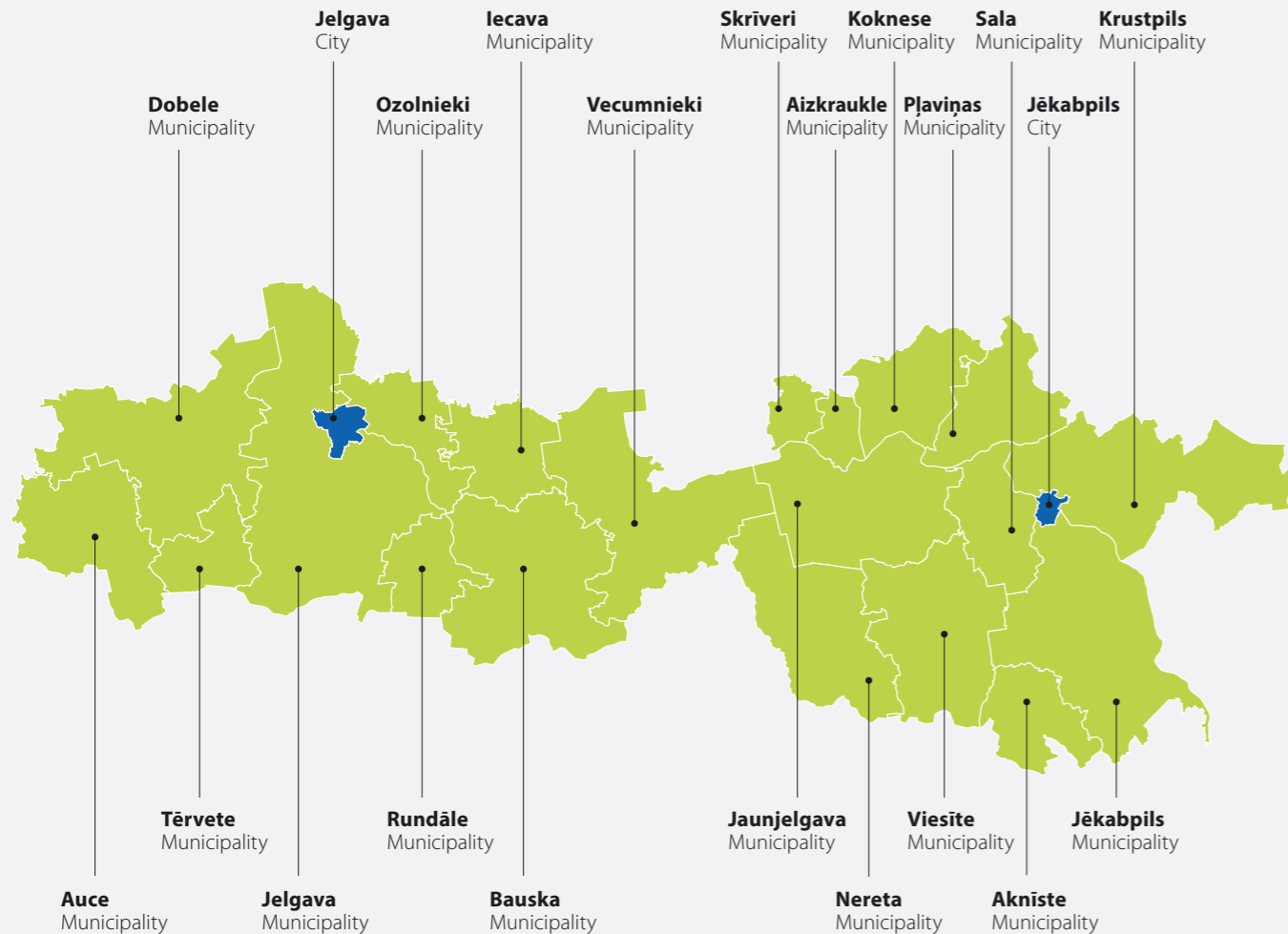
NERETA MUNICIPALITY

The booklet is financed by the Norwegian Financial Mechanism programme 2009–2014 No. LV 07 “Capacity-building and Institutional Cooperation between Latvian and Norwegian Public Institutions, Local and Regional Authorities” project No. 4.3–24/NFI/INP–002 “Increasing territorial development planning capacities of planning regions and local governments of Latvia and elaboration of development planning documents”





Local Governments of Zemgale Planning Region



A region, municipality and city cannot develop isolated, detached from one another, from a common strategy of the state and development directions. Therefore, it is important that planning documents elaborated in regions are in close interaction, respecting the interests of inhabitants and national interests. Historically, Zemgale and its centre Jelgava have always had a great role in economic, educational and cultural life of Latvia. Considering the geographical location, the region unites the state's eastern and western parts with highways, railway lines, and with comprehensive educational and cultural services.

An arranged environment, infrastructure, transport system, professional human resources trained according to the labour market requirements are the most important preconditions for the economic development of the state and the region. A direction of the large cities – Jelgava and Jēkabpils – towards improvements of the offer of industrial and business development and qualitative education creates a favourable environment for living and investment attraction.

The specialisation of the economic development of Zemgale region remains unchanged – it is agriculture and processing of its products, as well as forestry, industry and tourism. Latvia University of Agriculture and vocational educational institutions have an important intellectual potential to achieve the development goals of Latvia and Zemgale. The main goals, development directions and tasks set by the Zemgale Planning Region Sustainable Development Strategy 2030 will ensure future economic growth, inhabitant wellbeing, an attractive environment, and competitiveness of the region.



Chairman of Zemgale
Planning Region
Development Council

Andris Rāviņš





Activity and Functions of the Region

Zemgale Planning Region in accordance with the area of responsibility provided by law:

- Defines the fundamental principles, goals and priorities of the strategy for sustainable development of Zemgale Planning Region, coordinates activities to reach them.
- In cooperation with local governments and public authorities, elaborates the regional development planning documents, ensures that documents are mutually harmonised and accordant with the Sustainable Development Strategy of Latvia and with the National Development Plan.
- Manages and monitors the elaboration and implementation of regional development planning documents.
- Coordinates and enhances elaboration, implementation, monitoring and evaluation of support measures for the planning region's regional development, regional project elaboration and implementation.
- Coordinates the cooperation of the region's local governments in matters of tourism, business, education, environment, electric power industry, culture and social life.
- Ensures the coordination of culture industry development in Zemgale Region.
- Provides statements on the local level development strategy and development programme compliance with territorial development planning documents of the regional level, as well as with the system of development planning document regulations.
- Ensures the cooperation of the region's local governments with institutions of the national level for the implementation of regional development support measures.
- Evaluates the project applications submitted by local governments or individuals for the receipt of state support for regional development and provides statements on them.
- Monitors whether laws and other standard acts in public transport services are followed.
- Prepares proposals for the Council of the Public Transport and the State Ltd. "Road Transport Administration" about planning and elaboration of routes of regional importance and about acceptance of the tariffs of public transport services.
- Clarifies and summarises opinions of local governments and their inhabitants about the route network in the region.
- Inspects the bus stations in the planning region's territory and provides proposals on their necessity.

General Information about the Region



Area

10 732 km²
16.6% of the total area of Latvia /CSB/



Population

242 150
12.2% of the population of Latvia of Latvia /CSB, 2015/



Number of local governments

22 local governments



Cities of national significance

Jelgava, Jēkabpils



Urban/ rural areas

116 632 inhabitants live in urban areas (48%), **125 518** live in rural areas (52%) /CSB, 2015/



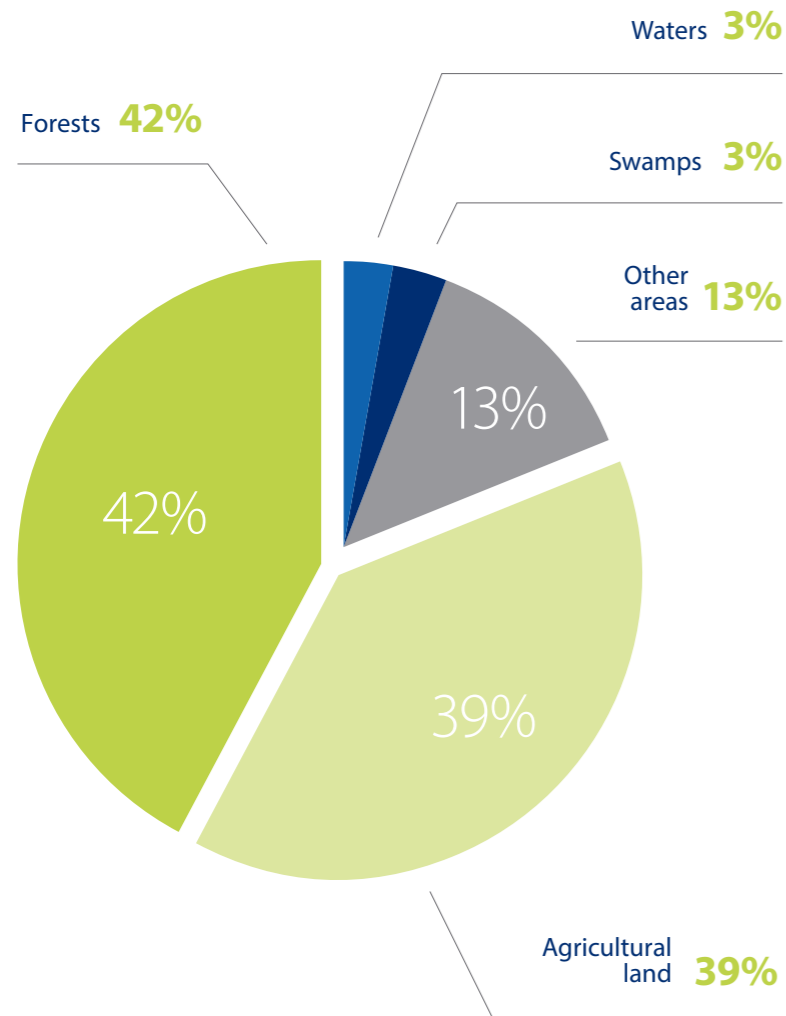
Local bruto payment

645 EUR /CSB, 2014/





Special Values of Zemgale



Source: Central Statistical Bureau, 2014

Developed industrial production – metal-processing, wood-processing, chemical industry, mining industry and textile industry

The richest agriculture lands in Latvia, developed agriculture and processing of agricultural products – Zemgale is called the granary of Latvia

Educational centre of international significance – Latvia University of Agriculture

Developed business infrastructure – nine science centres, two technology centres, two logistics parks and three industrial parks, as well as a network of business incubators

Important cross points of transport passages, main state highways and railway lines, Via Baltica, Rail Baltica. Important heritage – Rundāle Palace, Koknese Castle ruins, Tērvete Nature Park and others

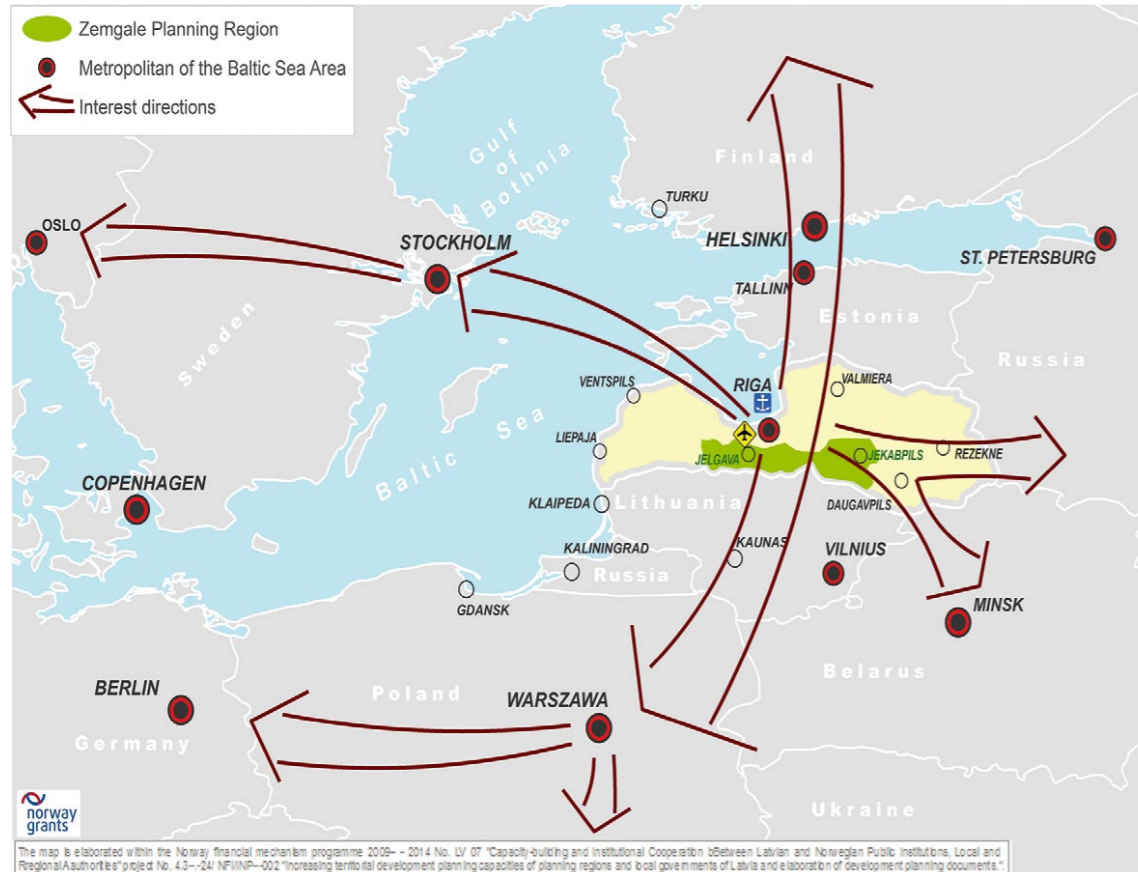
Zemgale is crossed by the two largest rivers of Latvia – Daugava and Lielupe

Zemgale Region





The Region's Role in Latvia and the Baltic Region



Zemgale Planning Region is located in the central part of Latvia, along the borderline of Latvia and Lithuania. It is important to note that the closeness of Riga is one of the key factors of Zemgale development – the biggest part of the region is located within a radius of 100 km from Riga. The region is crossed by eastern, western, northern and southern road and railway corridors of both national and international significance. Along with the development of VIA Baltica and Rail Baltica, the importance of Zemgale as a North-South transport corridor will increase in the future.

Development Vision of Zemgale Planning Region

Zemgale in 2030 – a competitive, green region in the centre of Latvia with a qualitative and accessible living environment

People

The number of inhabitants in the region is stable. Inhabitants choose their place of living in Zemgale due to the attractive space of living and work. In the region the majority of inhabitants in working age have higher or professional education and the majority are involved in processes of life-long education. Inhabitants of the region feel proud to live in Zemgale. The Latvian cultural space is a base that unites the society of Zemgale – each and every individual is entitled to choose its own identity and can easily integrate in the society.

Values

Zemgale is a green region in the centre of Latvia with the richest agricultural lands, diverse mineral resources, forests and water resources, unpolluted and only slightly modified natural environment. It is a region with its own cultural environment, heritage, ancient traditions and potential of tourism. Latvia University of Agriculture – a well-known and powerful university of knowledge and technology transfer in the Baltics, successfully carries out cooperation projects with the region and local governments regarding innovation implementation.

Business activities

The manufacturing enterprises important for the economics of the state and region are concentrated in centres of national and regional significance. Intensive agriculture and eco-management live together and

develop successfully, a cooperation and specialisation is going on. The business support and innovation system, company cooperation networks (clusters) work effectively. In Zemgale, the formation and activity of social enterprises is enhanced by involving the society in the process of social problem settlement.

Accessibility

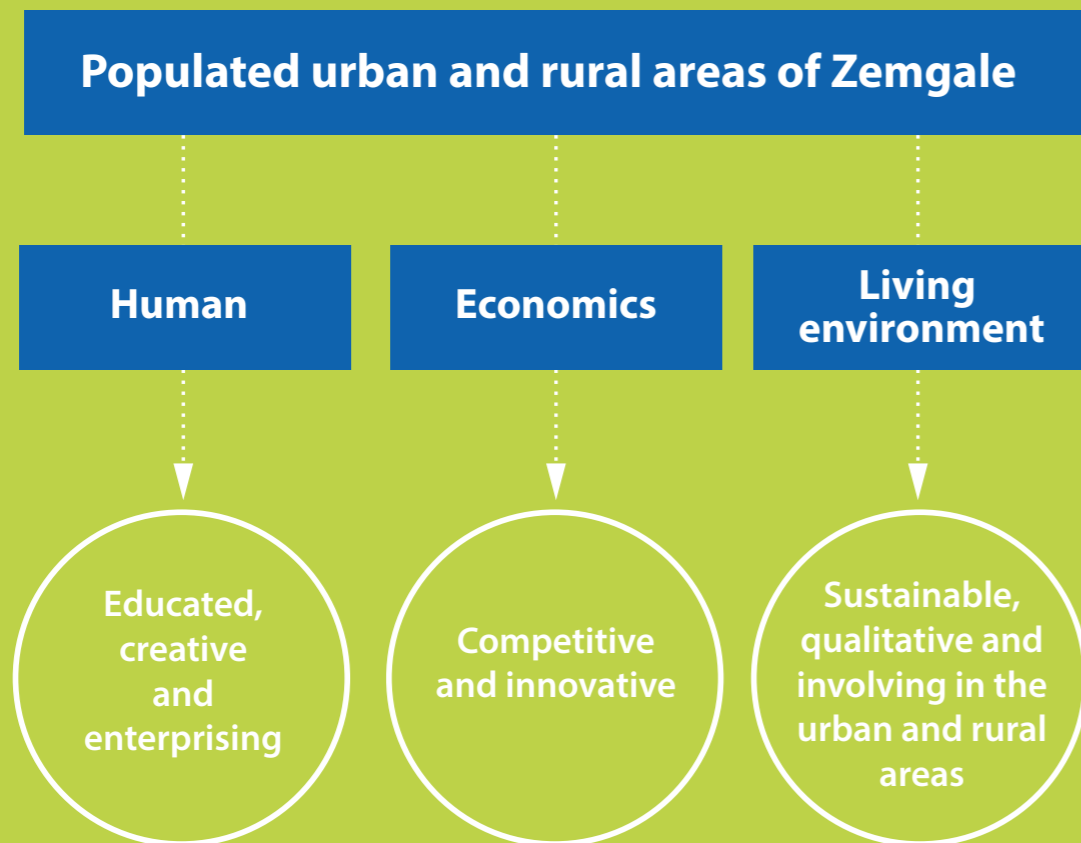
The region is a common space for living and working with a qualitative, effective and environmentally friendly transport system and infrastructure, which is based on public transport networks that ensure regular accessibility in the territory according to requirements of everyday mobility. In both public administration and economic activity, the information and communication technologies are broadly used.

Space

Zemgale is characterised by the balance of nature and human activity, specialisation and sustainable usage of resources. The interaction and partnership of urban and rural areas ensure a high living standard in the whole Zemgale territory. Zemgale, as a region in the centre of Latvia, has strong functional and spatial links with the other regions. In the border territories with Lithuania, there is a favourable environment created for the development of business activities and services.



Objectives and Priorities



Zemgale Planning Region Long-term Development Priorities

- 1. Zemgale** is a region with developed bio economics, agriculture, food industry and craft based on local resources. Zemgale is a “living together” model of intensive agriculture and eco-management.
- 2. Zemgale cities of national and regional significance** – regional industry and service centres, which give a radiance of development to the rural territories.
- 3. Populated Zemgale countryside** – developed small business activities and retained traditional living environment.
- 4. Zemgale is a region of education, science and innovations** with Latvia University of Agriculture as an intellectual potential for the development of Latvia and Zemgale, especially in the rural areas, and with powerful vocational education institutions.





Economic Profile of Zemgale Region

Zemgale economic specialisation

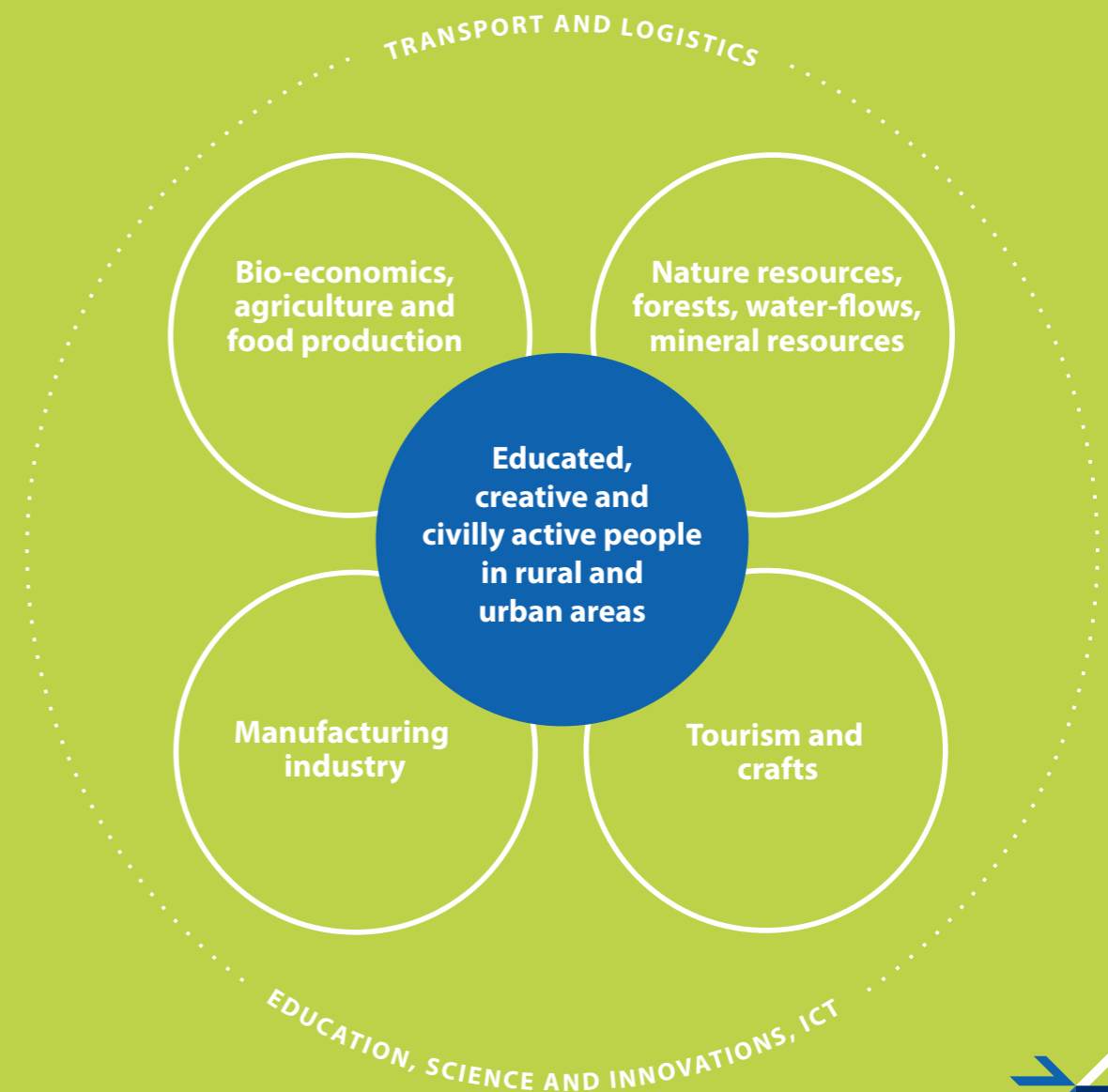
The economic profile of Zemgale Planning Region includes four main directions of specialisations:

1. **Bio economics, agriculture** and processing of its products;
2. **Natural resource** (forests and natural resource) management;
3. **Manufacturing industry** as the specialisation of the urban areas;
4. **Tourism and crafts** as the brand of region identity.

Long-term development of these branches is directed towards the effective and sustainable usage of local resources, as well as towards the increase of innovations and competitiveness, acquiring niches that are more perspective and region-specific. The economic specialisation of the region will contribute to the implementation of long-term development priorities by having a person in the centre of economic development, and with business activities in the perspective branches enhancing the employment of Zemgale's inhabitants and creative activities. There are areas that twist through all specialisation directions to ensure a stable and innovative growth of economic branches:

- **transport and logistics** ensuring both people mobility and transporting of resources and products, including sales and export possibilities;
- **education, science**, innovations, and information and communications technologies (ICT) are to be developed in close connection with economics, ensuring the necessary specialists, innovative solutions of products and technologies.

Specialisation Directions and Horizontal Areas of Zemgale



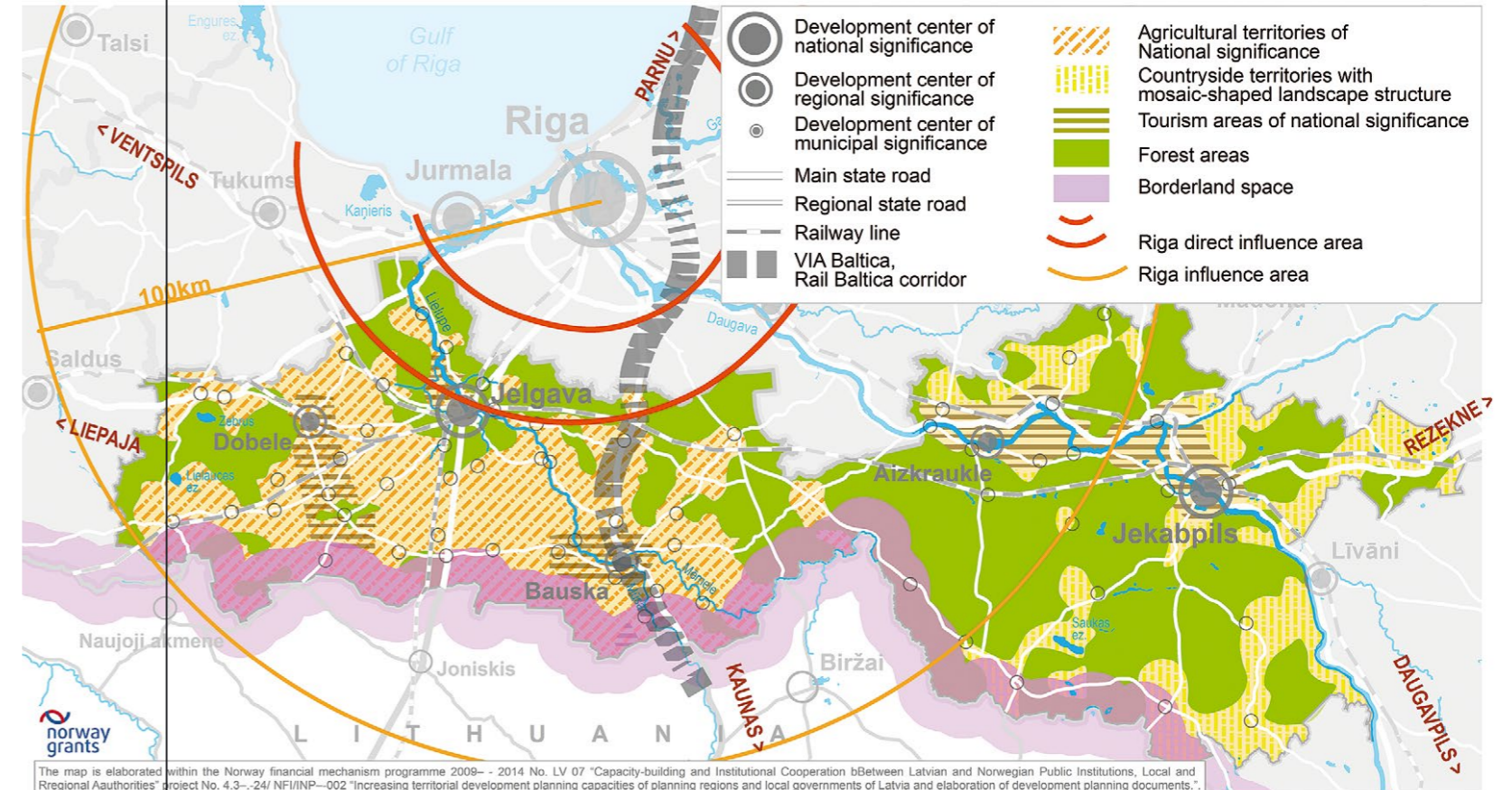


Spatial Development Perspective

Specialisation directions and horizontal areas of Zemgale

Zemgale is formed by agricultural and rural territories of national significance with a mosaic-shaped landscape structure. In Zemgale, there is an intensive, developed agriculture; an open landscape with arable land dominates the territory. In the region's eastern rural territories, agriculture lands interchange with forest territories, which is defined by relief, development of biological agriculture and the role of harvesting and wood-processing in the economic development of the territory. There are also stable tourism areas developed in the region, where different kinds of tourism objects are concentrated, supplementing each other.

In accordance with the set long-term priorities, Zemgale Region is developing as a favourable living space for inhabitants working in the capital city, and is a competitive place for business activity development because of an available and appropriate infrastructure, labour force, supportive environment for business activities, possibilities of product sales. The main Zemgale transport corridors – region development axes – draw an explicit trend into the direction of Rīga. According with the development axes, transport infrastructure and public transport services also have to be developed.





The Structure of the Distribution of Population and Development Centres

Development centres are the mainspring for regional development

The following levels of development centres are defined in Zemgale Region:

- **development centres of national significance – Jelgava, Jēkabpils;**
- **development centres of regional significance – Dobele, Bauska, Aizkraukle;**
- **development centres of municipal significance –** Aknīste, Auce, Bēne, Ceraukste, Code, Dāviņi, Mežotne, Uzvara, Vecsaule, Rītausmas, Ērgļi, Biksti, Jaunbērze, Kaķenieki, Krimūnas, Naudīte, Penkule, Iecava, Daudzeva, Jaunjelgava, Sece, Sērene, Staburags, Sunākste, Rubeņi, Zasa, Eleja, Kalnciems, Lielplatone, Līvberze, Nākotne, Platone, Sesava, Staļģene, Svēte, Valgunde, Vilce, Vircava, Zaļenieki, Irši, Vecbebri, Koknese, Zilāni, Nereta, Ērberģe, Sproģi, Garoza, Ozolnieki, Emburģa, Āne, Pļaviņas, Pilsrundāle, Sala, Skrīveri, Augstkalne, Kronauce, Tērvete, Vecumnieki, Viesīte.

Development centres of local significance are defined by local governments in their own documents.

To ensure equivalent living and working conditions for inhabitants and to reinforce the state polycentric structure of the distribution of the population, it is necessary to:

- **increase the potential and competitiveness of the development centres** by forming an attractive urban environment for inhabitants and investors;
- **cooperate and mutually interact between urban and rural territories** for the provision of workplaces and rendering of services;
- **form the functional network of the populated areas by creating the critical mass** necessary for the development, not from concentration of resources but by connecting resources of both different territories (urban and rural) and different branches with the infrastructure of transport and information technologies.



Jelgava City Council, Lielā iela 11, 63005522, www.jelgava.lv
Jēkabpils City Council, Brīvības iela 120, 65232335, vpa@jekabpils.lv, www.jekabpils.lv
Aizkraukle Local Government, Lāčplēša iela 1A, 65133930, dome@aizkraukle.lv, www.aizkraukle.lv
Aknīste Local Government, Skolas iela 7, 65237750, akniste@akniste.lv, www.akniste.lv
Auce Local Government, Jelgavas iela 1, 63745141, dome@dome.auce.lv, www.auce.lv
Bauska Local Government, Uzvaras iela 1, 63922231, dome@bauska.lv, www.bauska.lv
Dobele Local Government, Brīvības iela 17, 63720940, dome@dobele.lv, www.dobele.lv
Iecava Local Government, Skolas iela 4, 63941301, dome@iecava.lv, www.iecava.lv
Jaunjelgava Local Government, Lāčplēša iela 11, 65133656, dome@jaunjelgava.lv, www.jaunjelgava.lv
Jēkabpils Local Government, Rīgas iela 150A, 65220730, novads@jekabpilsnovads.lv, www.jekabpilsnovads.lv
Jelgava Local Government, Pasta iela 37, 63022238, dome@jelgavasnovads.lv, www.jelgavasnovads.lv
Koknese Local Government, Melioratoru iela 1, 65133630, dome@koknese.lv, www.koknese.lv
Krustpils Local Government, Rīgas iela 150A, 65237635, novads@krustpils.lv, www.krustpils.lv
Nereta Local Government, Rīgas iela 1, 65176166, dome@neretasnovads.lv, www.neretasnovads.lv
Ozolnieki Local Government, Stadiona iela 10, 63084721, ozolnieki@ozolnieki.lv, www.ozolnieki.lv
Pļaviņas Local Government, Dzelzceļa iela 11, 65133054, dome@plavinas.lv, www.plavinas.lv
Rundāle Local Government, Pilsrundāle 1, 63962298, dome@rundale.lv, www.rundale.lv
Sala Local Government, Susejas iela 9, 65237700, salaspag@salas.lv, www.salasnovads.lv
Skrīveri Local Government, Daugavas iela 59, 65197675, dome@skriveri.lv, www.skriveri.lv
Tērvete Local Government, "Zelmēni", 63726012, tervetesnd@zemgale.lv, www.tervetesnov.lv
Vecumnieki Local Government, Rīgas iela 29, 63976100, vecumnieki@vecumnieki.lv, www.vecumnieki.lv
Viesīte Local Government, Brīvības iela 10, 65245179, dome@viesite.lv, www.viesite.lv
Zemgale Planning Region Administration, zpr@zpr.gov.lv, 63027549



ZEMGALES
PLĀNOŠANAS
REĢIONS

