



VARAM



RĪGAS
PLĀNOŠANAS REĢIONS



RIGA PLANNING REGION SUSTAINABLE DEVELOPMENT STRATEGY 2014-2030 AND DEVELOPMENT PROGRAMME 2014-2020

Rudolfs Cimdins

Riga Planning Region
Head of Spatial Planning Division

Riga 02.10.2014.

Norwegian Financial Mechanism project „Increasing territorial development planning capacities of planning regions and local governments of Latvia and elaboration of development planning documents” (Nr.4.3.-24/NFI/INP-002)



RIGA REGION - TODAY



Area	10 437 km ²	GDP	11 690 EUR/per capita
Population	1,1 million	Population (+/-)	-1,0 % (2008-2013)
Coastline	185 km	Density	105 inh./km ²
Municipalities	30	Agglomeration	165 inh./km ²
Major cities	Riga, Jurmala	Average salary	785 EUR
Regional centers	Tukums, Ogre, Sigulda, Limbazi	Income tax	554 EUR/inh.



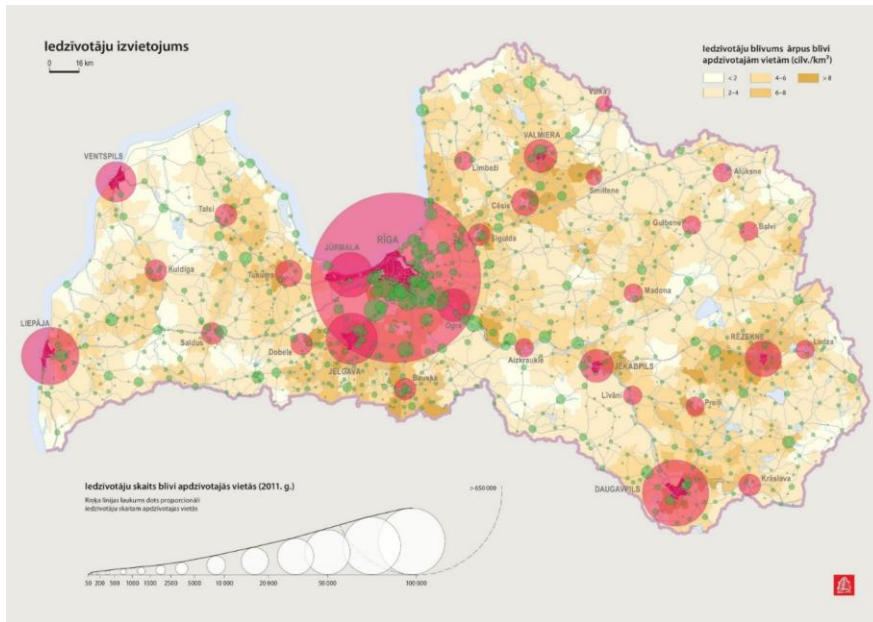
VARAM



RĪGAS
PLĀNOŠANAS REĢIONS



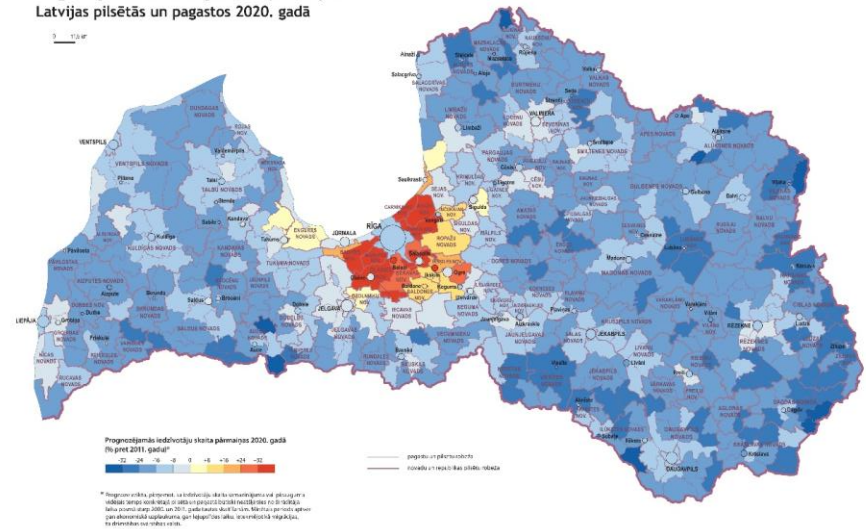
RIGA REGION – TODAY AND AFTER 5-7 YEARS



RIGA & AGGLOMERATION ...

- ... ADMINISTRATIVE REGION
- ... URBAN FUNCTIONAL AREA
- ... 'GREATER RIGA' ???
- ... RIGA CITY REGION ???

Prognozējamās iedzīvotāju skaita pārmaiņas Latvijas pilsētās un pagastos 2020. gadā



POPULATION CHANGE

- +/- 0% IN REGION
- 10% RIGA CITY
- + 15% AGGLOMERATION



RĪGAS
PLĀNOŠANAS REĢIONS



FRAMEWORK OF PLANNING DOCUMENTS

ANALYSIS OF THE CURRENT SITUATION

SUSTAINABLE DEVELOPMENT
STRATEGY
2014-2030

DEVELOPMENT
PROGRAM
2014-2020

REPORT ON THE ELABORATION OF PLANNING DOCUMENTS

RIGA REGION – VISION AND OVERALL OBJECTIVE

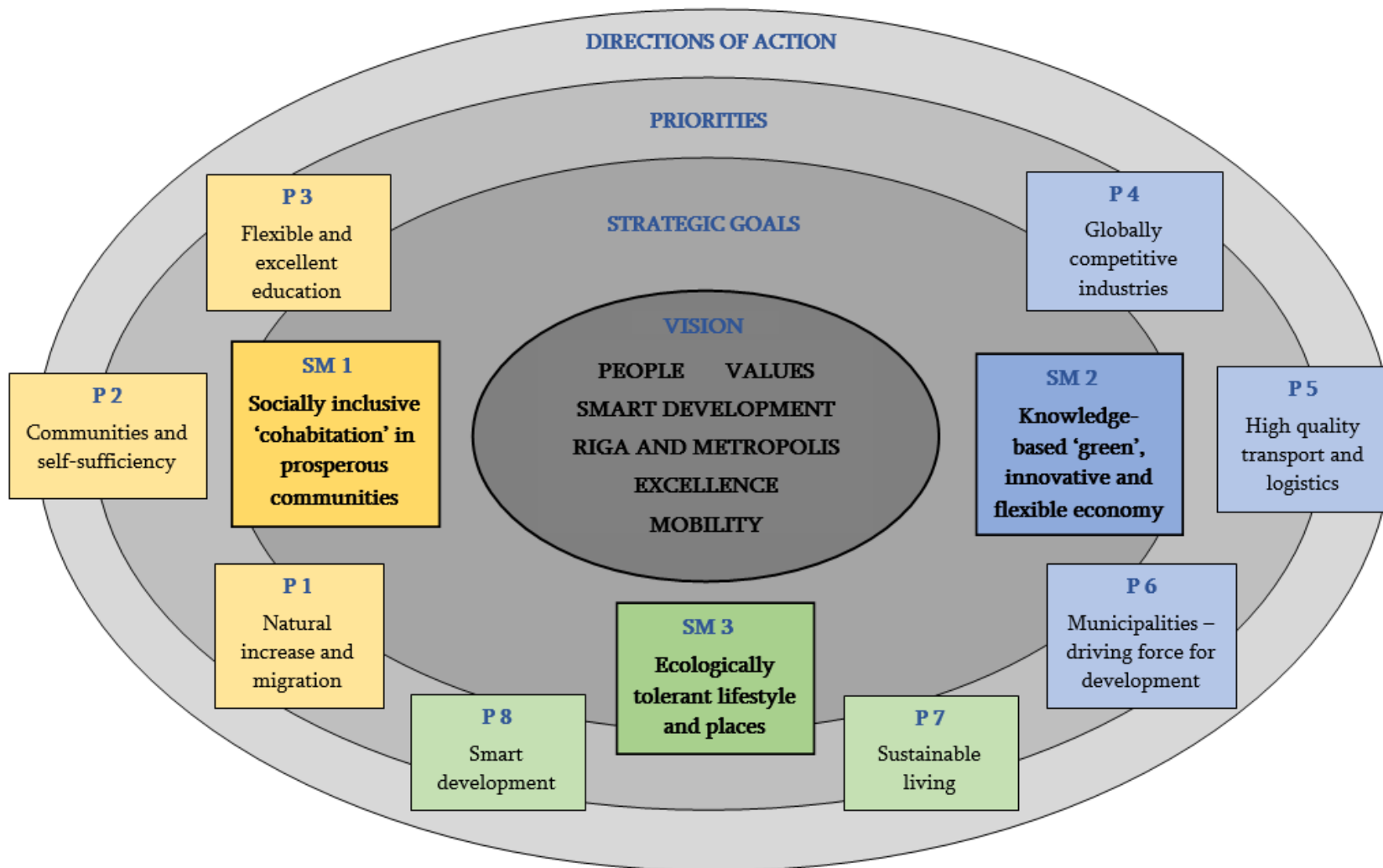
Quality in all spheres of life - becoming humanly attractive,
effective, open-minded and tolerant - competitive in the global arena

- Human life and social environment
- Economic activities and products
- Physical space quality

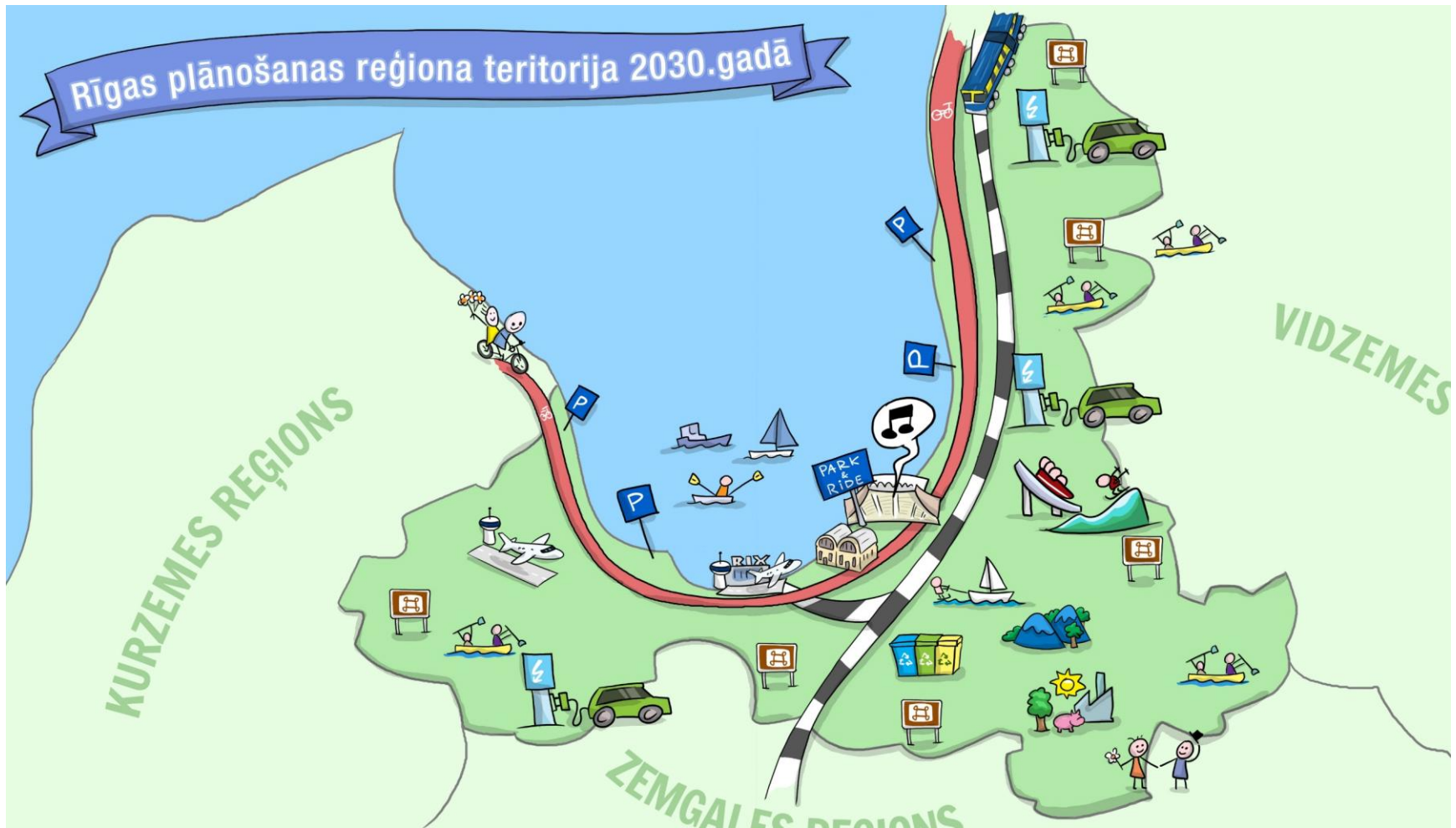
Development pillars / drivers

- Targeted collaborative process
- Riga with metropolis
- Significant agents (stakeholders) of the strategy implementation
- Excellent companies and institutions, education and research

STRATEGIC FRAMEWORK



STRATEGIC PROJECTS



PRIORITIES

2014-2030 = 2014-2020

- Natural increase and migration
- Communities and self-sufficiency
- Flexible and excellent education
- Globally competitive industries
- High quality transport and logistics
- Municipalities – driving force for development
- Sustainable living
- Smart development

PRIORITY 1

Actions

(keywords)

FERTILITY PROMOTION
STRATEGIES

IMMIGRATION POLICY

QUALIFIED WORKFORCE

NATURAL INCREASE AND MIGRATION



PRIORITY 2

Actions

(keywords)

SOCIAL PLANNING

LOCAL INITIATIVES

TERRITORIAL
COMMUNITIES

SOCIAL AND ENERGY
SELF-SUFFICIENCY

COMMUNITIES AND SELF-SUFFICIENCY



PRIORITY 3

Actions

(keywords)

INFRASTRUCTURE FOR
PHYSICAL ACTIVITIES

PROFESSIONAL
EDUCATION AND
LIFELONG LEARNING

INNOVATIVE BUSINESS,
EXCELLENT RESEARCH
AND HIGHER EDUCATION
LINKAGE

FLEXIBLE AND EXCELLENT EDUCATION



PRIORITY 4

Actions

(keywords)

SUPPORT FOR KNOWLEDGE
AND TECHNOLOGY
EXPORT

NICHE PRODUCTS WITH
INTERNATIONAL
ATTENTION

CULTURE AND CREATIVE
INDUSTRIES

TOURISM AND MARKETING
STRATEGIES

GLOBALLY COMPETITIVE INDUSTRIES



PRIORITY 5

Actions

(keywords)

INTEGRATED PUBLIC
TRANSPORT NETWORK

CONNECTIONS WITH
INTERNATIONAL
IMPORTANCE

COASTAL AND INLAND
WATERWAYS

URBAN LIGHT TRANSPORT

CYCLING

HIGH QUALITY TRANSPORT AND LOGISTICS



PRIORITY 6

Actions

(keywords)

RESPONSIBILITY AND
FINANCIAL SELF-
SUFFICIENCY

SPECIALIZED AND
DIVERSE TERRITORIES

ROLE OF DIFFERENT
DEVELOPMENT ACTORS

SUSTAINABLE AND
EFFECTIVE
SERVICE SYSTEMS

MUNICIPALITIES - DRIVING FORCE FOR DEVELOPMENT



PRIORITY 7

Actions

(keywords)

MAINTAINING BALANCE
OF SPATIAL STRUCTURE

URBAN GROWTH
MANAGEMENT AND
REGENERATION

ENERGY SYSTEMS BASED
ON RENEWABLE
RESOURCES

HOUSING AND PUBLIC
SPACE NETWORK
(NEEDS-BASED)

SUSTAINABLE LIVING



PRIORITY 8

Actions

(keywords)

SPECIALIZATION
OF RIGA REGION

SMART ...

Economy (competitiveness)

People (social capital)

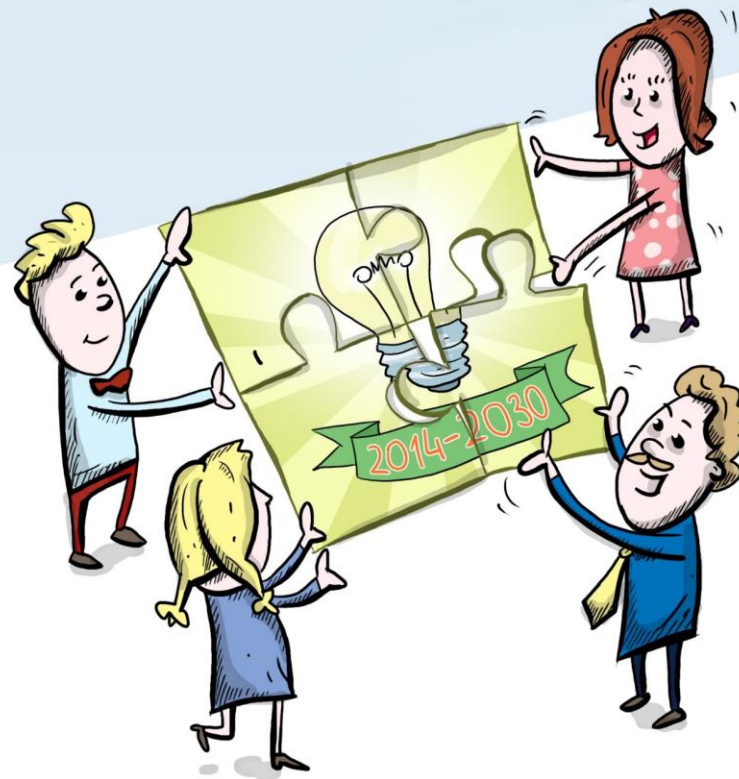
Governance (participation)

Mobility (transport & ICT)

Environment (resources)

Living (life quality)

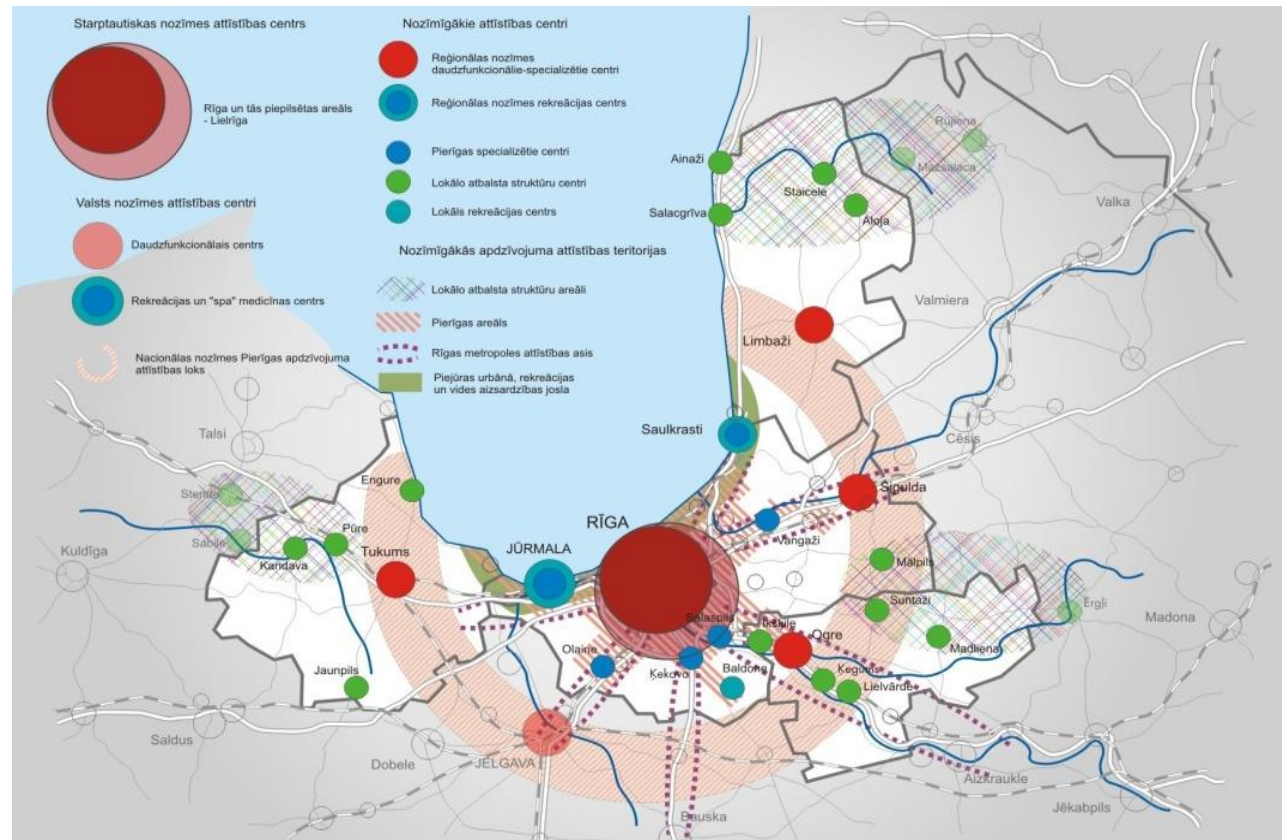
SMART DEVELOPMENT



SPATIAL DEVELOPMENT - STRUCTURE

SPECIALIZATION OF TERRITORIES

PROFILED DEVELOPMENT CENTERS



RIGA METROPOLIS

COASTLINE

RURAL AREAS

SPECIFIC

TERRITORIES

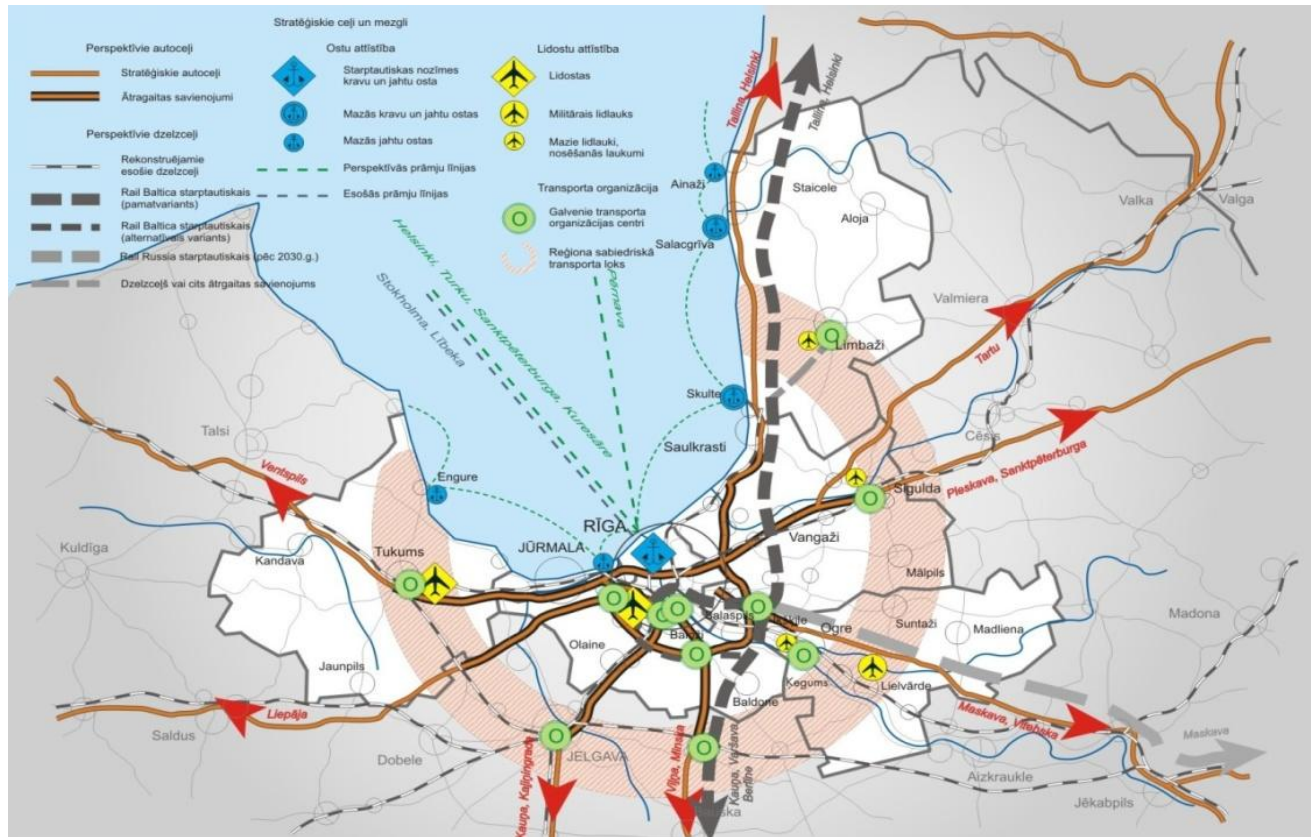
SPATIAL DEVELOPMENT - MOBILITY

N-S AND E-W CONNECTIONS

DIFFERENTIATED PUBLIC TRANSPORT SYSTEM

TIME
MINIMIZATION
QUALITY

HUBS

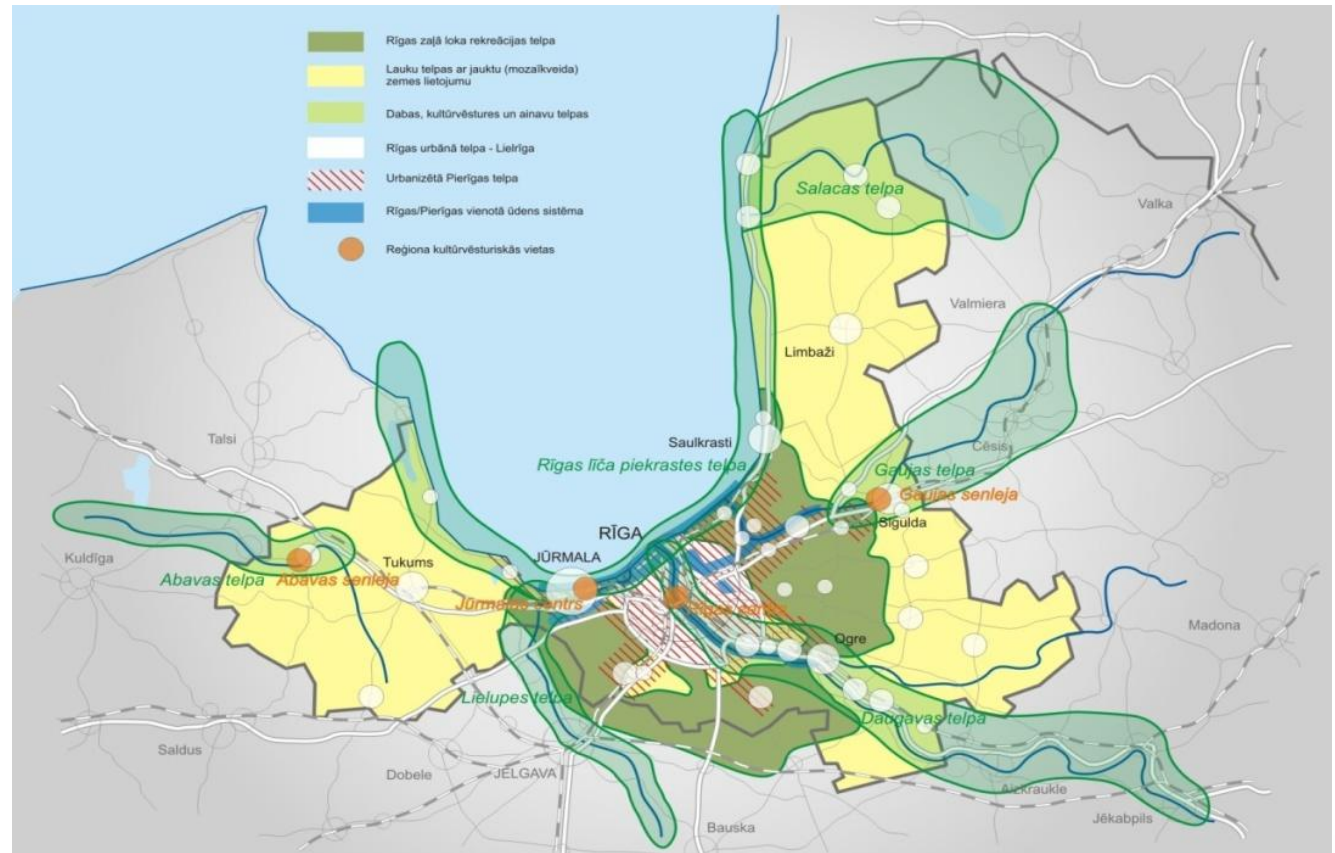


SPATIAL DEVELOPMENT - LANDSCAPES

COASTAL AREAS

VALLEY AREAS

URBAN
RURAL
'RURBAN'



ACTIVE PUBLIC HEARING PROCESS

RPR Sustainable development strategy 2014-2030
and Development program 2014-2020
public hearing period

15th September - 31st October 2014



VARAM



RĪGAS
PLĀNOŠANAS REĢIONS



AVAILABILITY OF RPR PLANNING DOCUMENTS

RPR internet web site

<http://www.rpr.gov.lv/pub/index.php?id=35>



VARAM



RĪGAS
PLĀNOŠANAS REĢIONS



THANK YOU !

RIGA PLANNING REGION

www.rpr.gov.lv

Rudolfs Cimdins

rudolfs.cimdins@rpr.gov.lv



VARAM



RĪGAS
PLĀNOŠANAS REĢIONS

