



RECENT CLIMATE CHANGE IN LATVIA

ZANITA AVOTNIECE (zanita.avotniece@lvgmc.lv)
SVETLANA ANISKEVIČA (svetlana.aniskevica@lvgmc.lv)

LATVIAN ENVIRONMENT, GEOLOGY AND METEOROLOGY CENTRE
FORECASTING AND CLIMATE DEPARTMENT
CLIMATE AND METHODOLOGICAL DIVISION

19.05.2016

QUALITY CONTROL OF ARCHIVED OBSERVATION DATA



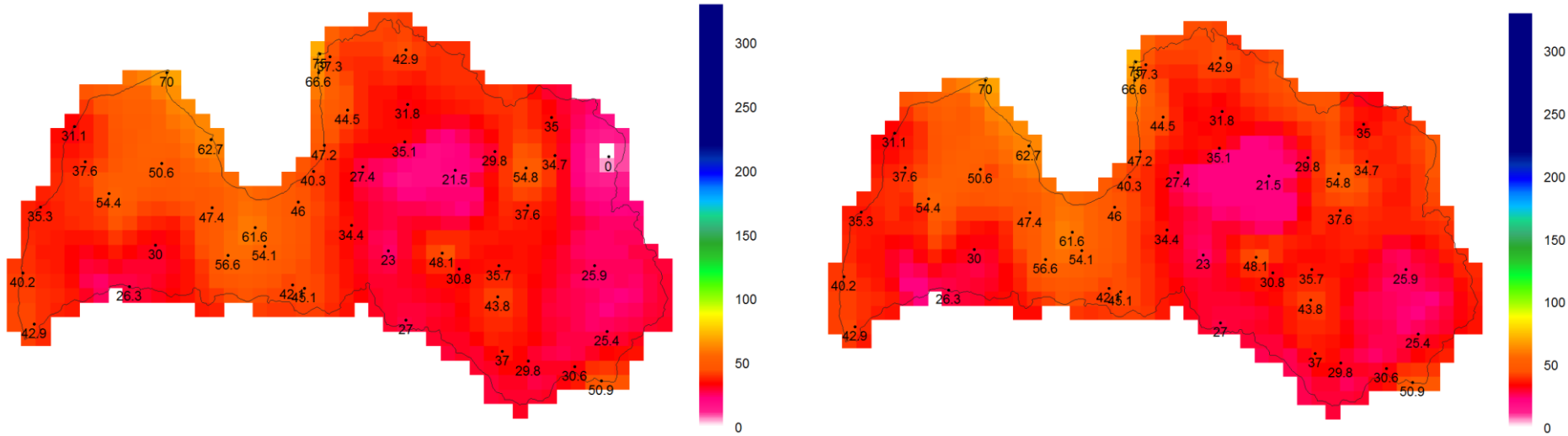
Archived observation data have been put under extensive quality control performed on different levels of the analysis:

1. Initial manual quality control of the data performed by in-house experts
2. Data homogenization for the data series containing meteorologically unexplainable shifts or jumps
3. Final data quality control and bias assessment of the interpolated values against E-OBS gridded observation dataset performed by the experts from the FMI

QUALITY CONTROL: 1. Initial QC and blacklisting



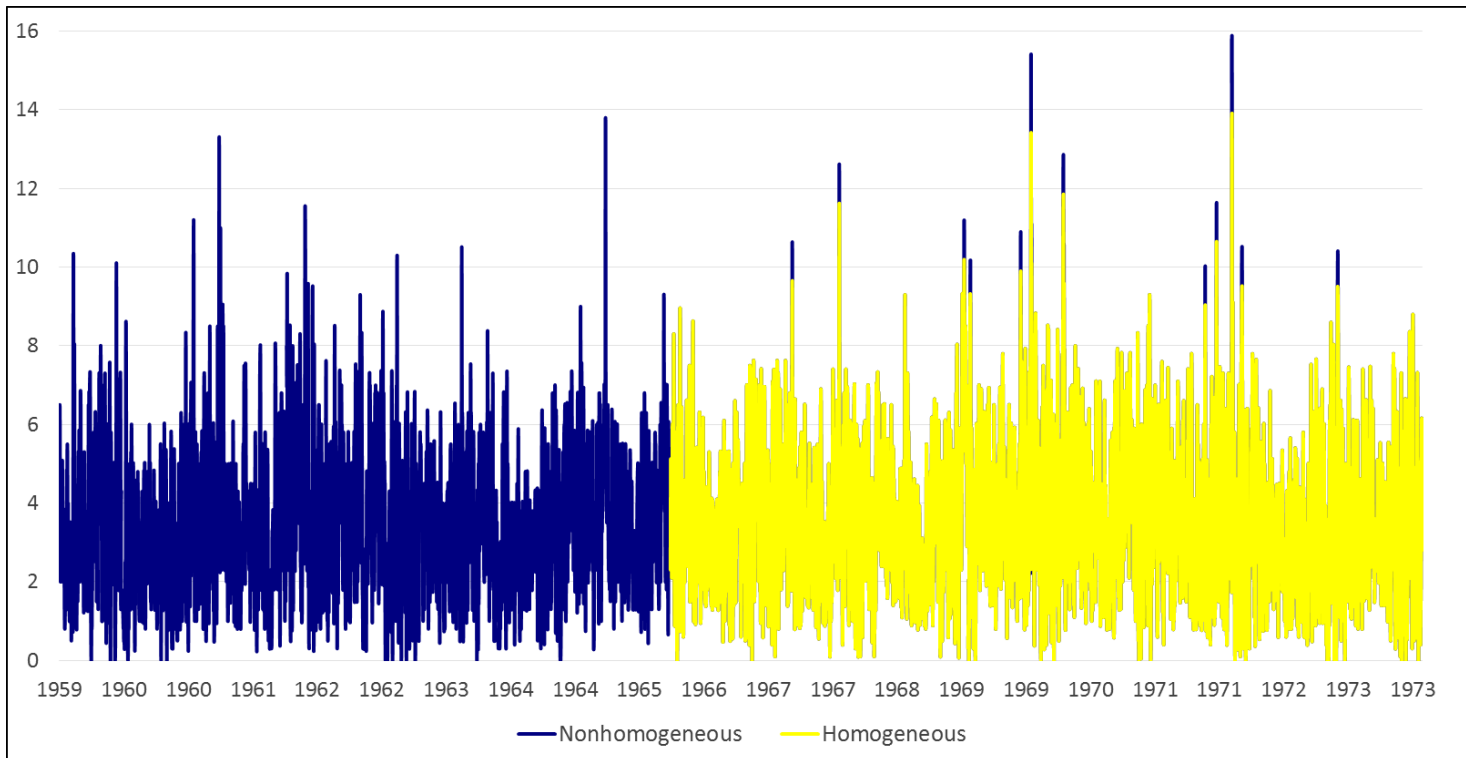
During data extraction from the electronic observation archive database several issues with data quality have been detected and corrected for



QUALITY CONTROL: 2. Data homogenization



Due to changes in observation methods and instruments over time, shifts and jumps in wind speed observation data have been detected → a simple homogenization of the data series has been performed



QUALITY CONTROL: 3. Comparison to the E-OBS dataset



The corrected and homogenized data have been compared to the E-OBS gridded observation dataset for Europe.

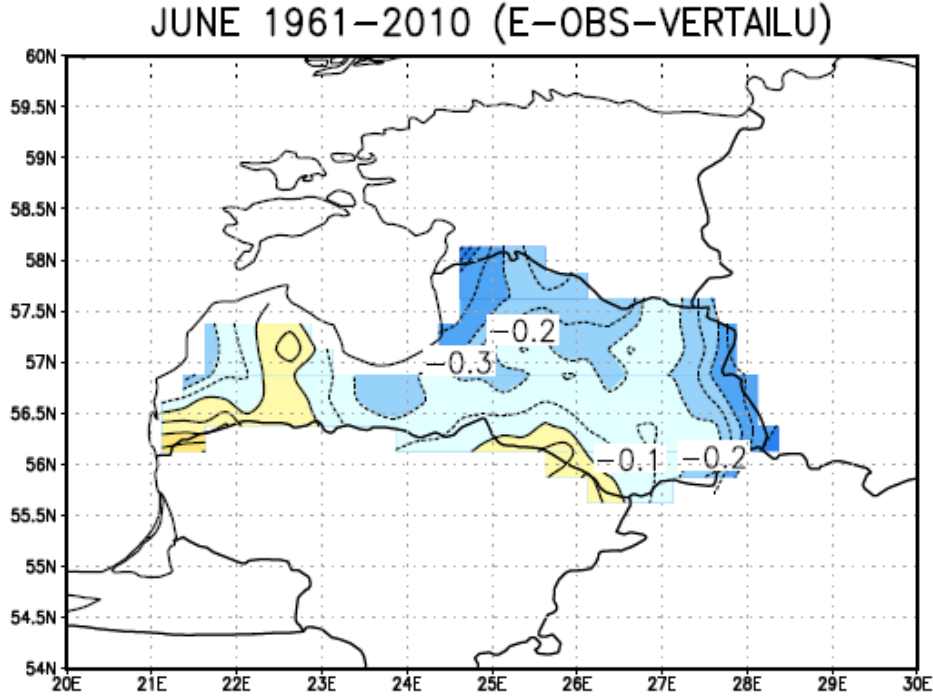
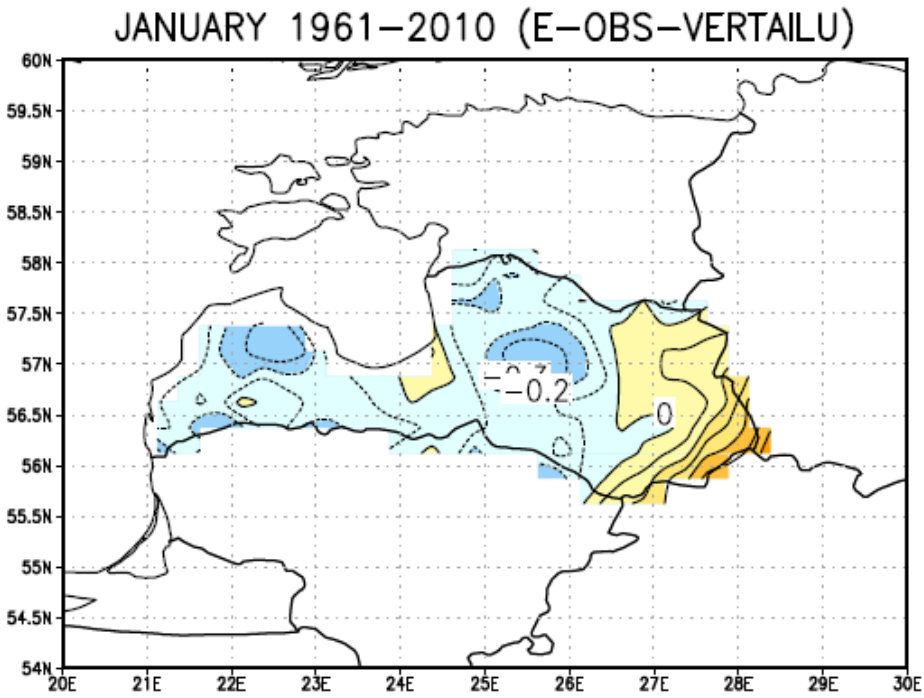
Main conclusions from the comparison of temperature parameters:

- The differences are generally quite gentle, of the order of magnitude of 0-0.3 °C. The analyses are generally of a good quality.
- More geographical details can be seen from LEGMC data, which is due to the larger number of observations utilized.



QUALITY CONTROL: 3. Comparison to the E-OBS dataset

Larger differences occurring near the eastern boundary of the country might be artefacts: in winter the values are by 0.5 °C warmer than the E-OBS estimates, but in summer negative anomalies of a similar magnitude can be observed.



CLIMATE INDICES



For the assessment of extreme climate events and their changes under the conditions of recent climate change, several climate indices following the recommendations of ECA&D have been calculated from the daily observation data

- 20 temperature indices
- 10 precipitation indices
- 12 wind indices

CLIMATE INDICES



Temperature indices		Precipitation indices		Wind indices	
FD	Frost days	RX1day	Maximum 1-day precipitation amount	FG	Annual mean wind speed
SU	Summer days	RX5day	Maximum 5-day precipitation amount	FGCalm	Number of days with calm winds
ID	Ice days	SDII	Simplified daily intensity index	FG6Bft	Number of days with strong winds
TR	Tropical nights	R10	Number of days with heavy precipitation	FXx	Annual maximum wind gusts
GSL	Growing season length	R20	Number of days with very heavy precipitation	DDnorth	Number of days with prevailing northerly winds
TN10p	Cold nights	CDD	Number of consecutive dry days	DDsouth	Number of days with prevailing southerly winds
TX10p	Cold day-times	CWD	Number of consecutive days with precipitation	DDwest	Number of days with prevailing westerly winds
TG10p	Cold days	R95p	Very wet days	DDeast	Number of days with prevailing easterly winds
TN90p	Warm nights	R99p	Extremely wet days	DMnorth	Number of days with maximum wind speed observed with northerly direction winds
TX90p	Warm day-times	PRCPTOT	Total annual precipitation on wet days	DMsouth	Number of days with maximum wind speed observed with southerly direction winds
TG90p	Warm days			DMwest	Number of days with maximum wind speed observed with westerly direction winds
TGn	Minimum of the daily mean temperature			DMeast	Number of days with maximum wind speed observed with easterly direction winds
TGx	Maximum of the daily mean temperature				
TNn	Minimum of the daily minimum temperature				
TNx	Maximum of the daily minimum temperature				
TXn	Minimum of the daily maximum temperature				
TXx	Maximum of the daily maximum temperature				
WSDI	Warm-spell duration indicator				
CSDI	Cold-spell duration indicator				
DTR	Diurnal temperature range				

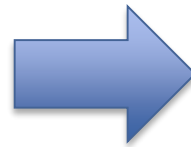
The calculation of indices has been performed by using the RClmDex tool recommended by the ECA&D project team.

Indices have been calculated from quality-checked daily observation data, following a built-in routine of the tool.

BASIC STATISTICAL ANALYSIS



Descriptive statistics and quality control taking into account WMO recommendations:



- Monthly, yearly means, minimums, maximums and sums
- Multi-year monthly and yearly means, minimums and maximums

$$\bar{T}_m = \frac{\sum_{i=1}^n T_{d_i}}{n} \quad \bar{T}_y = \frac{\sum_{i=1}^{12} T_{m_i}}{12}$$

Monthly mean values calculated only if:

- *no more than 10 daily values missing*
- *5 or more consecutive daily values are missing*

Yearly mean values calculated only if:

- *no monthly values missing*

$$\bar{P}_m = \sum_{i=1}^n P_{d_i} \quad \bar{P}_y = \sum_{i=1}^{12} P_{m_i}$$

Monthly and yearly sums calculated only if:

- *no daily values missing*



Detection of trends:

- Mann-Kendall test

$$Z = \begin{cases} \frac{S-1}{\sqrt{Var(S)}} & \text{if } S > 0 \\ 0 & \text{if } S = 0 \\ \frac{S+1}{\sqrt{Var(S)}} & \text{if } S < 0 \end{cases}$$

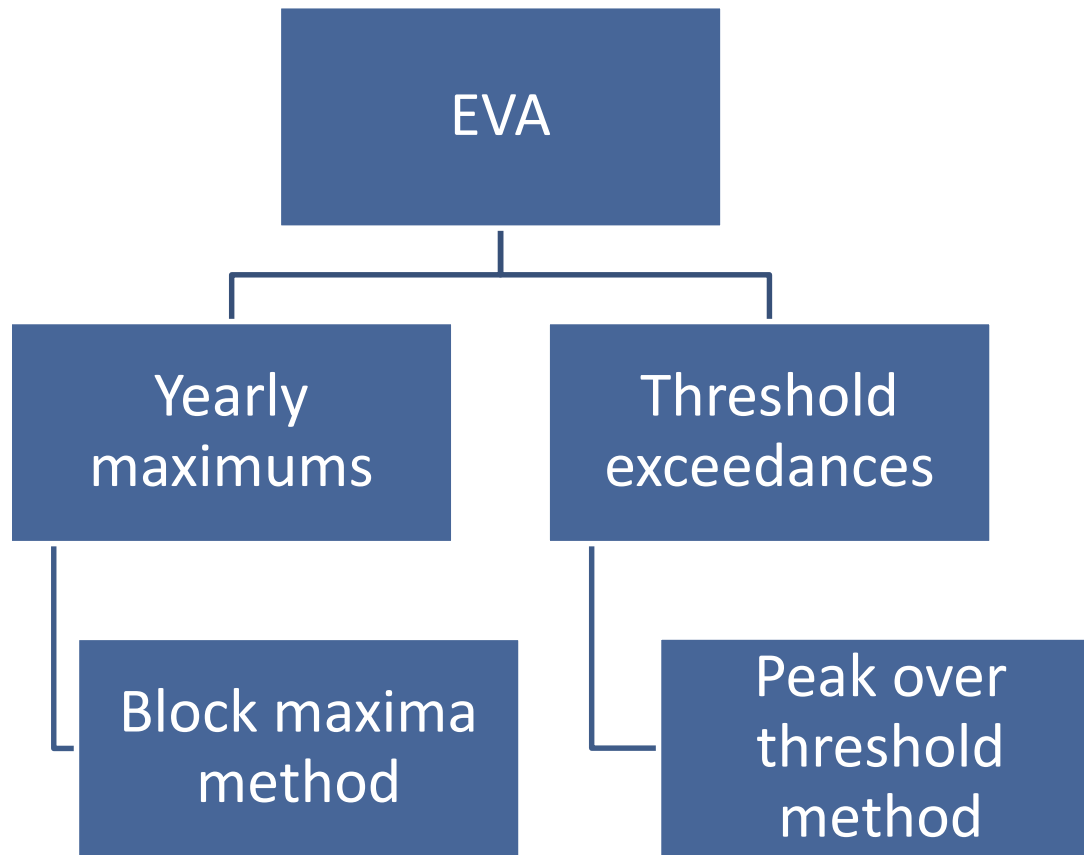
- Linear regression slope estimation

$$b = \frac{\sum_{i=1}^N (x_i - \bar{x})(y_i - \bar{y})}{\sum_{i=1}^N (x_i - \bar{x})^2}$$

- Coefficient of determination

$$R^2 = 1 - \frac{SS_{RES}}{SS_{TOT}}$$

EXTREME VALUE ANALYSIS



EXTREME VALUE ANALYSIS



Block maxima method:

- Generalized extreme value distribution fits the data

$$G(x) = \begin{cases} \exp \left\{ - \left[1 + \xi \left(\frac{x-\mu}{\sigma} \right) \right]^{\frac{-1}{\xi}} \right\} & \text{if } \xi \neq 0 \\ \exp \left\{ - \exp \left[- \left(\frac{x-\mu}{\sigma} \right) \right] \right\} & \text{if } \xi = 0 \end{cases}$$

- Parameters estimation, hypothesis testing
- Return levels – amounts that might be exceeded once in T years

$$x_T = \begin{cases} \mu - \frac{\sigma}{\xi} \left[1 - \left\{ -\log(1 - 1/T) \right\}^{-\xi} \right] & \text{if } \xi \neq 0 \\ \mu - \sigma \log \left\{ -\log(1 - 1/T) \right\} & \text{if } \xi = 0 \end{cases}$$



Peak over threshold method:

- Generalized Pareto distribution fits the data

$$H_{\xi, \sigma}(y) = \begin{cases} 1 - \left(1 + \frac{\xi}{\sigma}y\right)^{-1/\xi} & \text{if } \xi \neq 0 \\ 1 - e^{-\frac{y}{\sigma}} & \text{if } \xi = 0 \end{cases}$$

- Parameters estimation, hypothesis testing
- Return levels – amounts that might be exceeded once in N years

$$x_N = \begin{cases} u + \frac{\sigma}{\xi} \left[(Nn_y \zeta_u)^\xi - 1 \right] & \text{if } \xi \neq 0 \\ u + \sigma \log(Nn_y \zeta_u) & \text{if } \xi = 0 \end{cases}$$

DATA INTERPOLATION



Kriging with external drift

- Spatial dependencies can be expressed as deterministic trend and stochastic component

$$Z(s) = \mu(s) + \varepsilon(s)$$

- Linear trends using explanatory variables

$$Z(x, y, h, c_t) = \beta_0 + \beta_1x + \beta_2y + \beta_3x^2 + \beta_4y^2 + \beta_5xy + \beta_6h + \beta_7c_t$$

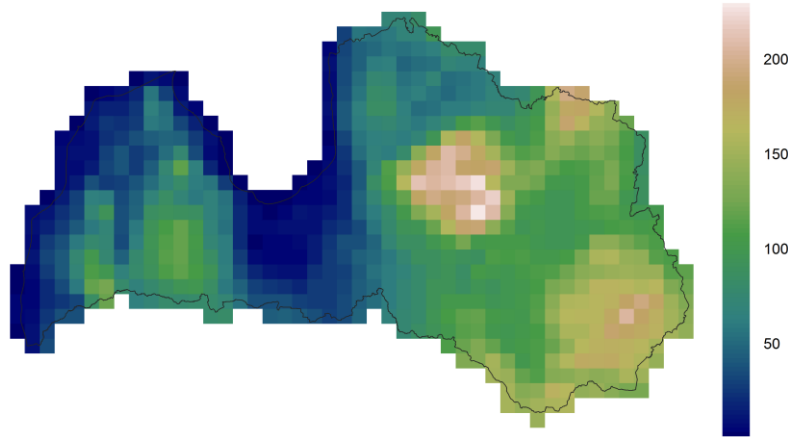
$$Z(x, y, h, c_p) = \beta_0 + \beta_1x + \beta_2y + \beta_3x^2 + \beta_4y^2 + \beta_5xy + \beta_6h + \beta_7c_p$$

$$Z(x, y, h, d) = \beta_0 + \beta_1x + \beta_2y + \beta_3x^2 + \beta_4y^2 + \beta_5xy + \beta_6h + \beta_7d$$

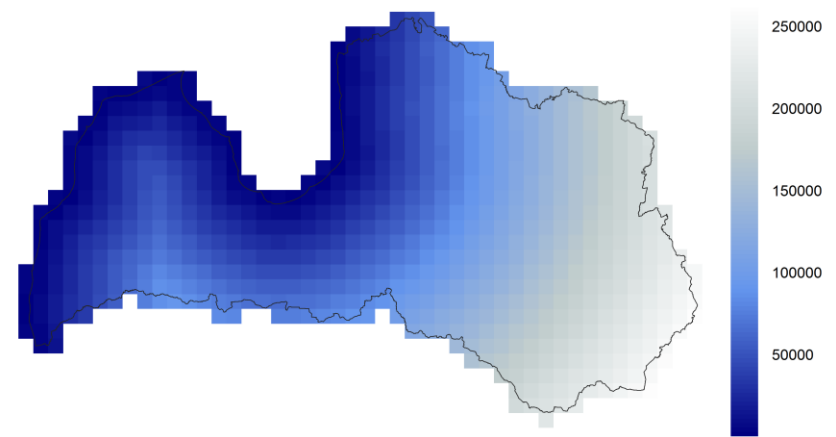
DATA INTERPOLATION



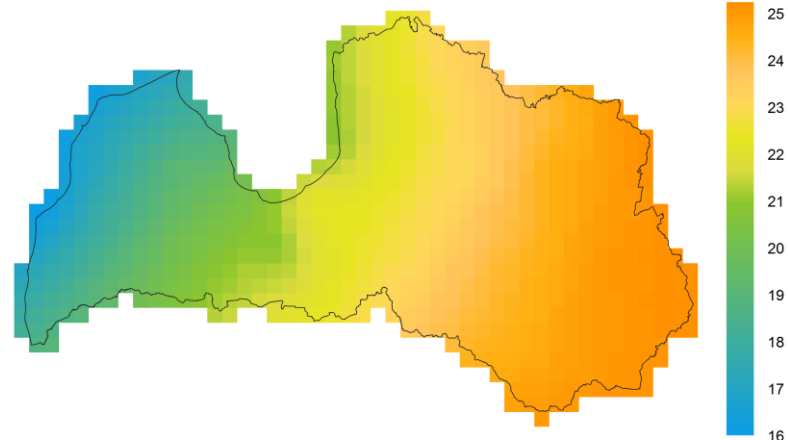
Explanatory variables



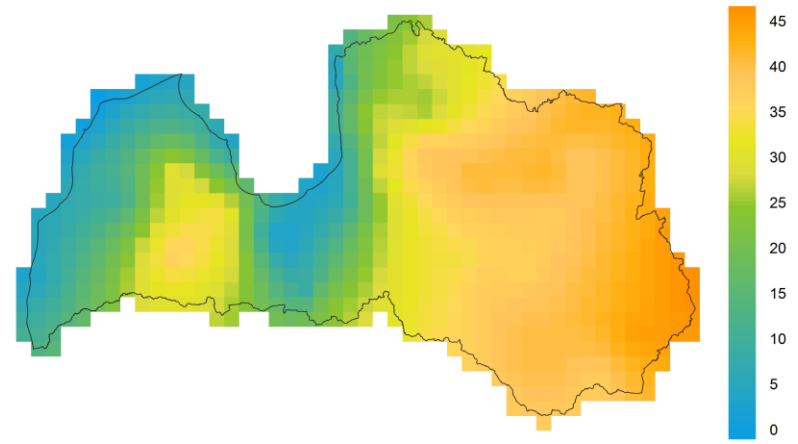
Mean elevation



Distance from the Baltic Sea and the Gulf of Riga



Gorczyński continentality



Gams' continentality

DATA INTERPOLATION



Validation:

- statistical indicators of the differences between predicted values and the values actually observed



	Temperature			Precipitation	Wind	
	Mean	Min	Max	Sum	Mean	Gusts
Mean error	0.00	0.00	0.00	-0.27	0.01	0.02
MAB	0.01	0.04	0.02	7.91	0.05	0.08
RMSE	0.03	0.07	0.04	10.58	0.08	0.12

DATA INTERPOLATION



Output files

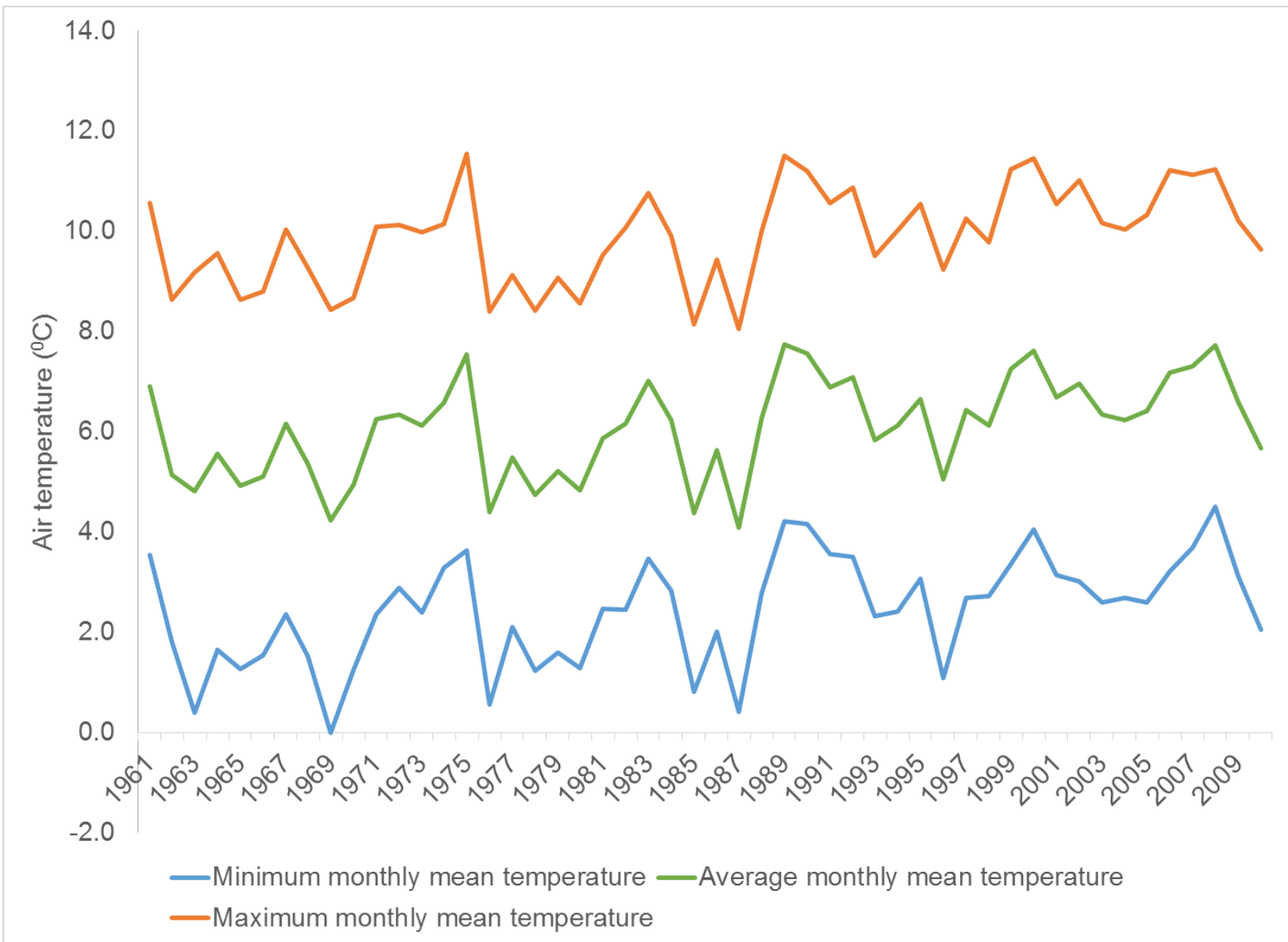
- 739 grid cells
- Cell's coordinates in metric LKS-92 system
- Parameter value

	A	B	C	D	E	F	G	H
1	X,"Y","Predicted"							
2	660740.391985,167558.019882,2							
3	640740.391985,177558.019882,1.7							
4	650740.391985,177558.019882,1.8							
5	660740.391985,177558.019882,1.7							
6	670740.391985,177558.019882,1.7							
7	680740.391985,177558.019882,1.7							
8	640740.391985,187558.019882,1.5							
9	650740.391985,187558.019882,1.6							
10	660740.391985,187558.019882,1.5							
11	670740.391985,187558.019882,1.4							
12	680740.391985,187558.019882,1.4							
13	690740.391985,187558.019882,1.5							
14	700740.391985,187558.019882,1.5							
15	710740.391985,187558.019882,1.6							
16	720740.391985,187558.019882,1.7							
17	730740.391985,187558.019882,1.7							
18	630740.391985,197558.019882,1.4							
19	640740.391985,197558.019882,1.4							
20	650740.391985,197558.019882,1.5							
21	660740.391985,197558.019882,1.5							
22	670740.391985,197558.019882,1.3							
23	680740.391985,197558.019882,1.4							
24	690740.391985,197558.019882,1.3							
25	700740.391985,197558.019882,1.4							



RECENT CLIMATE CHANGE IN LATVIA

AIR TEMPERATURE



OBSERVED TRENDS IN TEMPERATURE VARIABLES

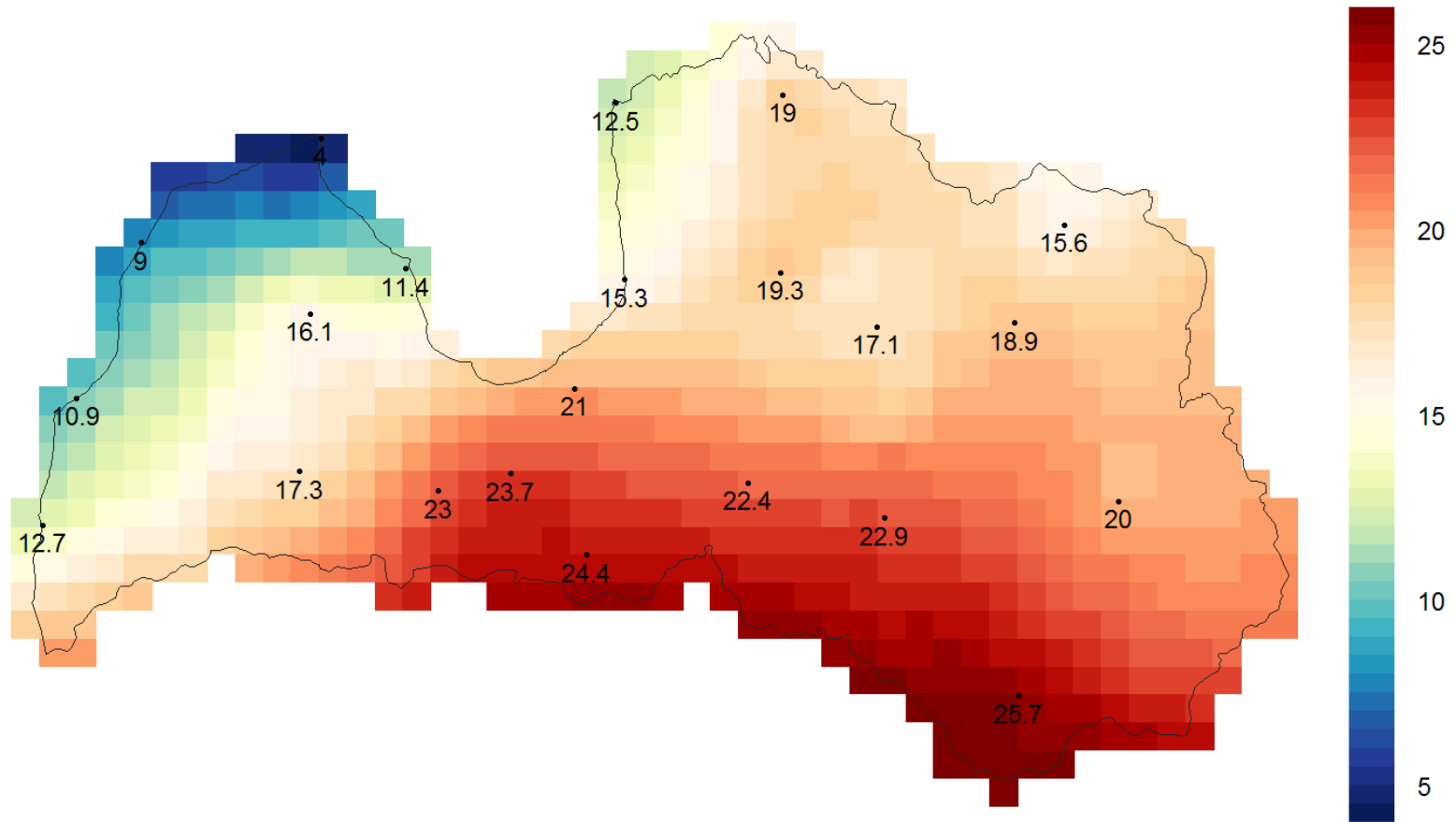


Index or variable	MK test statistics	Index name	MK test statistics	Index name	MK test statistics
TNmean	3.22	TGmean	3.48	TXmean	3.35
TNn	1.33	TGn	1.29	TXn	1.13
TNx	2.87	TGx	1.58	TXx	1.61
FD	-2.38	DTR	0.07	SU	1.56
ID	-2.21	GSL	0.45	TR	2.48
CSDI	-2.25			WSDI	2.92

- Very significant tendency of increase (Mann-Kendall test statistics ≥ 3.3)
- Significant tendency of increase (Mann-Kendall test statistics ≥ 2.6)
- Substantial tendency of increase (Mann-Kendall test statistics ≥ 1.6)

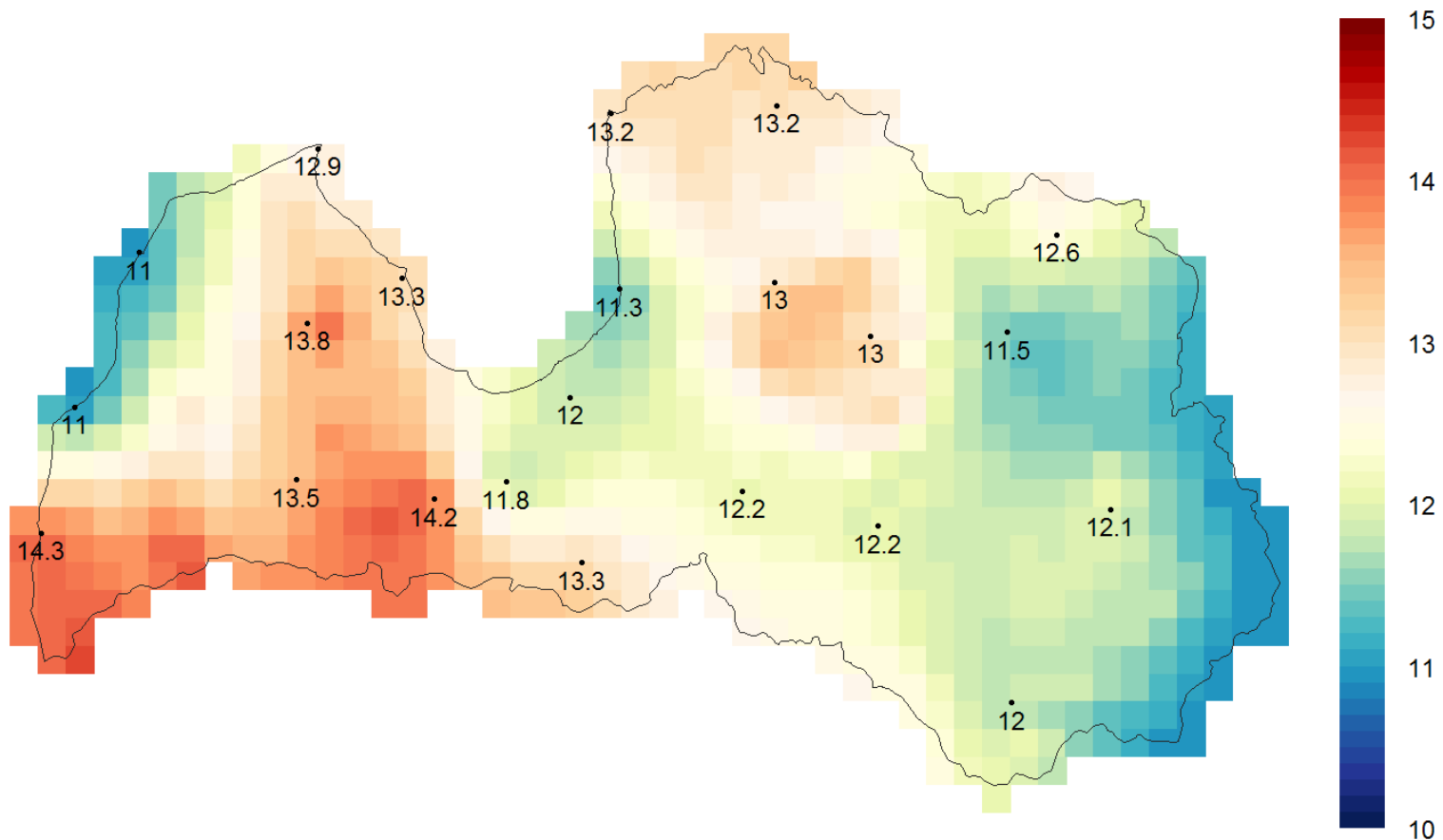
- Very significant tendency of decrease (Mann-Kendall test statistics ≤ -3.3)
- Significant tendency of decrease (Mann-Kendall test statistics ≤ -2.6)
- Substantial tendency of decrease (Mann-Kendall test statistics ≤ -1.6)

SUMMER DAYS



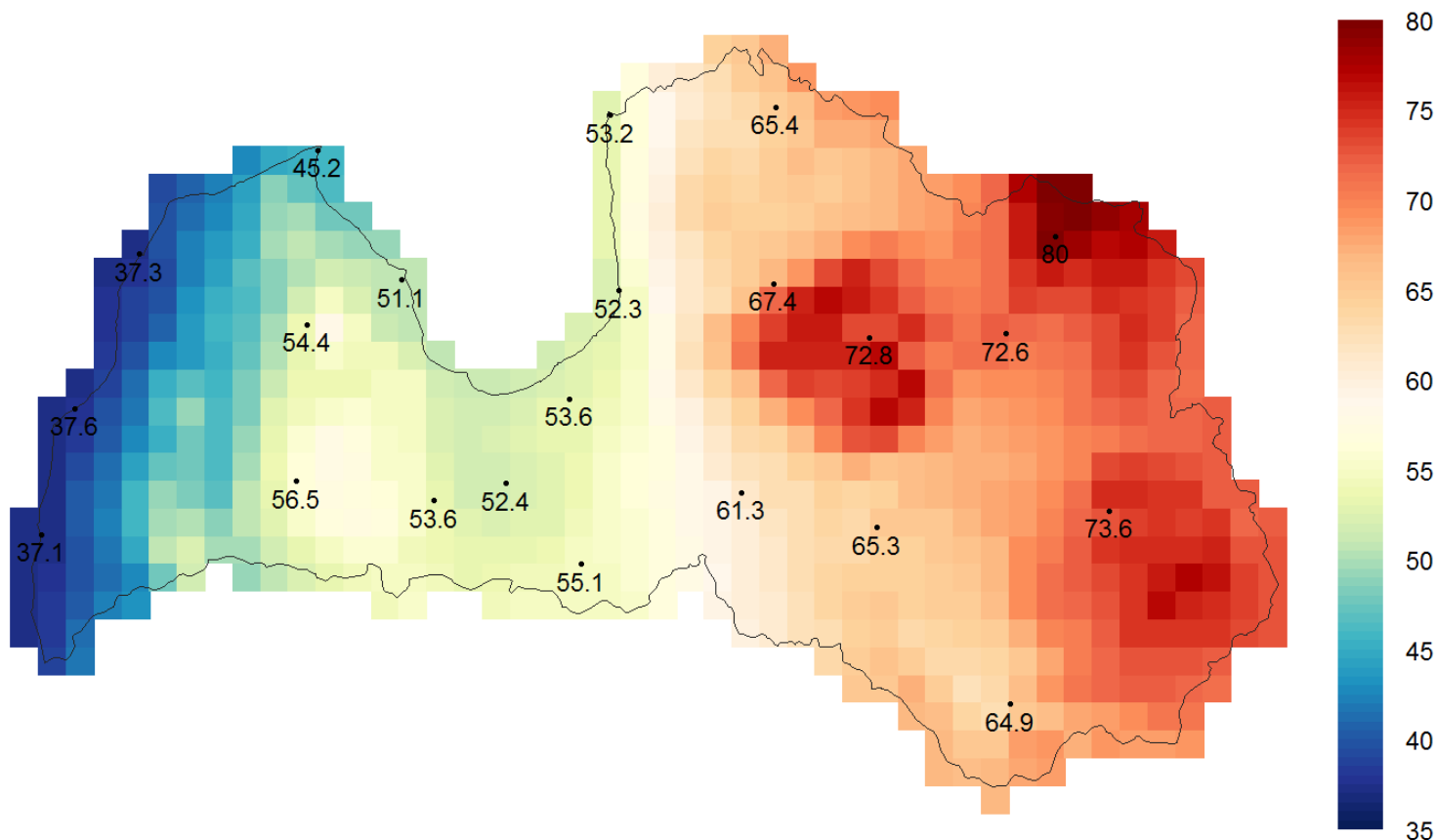
Mean number of summer days (maximum air temperature > +25°C) over the period 1961-2010

WARM SPELL DURATION



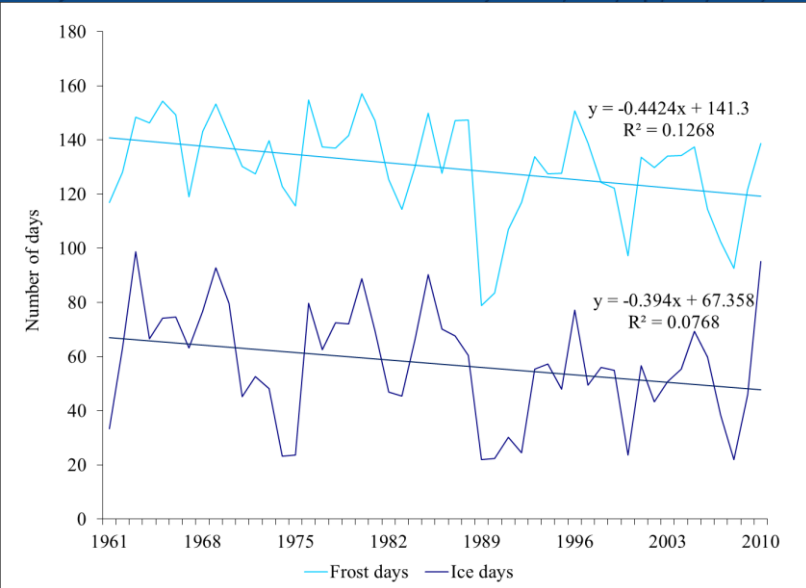
Mean length of the observed warm spells (at least 6 consecutive days with maximum temperature above the 90th percentile of the reference period) over the period 1961-2010

ICE DAYS

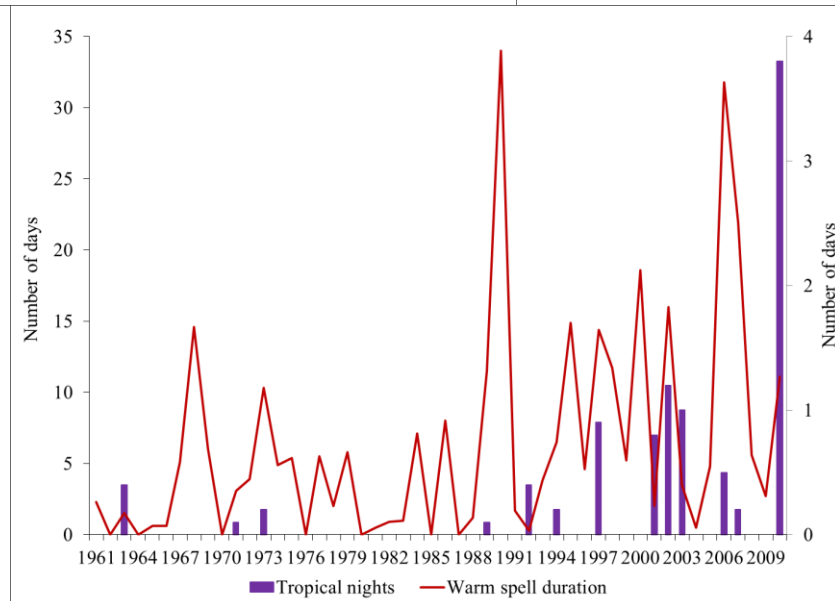


Mean number of ice days (maximum air temperature < 0°C) over the period 1961-2010

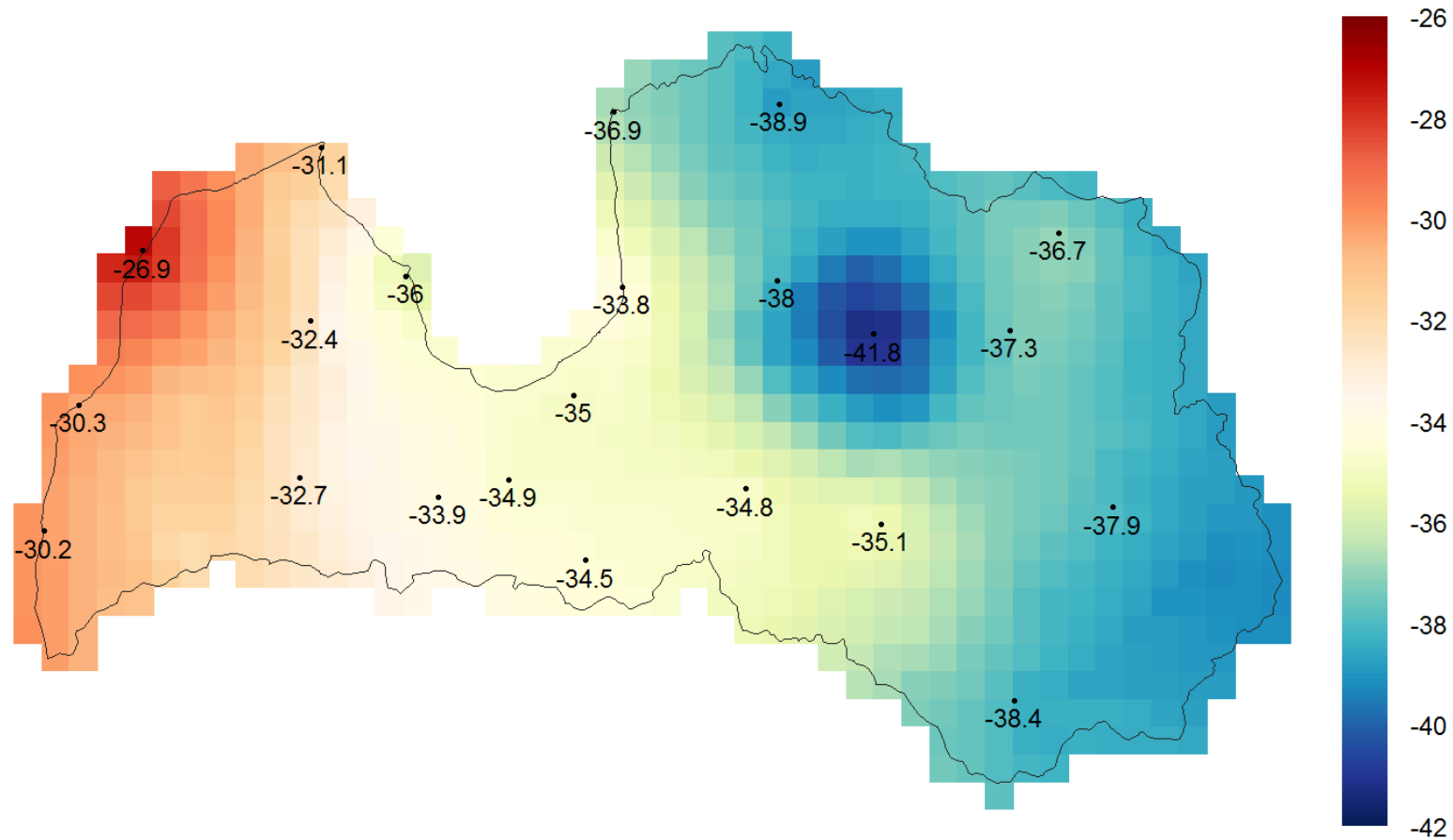
OBSERVED TRENDS IN TEMPERATURE VARIABLES



Observation station	Frost days	Ice days	Tropical nights	Warm spell duration
Ainazi	-1.64	-1.83	2.53	1.24
Aluksne	-3.24	-2.14	1.73	2.8
Bauska	-2.2	-2.02	2.35	0.25
Daugavpils	-1.81	-1.87	2.16	2.99
Dobele	-2.94	-2.37	1.78	3.31
Gulbene	-2.53	-2.49	2	2.83
Jelgava	-1.11	-2.32	3.09	1.97
Kolka	-2.43	-1.81	2.34	3.15
Liepaja	-1.71	-1.85	2.51	3.08
Mersrags	-1.29	-1.93	1.01	3.61
Pavilosta	-2.54	-2.05	1.8	2.93
Priekuli	-3.05	-2.48	2.43	2.14
Rezekne	-2.6	-2.17	2.45	2.68
Riga	-3.82	-2.04	2.15	2.34
Rujiena	-2.25	-2.24	2.25	1.84
Saldus	-2.19	-2.07	-0.27	2.06
Skriveri	-2.19	-2.23	1.74	2.99
Skulte	-2.23	-2.2	3.29	1.62
Stende	-1.33	-1.93	-0.54	1.9
Ventspils	-2.65	-2.25	3.1	2.25
Zilani	-2.26	-2.2	1.11	2.85
Zoseni	-3.22	-1.7	1.22	1.94

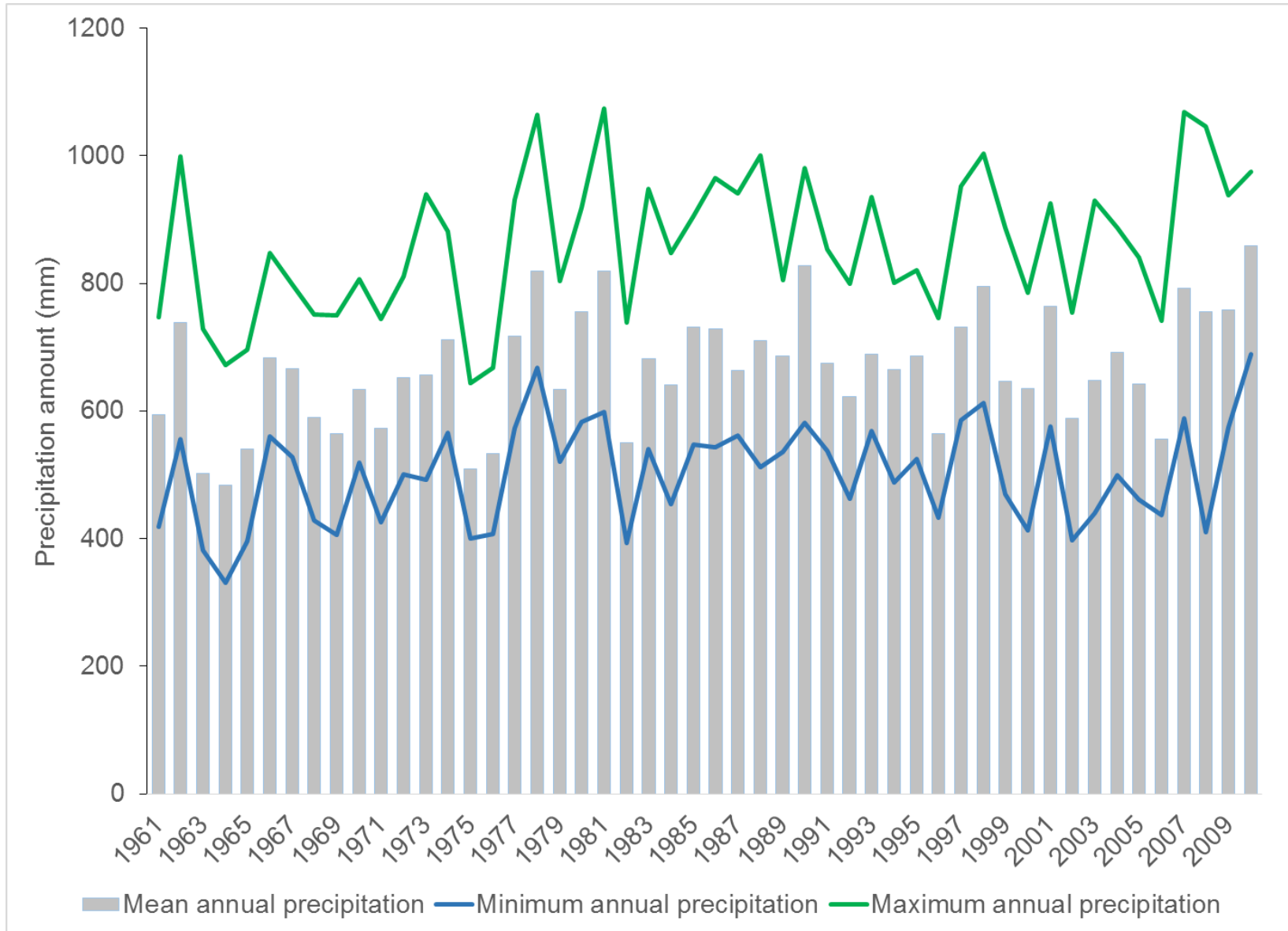


RETURN LEVELS OF EXTREME TEMPERATURE VALUES



Daily minimum air temperature return levels calculated over the period 1961-2010 – the temperature value that might be exceeded once in 100 years

PRECIPITATION



OBSERVED TRENDS IN PRECIPITATION VARIABLES



Index name	MK test statistics	Index name	MK test statistics
CDD	0.39	R10	2.69
CWD	1.6	R20	2.83
PRCPTOT	2.3	R95p	2.91
SDII	3.01	R99p	2.02
		Rmax1day	1.31
		Rmax5day	1.66

Very significant tendency of increase (Mann-Kendall test statistics ≥ 3.3)

Significant tendency of increase (Mann-Kendall test statistics ≥ 2.6)

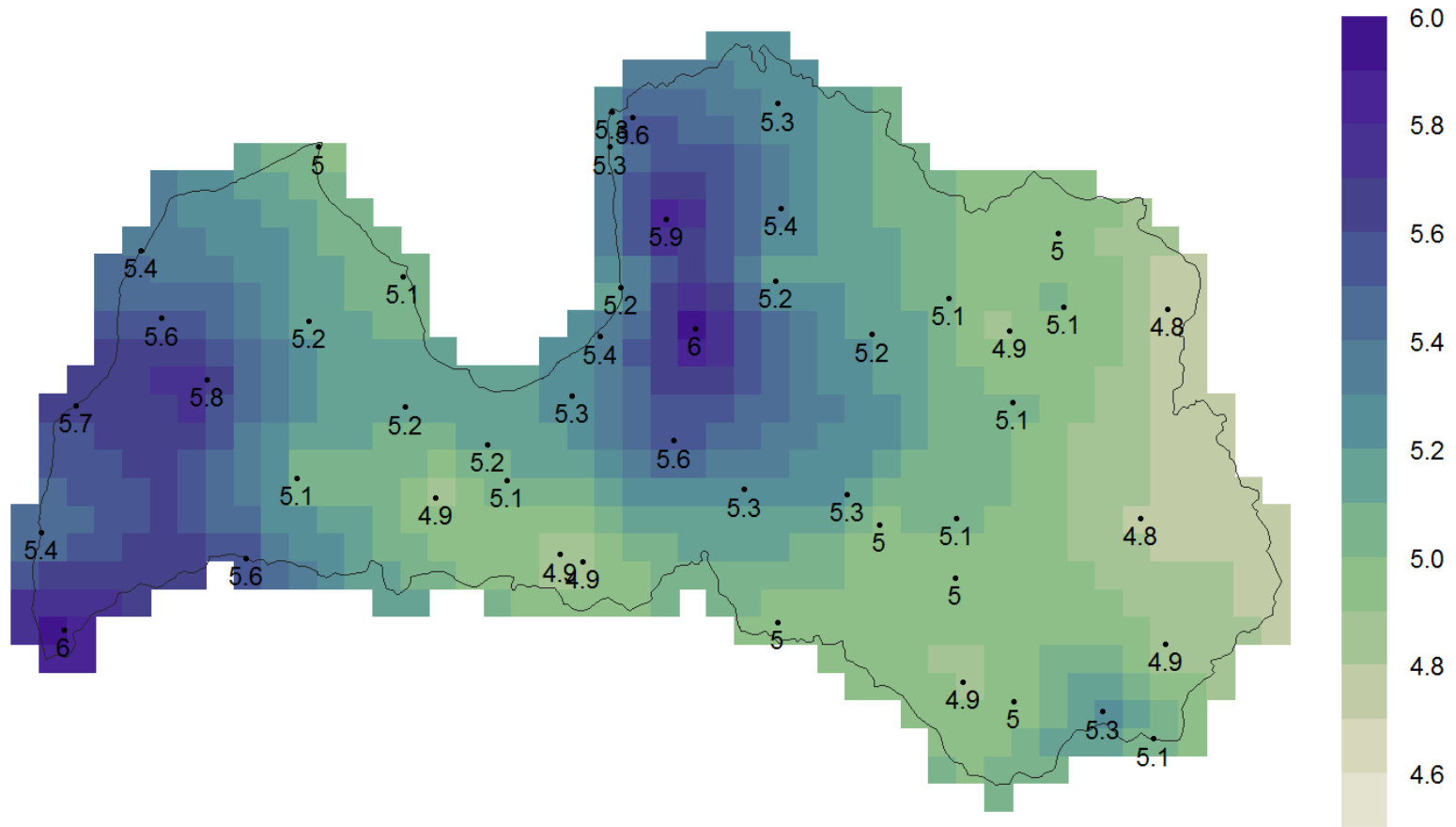
Substantial tendency of increase (Mann-Kendall test statistics ≥ 1.6)

Very significant tendency of decrease (Mann-Kendall test statistics ≤ -3.3)

Significant tendency of decrease (Mann-Kendall test statistics ≤ -2.6)

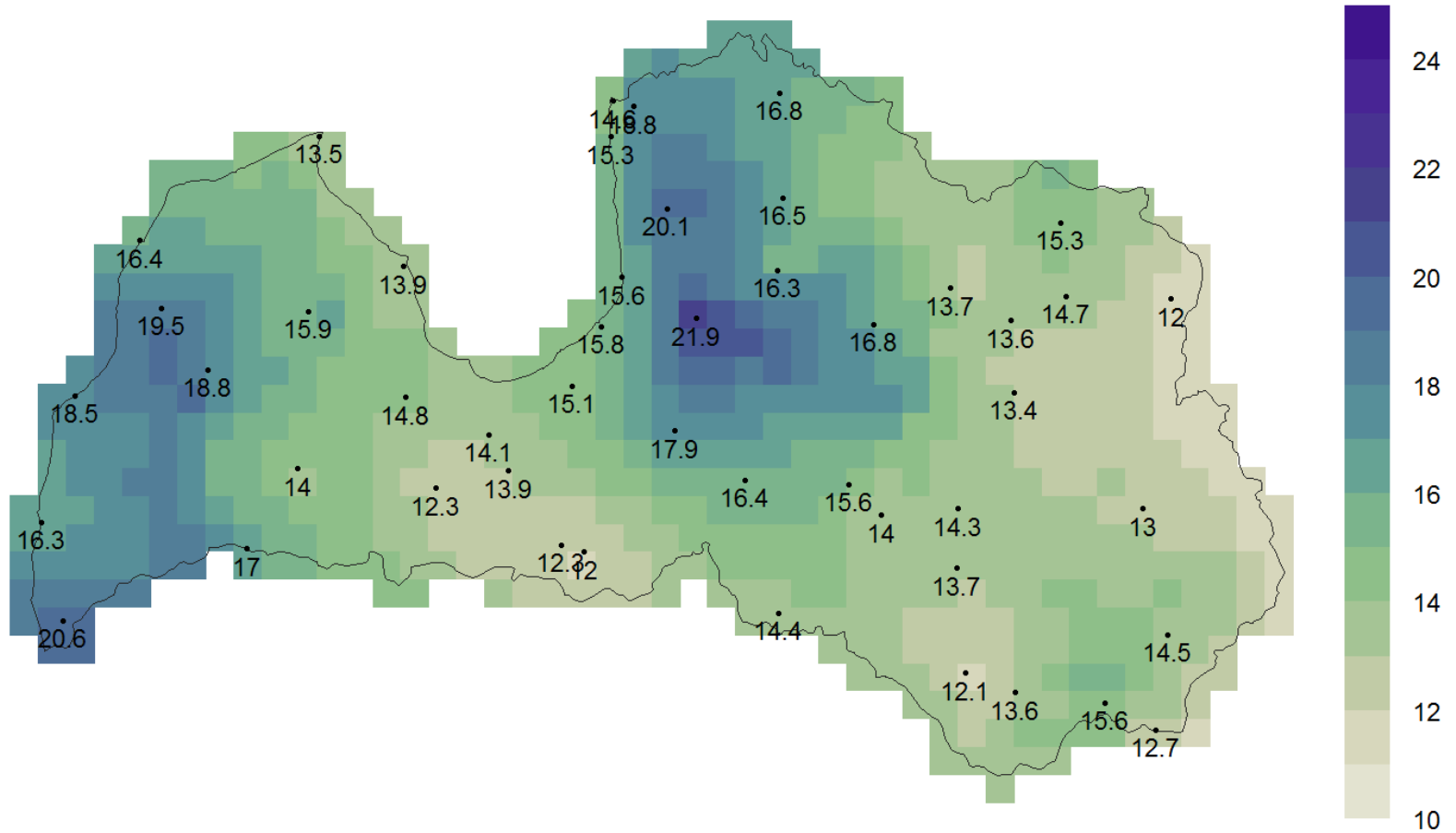
Substantial tendency of decrease (Mann-Kendall test statistics ≤ -1.6)

PRECIPITATION INDICES – DAILY INTENSITY



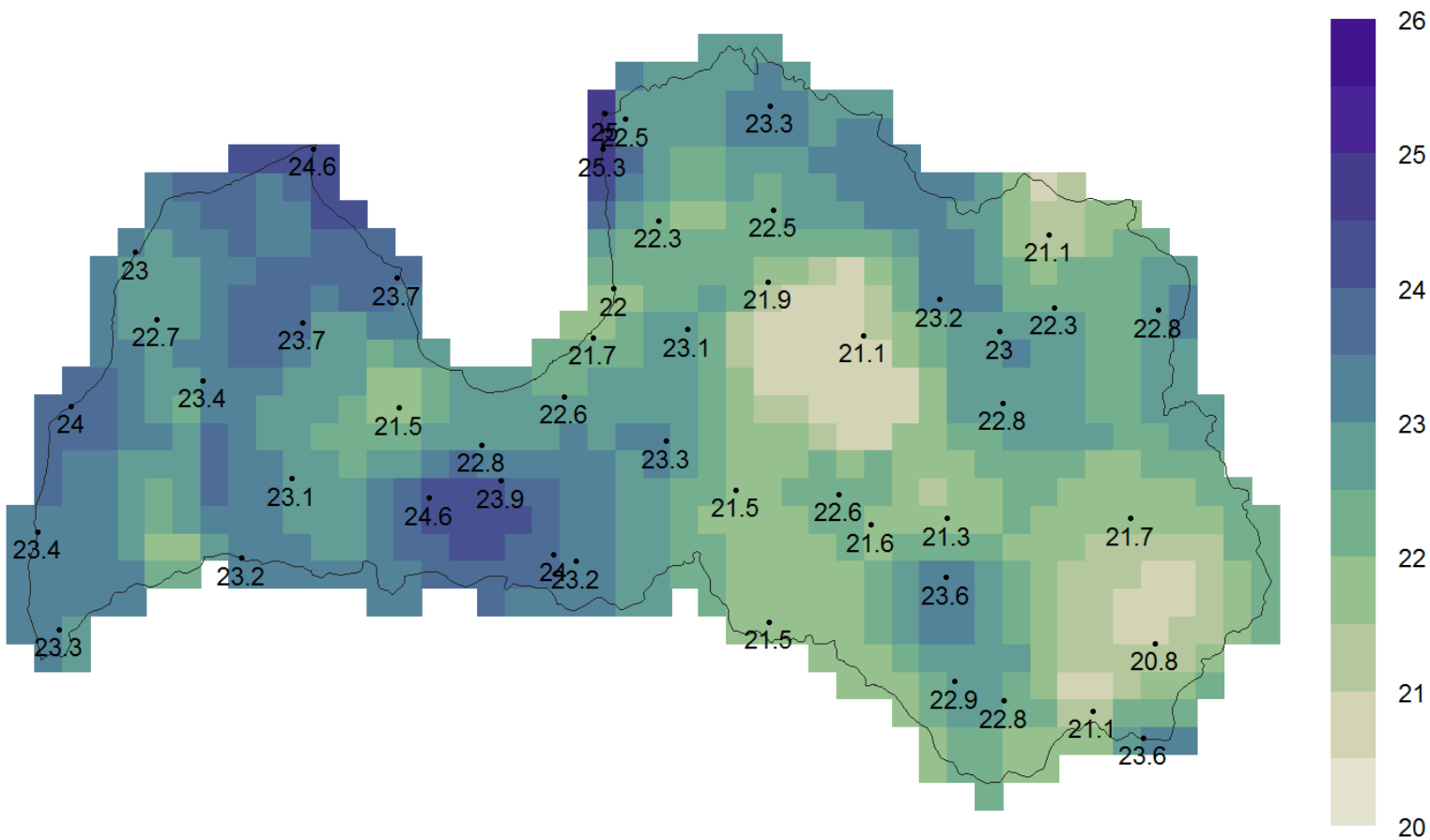
Mean value (mm/day) of the simplified daily intensity index (SDII) in the period 1961-2010

PRECIPITATION INDICES – HEAVY PRECIPITATION



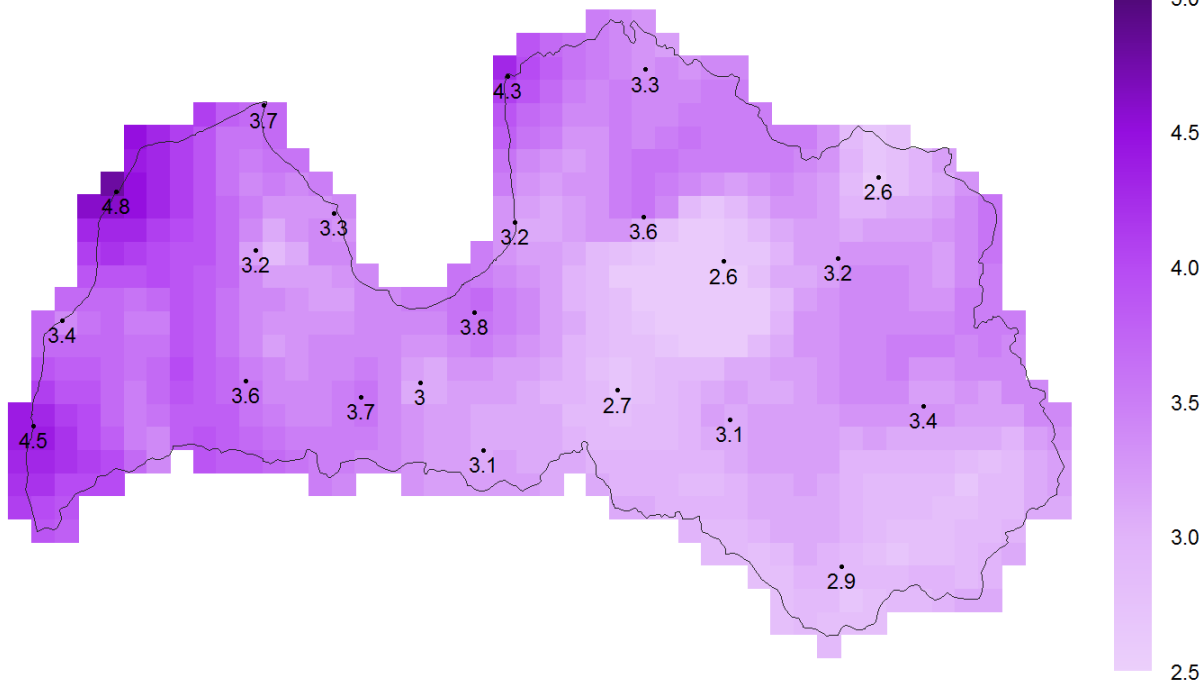
Mean number of days with heavy precipitation (R10) in the period 1961-2010

PRECIPITATION INDICES – DRY PERIODS

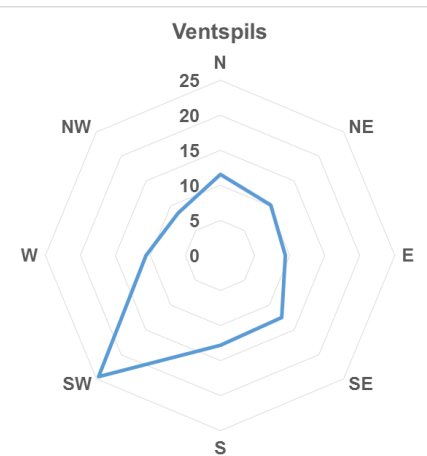
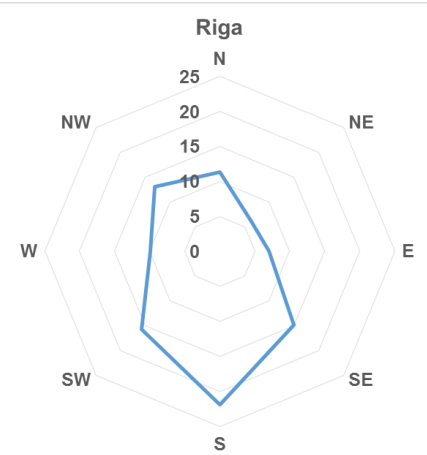
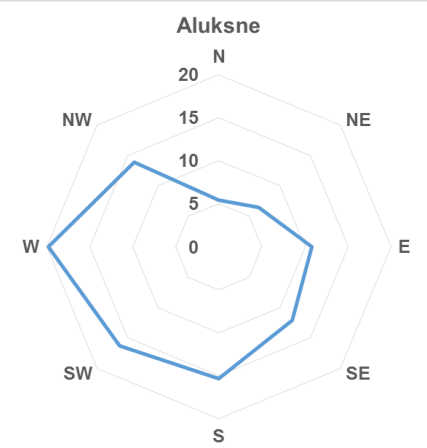


Mean number of consecutive dry days (CDD) in the period 1961-2010

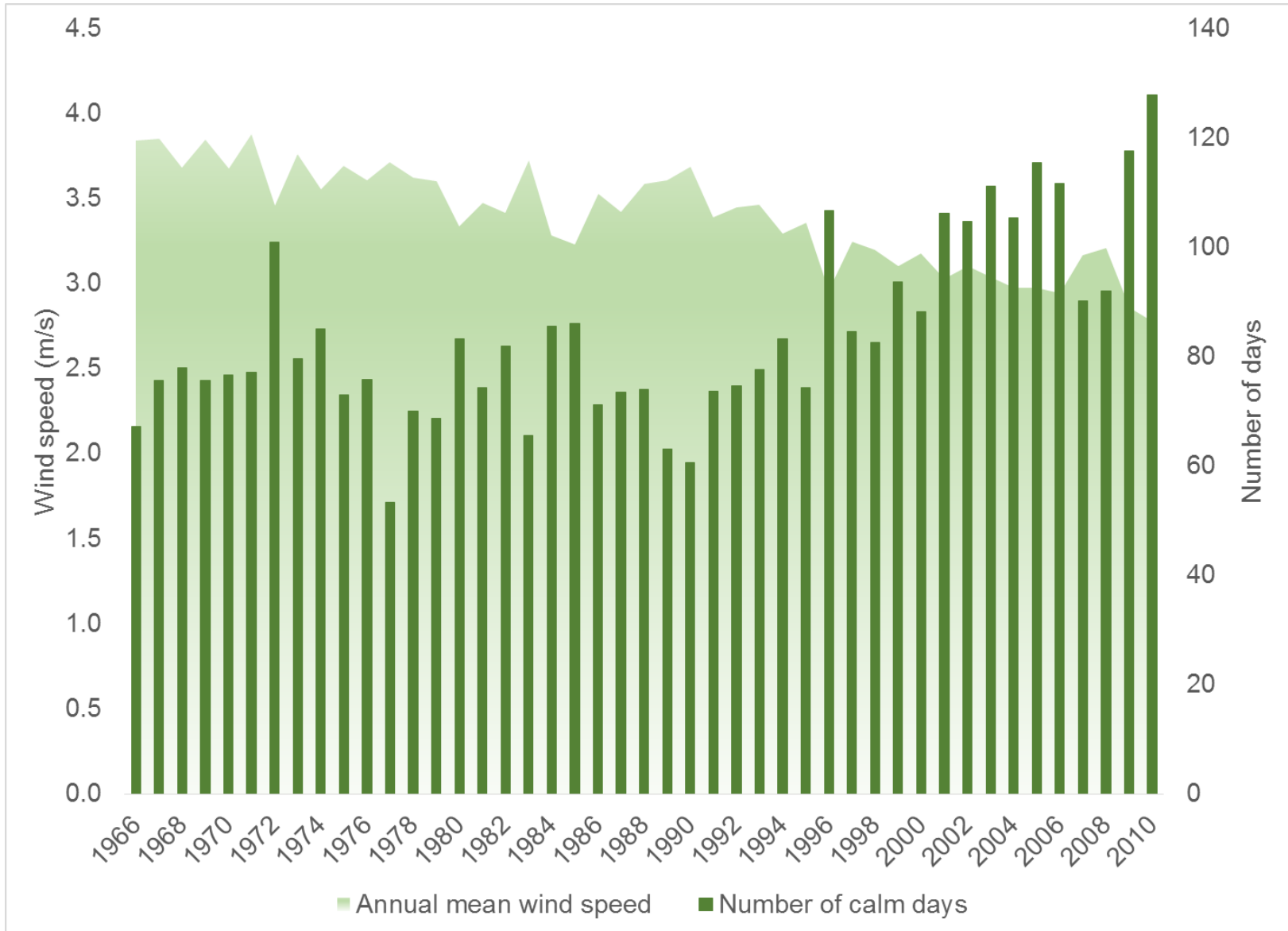
WIND SPEED AND DIRECTION



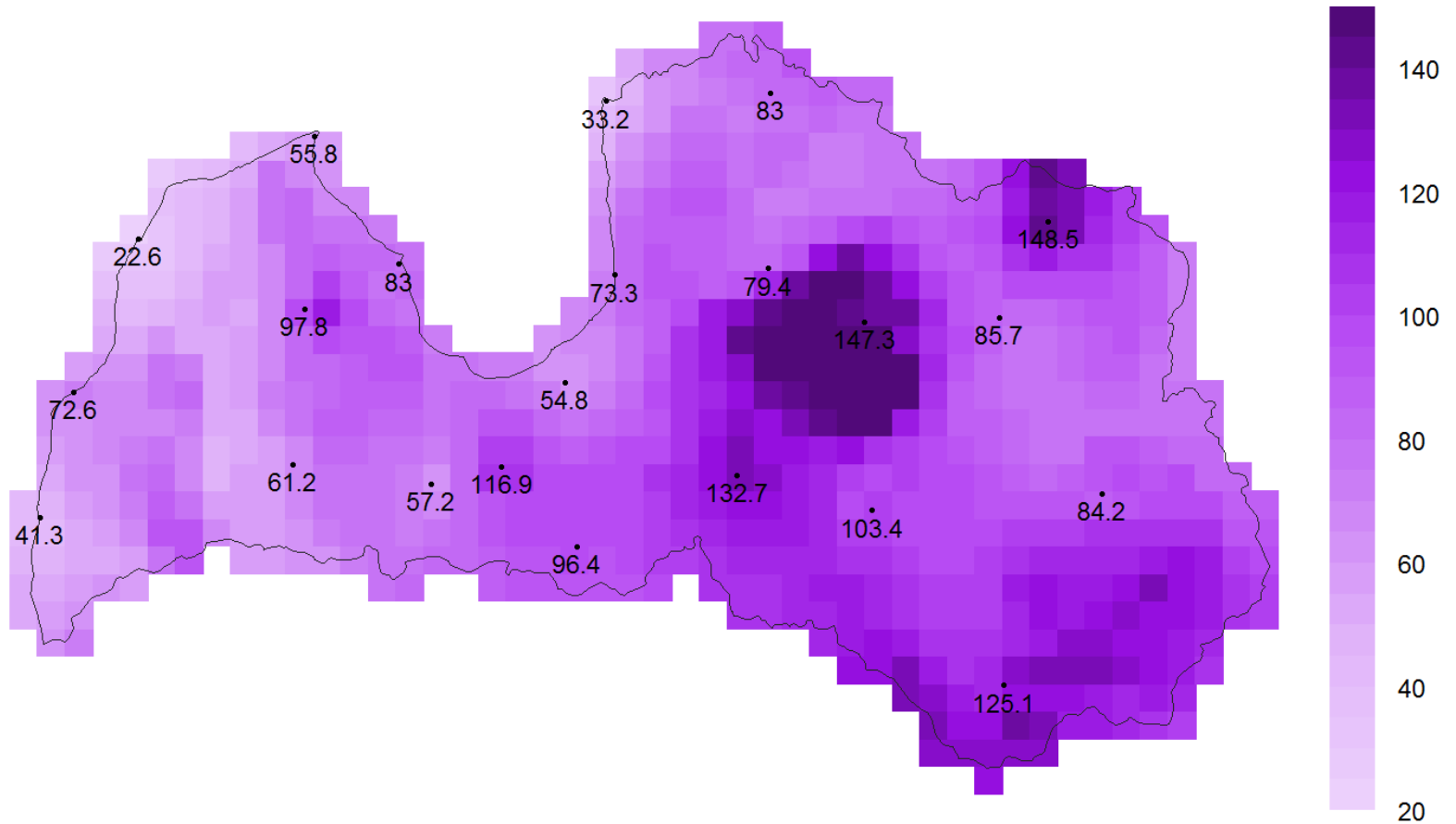
Annual mean wind speed (m/s) and prevailing wind directions in the period 1961-2010



WIND SPEED

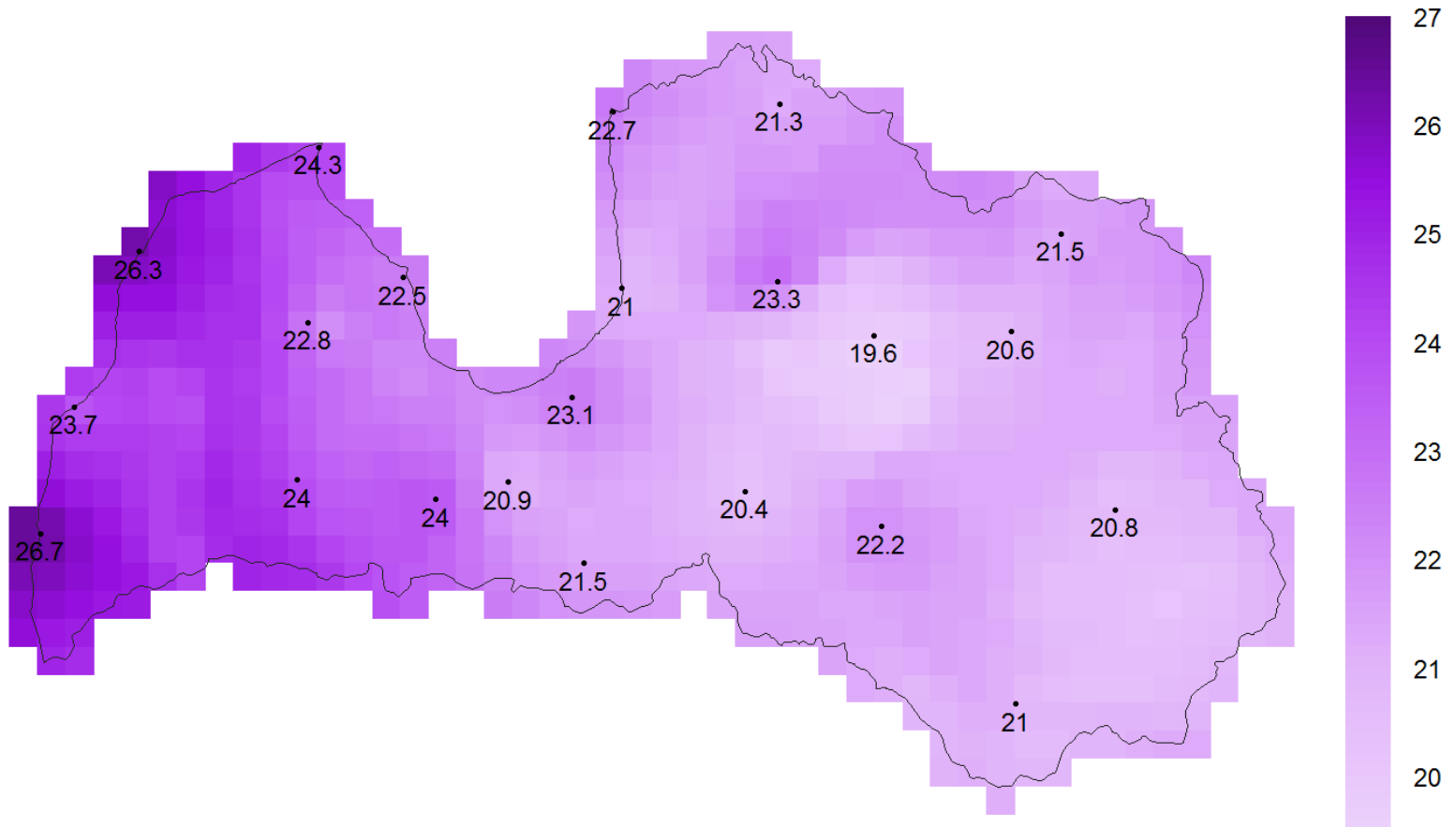


DAYS WITH CALM WIND



Mean number of calm days (FGcalm) in the period 1961-2010

MAXIMUM WIND GUSTS



Averaged annual maximum wind gusts in the period 1961-2010

OBSERVED TRENDS IN WIND VARIABLES



Index name	MK test statistics	Index name	MK test statistics	Index name	MK test statistics
FG	-6.8	DDeast	-0.55	DMeast	0.23
FGcalm	4.37	DDsouth	-0.87	DMsouth	0.48
FG6Bft	-3.84	DDwest	1.18	DMwest	1.72
FXx	-0.05	DDnorth	-0.42	DMnorth	-0.84

 Very significant tendency of increase (Mann-Kendall test statistics ≥ 3.3)

 Significant tendency of increase (Mann-Kendall test statistics ≥ 2.6)

 Substantial tendency of increase (Mann-Kendall test statistics ≥ 1.6)

 Very significant tendency of decrease (Mann-Kendall test statistics ≤ -3.3)

 Significant tendency of decrease (Mann-Kendall test statistics ≤ -2.6)

 Substantial tendency of decrease (Mann-Kendall test statistics ≤ -1.6)

FURTHER WORK WITHIN THE PROJECT



- All observation data and indices representing recent climate change submitted to the experts
- Finalization of return value calculation
- Calculation of future projections in absolute terms and future climate indices
- Participation in adaptation monitoring system development
- Written report and analysis on recent climate change and projected changes in the future