

Ministry of Environmental
Protection and Regional
Development
Republic of Latvia

Maritime Spatial Planning in Latvia

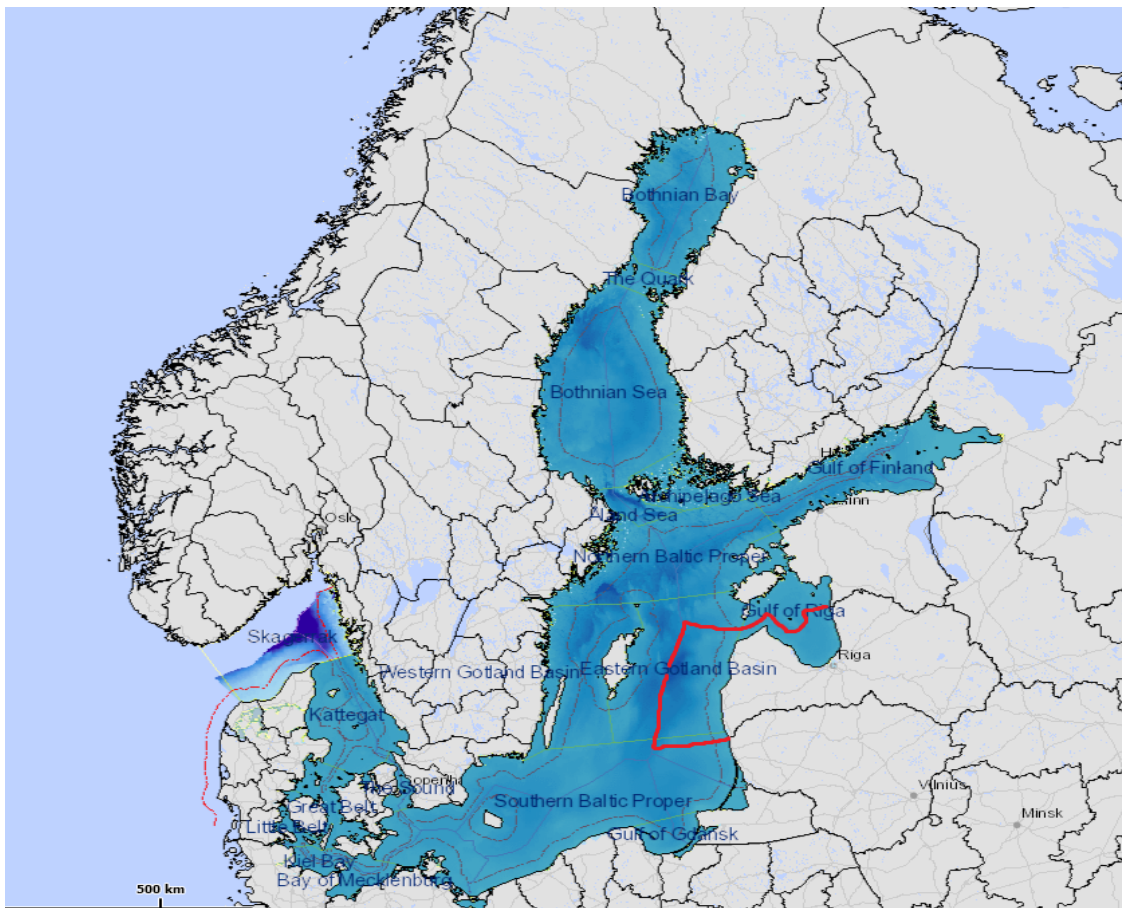
Ingūna Urtāne
Director of Spatial Planning Department

Oslo, 06.10.2015.



Ministry of Environmental
Protection and Regional
Development
Republic of Latvia

LV MSP Planning area

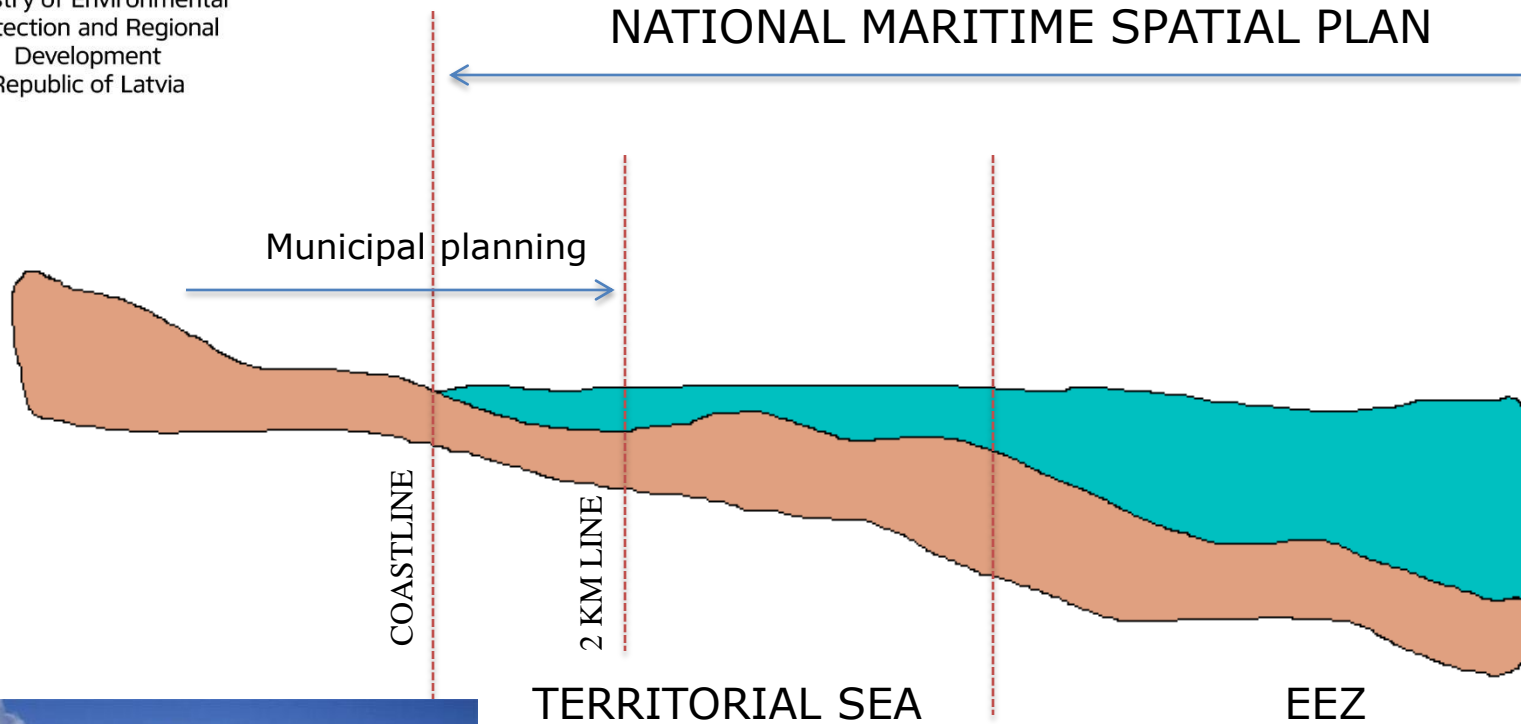


- total area of Baltic Sea waters under jurisdiction of Latvia is **28,000 km²**
- marine waters of Latvia (the inland maritime waters, territorial sea and exclusive economic zone) takes up **7,7% total area of the Baltic sea**
- **32,5%** of total area of the territorial sea is designated as **marine protected areas**
- waters under jurisdiction of Latvia **border** upon **Lithuania, Estonia and Sweden**



Ministry of Environmental
Protection and Regional
Development
Republic of Latvia

NATIONAL MARITIME SPATIAL PLAN





Ministry of Environmental
Protection and Regional
Development
Republic of Latvia

DEVELOPMENT OF MSP SYSTEM

2010

CONCEPT

2012

LEGISLATION

2013

KNOWLEDGE
BASE

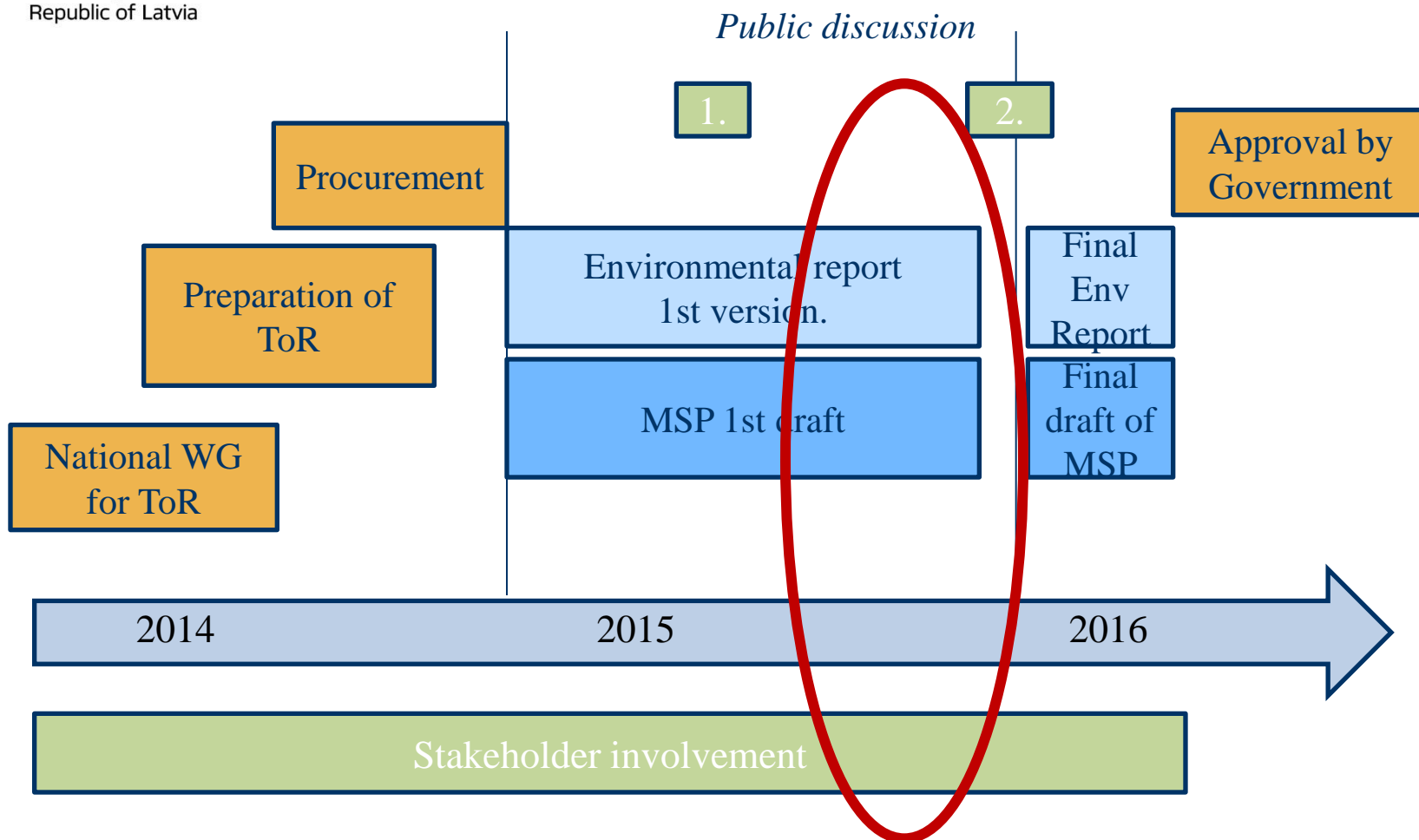
2014

START OF MSP
PROCESS



Ministry of Environmental
Protection and Regional
Development
Republic of Latvia

MSP DRAFTING PROCESS AND TIME SCHEDULE





Ministry of Environmental
Protection and Regional
Development
Republic of Latvia

EU «Blue Growth» strategy

Growth of economic activities in the
sea

- Offshore wind energy
- Traditional sectors of blue economy (shipping, fisheries etc.)
- Extraction of raw materials
- Coastal and sea tourism
- Aquaculture

Marine strategy framework directive

Good environmental status of the
sea

- Changes caused by human activities do not threatened resilience of marine ecosystem (ecosystem approach)



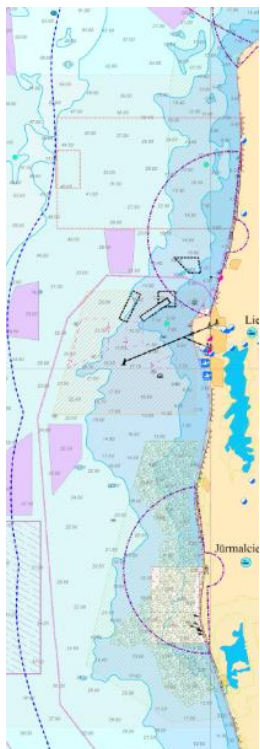
MARINE SPATIAL PLANNING





Ministry of Environmental
Protection and Regional
Development
Republic of Latvia

USES OF THE SEA according to importance for national economy



1. Maritime shipping and port operations - existing
 2. Tourism and recreation - existing
 3. Fishing - existing
 4. Military - existing
 5. Offshore installations -existing
 6. Underwater cultural heritage – under investigation
 7. Offshore energy production - 1 license operational application for 200 MW of total capacity
- *Oil exploration and exploitation* - ? Resources has been evaluated
 - *Extraction of raw materials* - ? Some research has been done



Ministry of Environmental
Protection and Regional
Development
Republic of Latvia



**LATVIAN INSTITUTE OF
AQUATIC ECOLOGY**



**MARITIME ADMINISTRATION
OF LATVIA**

MAIN ACTORS

- MSP is national level plan adopted by government
- Municipalities have responsibility to plan coastal waters - 2 km from shoreline towards the sea (as part of local municipal planning process)



Ministry of Environmental
Protection and Regional
Development
Republic of Latvia

CONTENT OF THE MSP

ANALYSIS

Socio economic,
environmental
analysis

Trends and
conclusions

STRATEGY

Priorities

Concept of sea
use

MAPS

Scenarios, sea use
zoning

Thematic maps
and schemes

USES AND MANAGEMENT

Zoning principles
criteria,
justifications

Implementation
provisions

1st draft - end of
November 2015

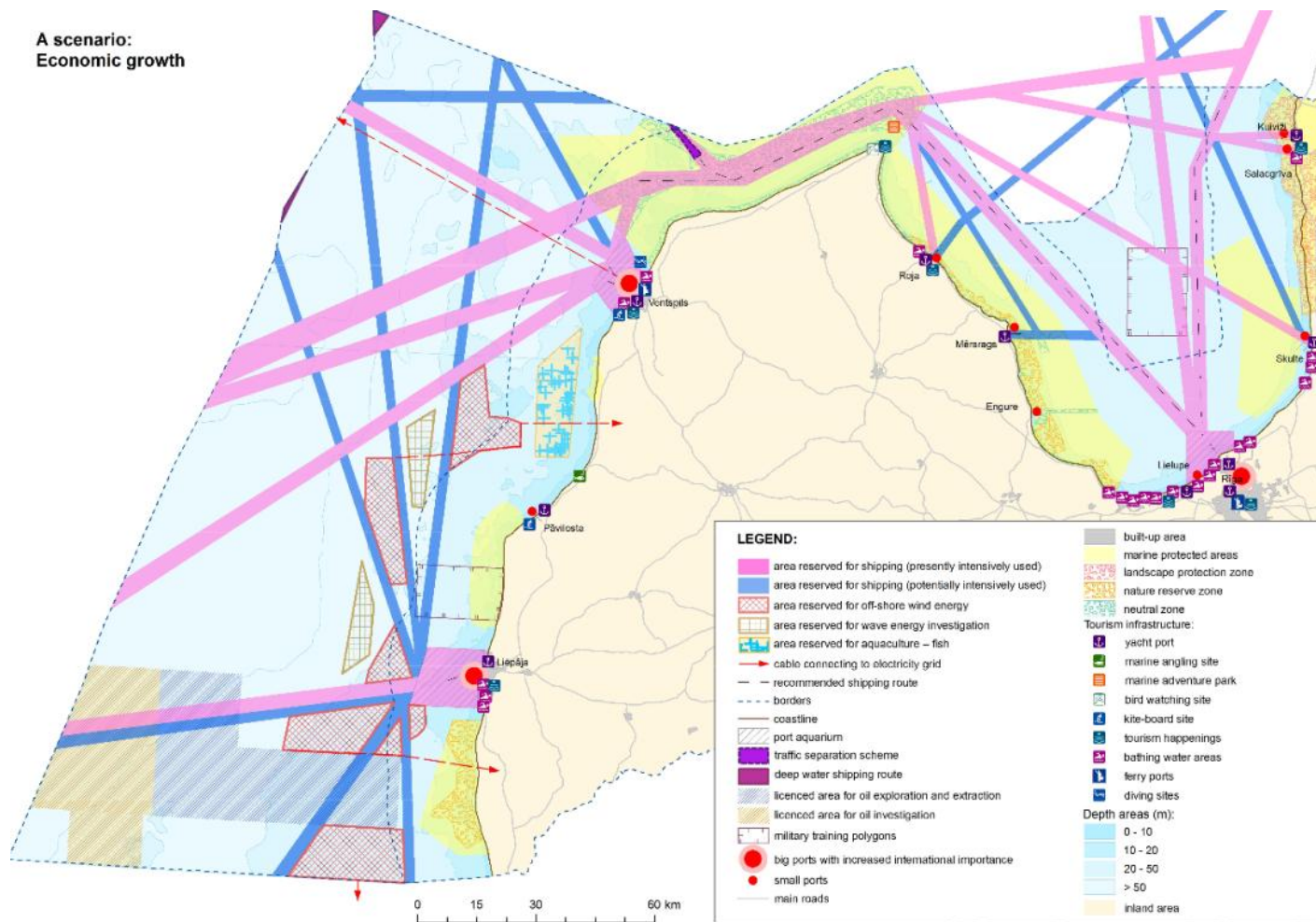
National stakeholder and Cross-border Public consultations-
December 2015 – January 2016



Ministry of Environmental
Protection and Regional
Development
Republic of Latvia

Strategy 2030

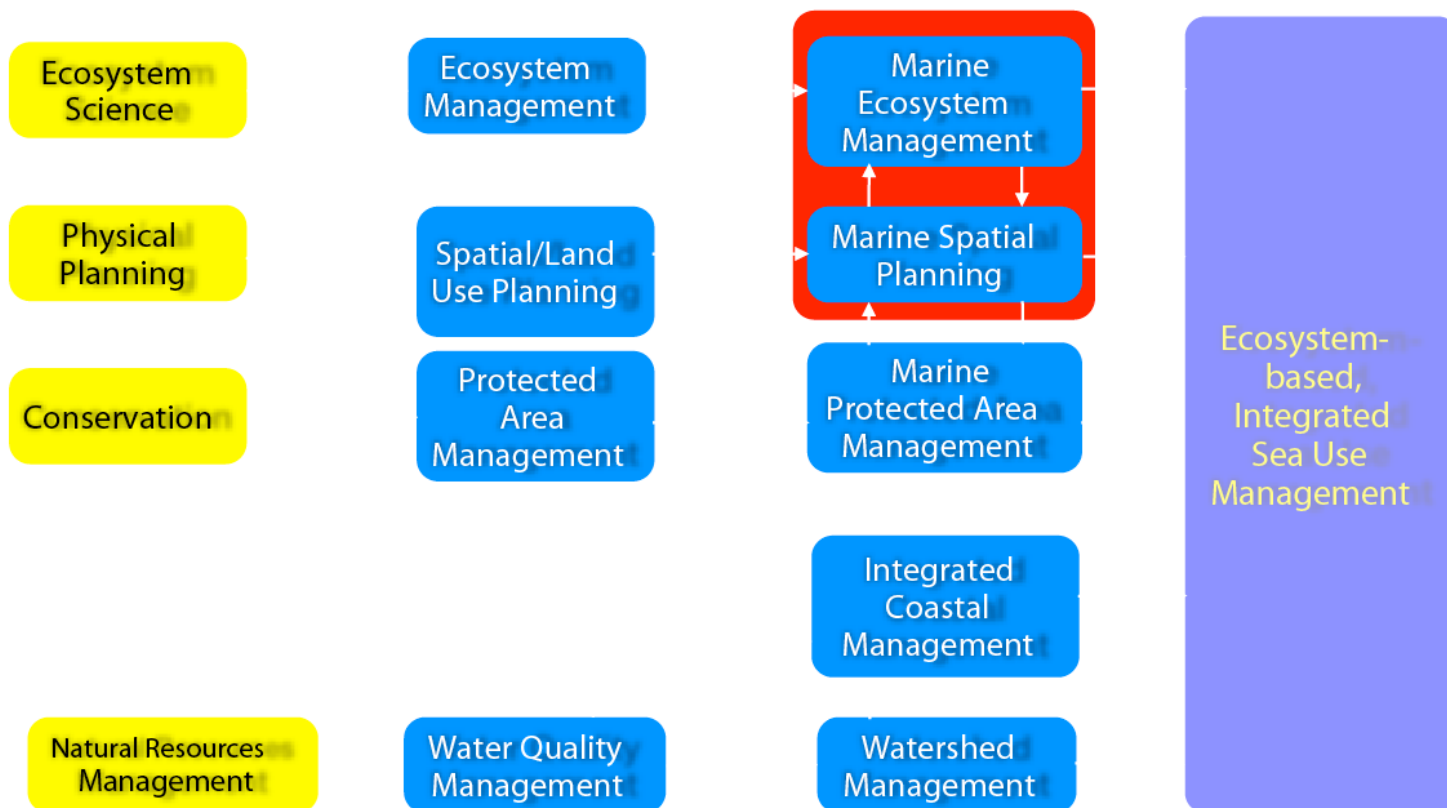
A scenario:
Economic growth





Ministry of Environmental
Protection and Regional
Development
Republic of Latvia

Evolution Toward Integrated, Sea Use Management



By consultant,
Marine Spatial
Planning
Intergovernmental
Oceanographic
Commission
UNESCO

Charles N. Ehler



Ministry of Environmental
Protection and Regional
Development
Republic of Latvia

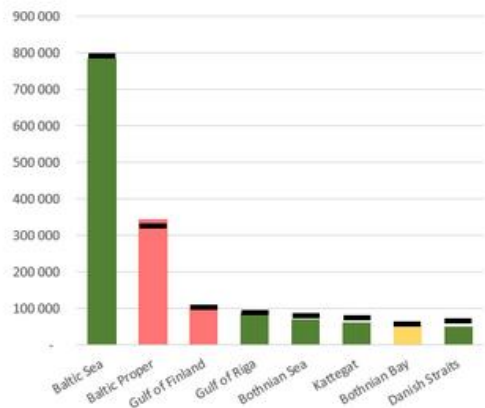
WFD AND MSP - Eutrofication of Baltic sea

P and N loads from land based and airborne sources

Nitrogen - Total inputs compared to Maximum Allowable Input (MAI)

Average normalized annual inputs 2010 - 2012 in tonnes

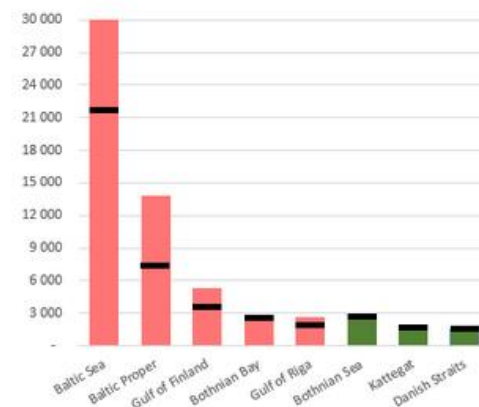
Inputs higher than MAI
Inputs lower than MAI
Not statistically possible to determine if MAI fulfilled
MAI



Phosphorus - Total inputs compared to Maximum Allowable Input (MAI)

Average normalized annual inputs 2010 - 2012 in tonnes

Inputs higher than MAI
Inputs lower than MAI
MAI



- in accordance with the results of farm survey data (2010), 88% of the area of arable land is treated by conventional methods, only 12% of farms used environmentally friendly cultivation techniques
- 37% of cultivated cropland areas in the winter months are left without plant coverage. The rest of the area is covered with winter crops (47%), cover crops (5%) or plant residues (11%)
- on the condition that agricultural land area and farm's animals number is invariable, the utilization of artificial fertilizers in recent years have increased
- municipal sector`s contribution is 4 % of total N and 5 % for total load P



Ministry of Environmental
Protection and Regional
Development
Republic of Latvia

MAPS AND DATA

Existing uses 1:200 000

Navigation
maps
Existing uses
Protected areas
Restrictions

Sectors maps 1: 200 000/ cartoschemes

- Ecosystem
services mapping
- Biological
diversity
areas/priorities
- Sea geology
- Uses by sectors
- Land sea
interactions

Scenarios strategies

Scenario A

Scenario B

Scenario C

Scenario D

Zoning 1:200 000

Priorities
Reservations
Permitted uses



Ministry of Environmental
Protection and Regional
Development
Republic of Latvia

MSP is structured data system – used for permitting and licencing

- Part of national Spatial planning information system
- Data and information is up to date
- Possibility to add new data and information (new knowlegde)
- Main users and stakeholders- state agencies sharing data and information
- Public module – restricted use (navigation, cultural heritage etc. Places)

Proposal for data model – until march 2016

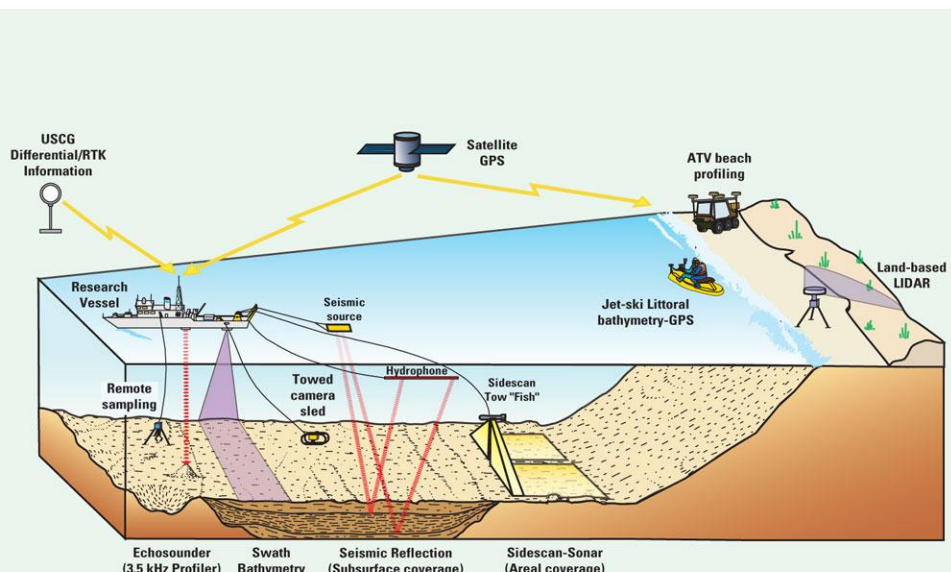


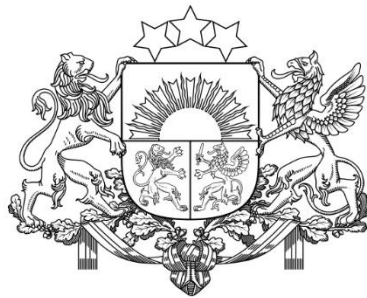
Ministry of Environmental
Protection and Regional
Development
Republic of Latvia

To create reliable GIS based MSP for decision making - more research is needed...

National effort : 3 million euro from Fisheries fund have been allocated for marine research in 2014-2020:

- definition of indicator values for **D1**
- inventory of invasive species **D2**
- development food chain concept **D4**
- survey for sea bed integrity **D6**
- definition of limit values for dangerous substances **D8**
- assessment of pollution with microscopic plastic particles **D10**
- assessment of noise level in marine waters **D11**
- valuating marine ecosystem in monetary terms
- elaboration/adaption of data assessment methodologies





Ministry of Environmental
Protection and Regional
Development
Republic of Latvia