

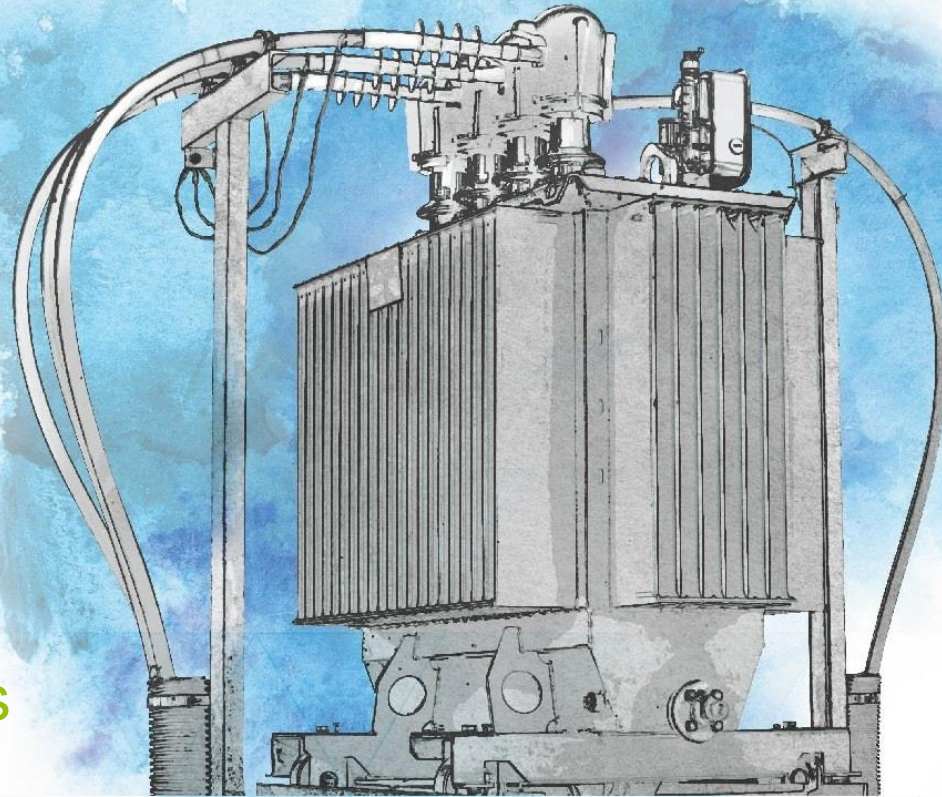
Climate risk management in electricity supply area

Armands Staltmanis

Sadales tīkls AS

Maintenance director

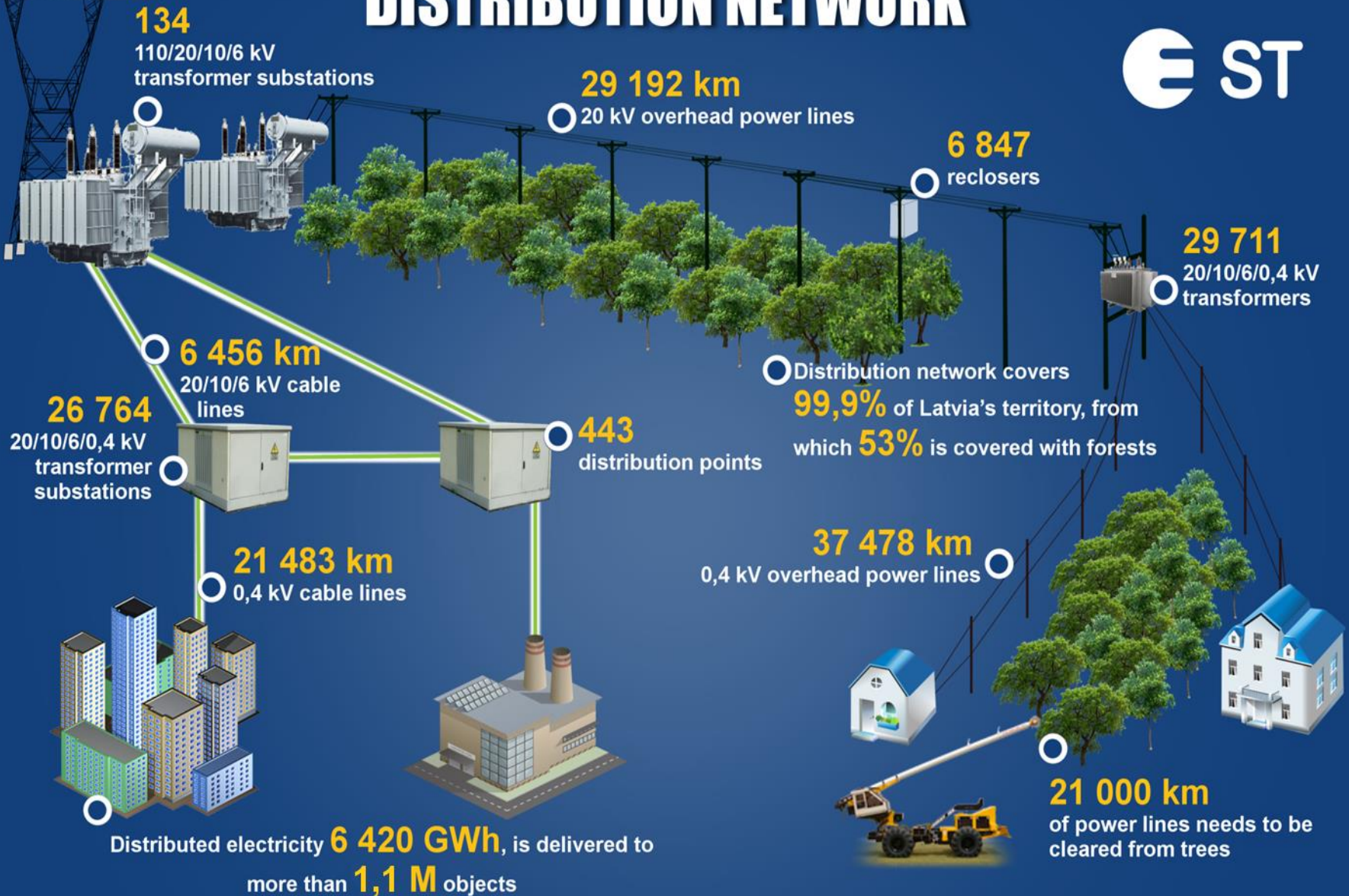
01.07.2016



Content

- ✓ Short about Sadales tīkls AS
- ✓ The most common risks
- ✓ Increasing of network reliability
- ✓ Preventative measures

DISTRIBUTION NETWORK

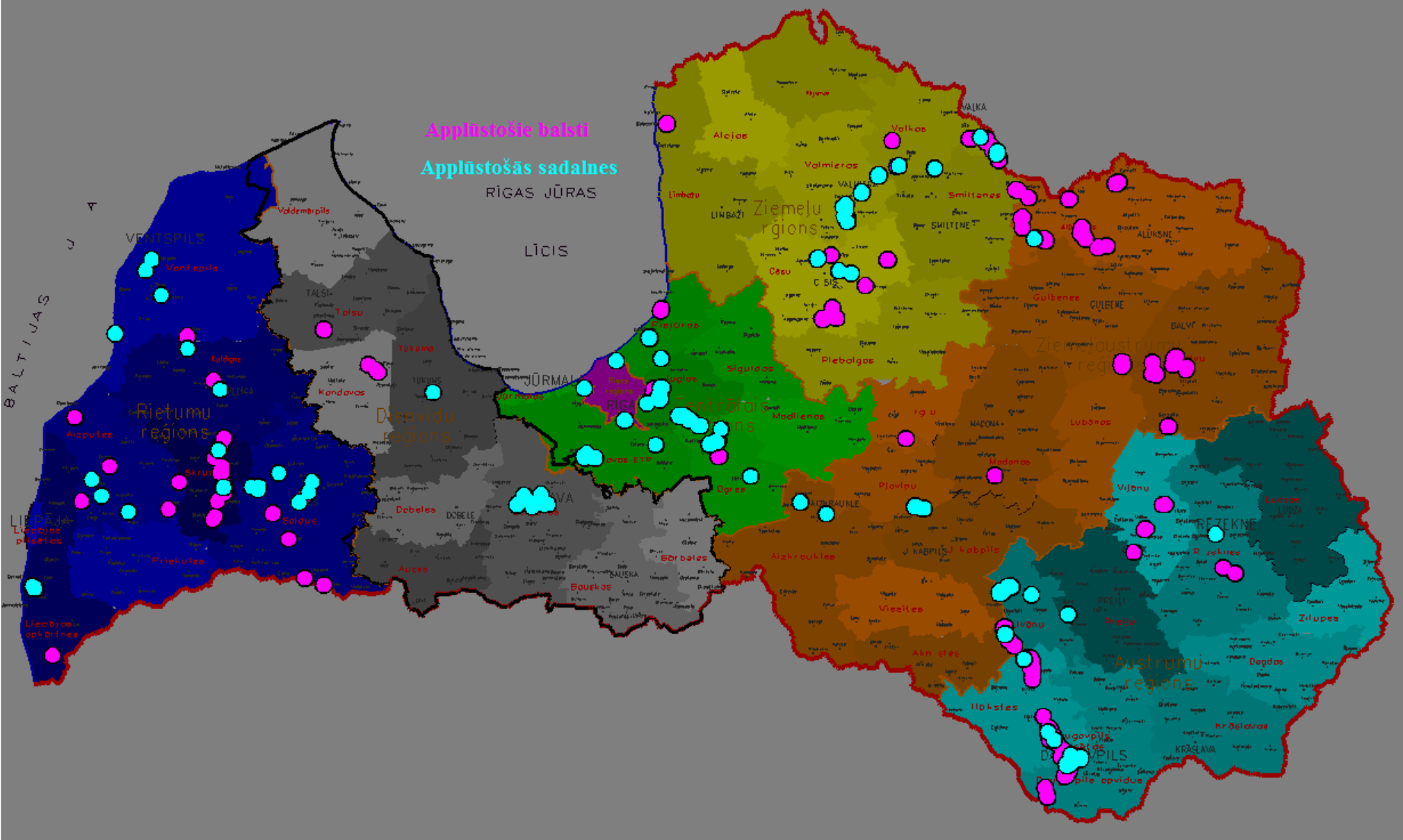


The combined length of electricity distribution network at the beginning of 2016 was **94602** kilometres – more than twice the circumference of the Earth along the equator.

Floods



Flood risk zone for Sadales tīkls



Storms

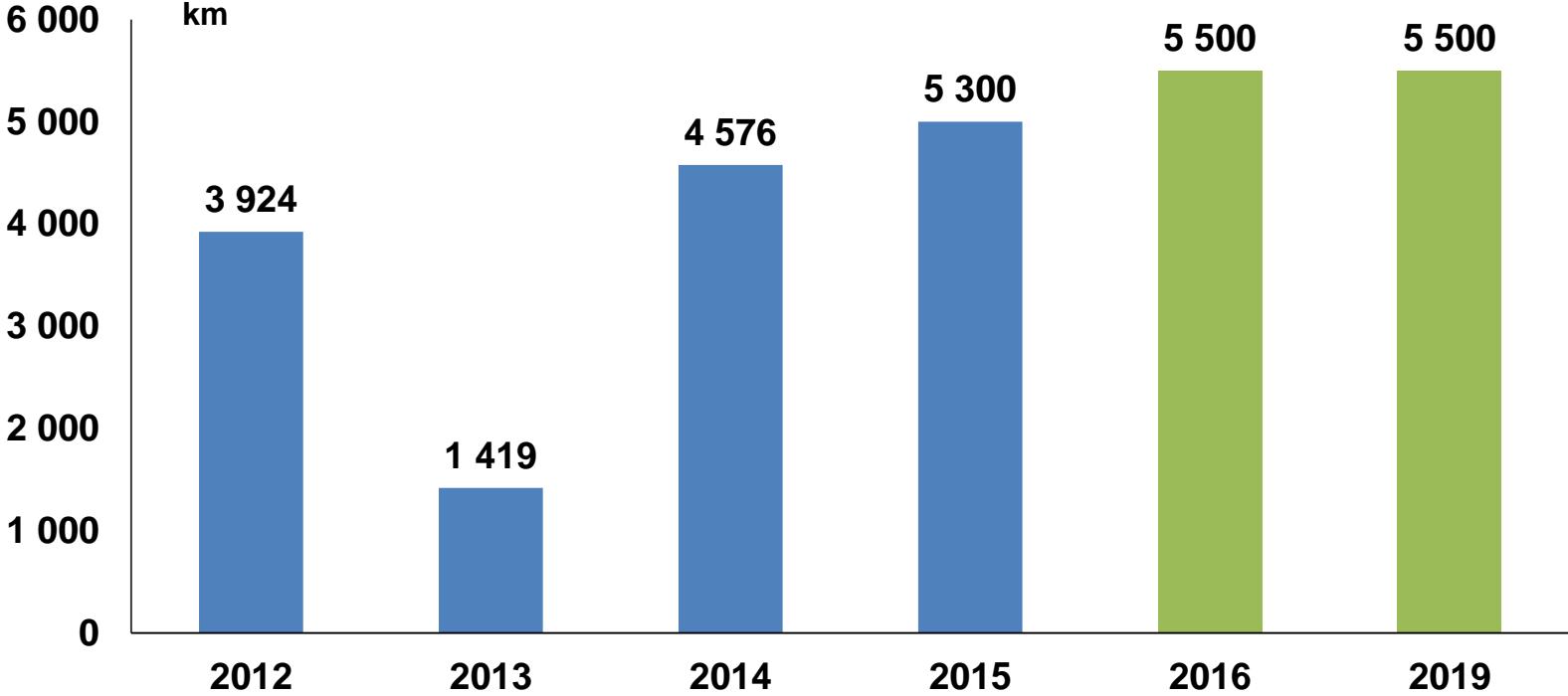


Freezing rain

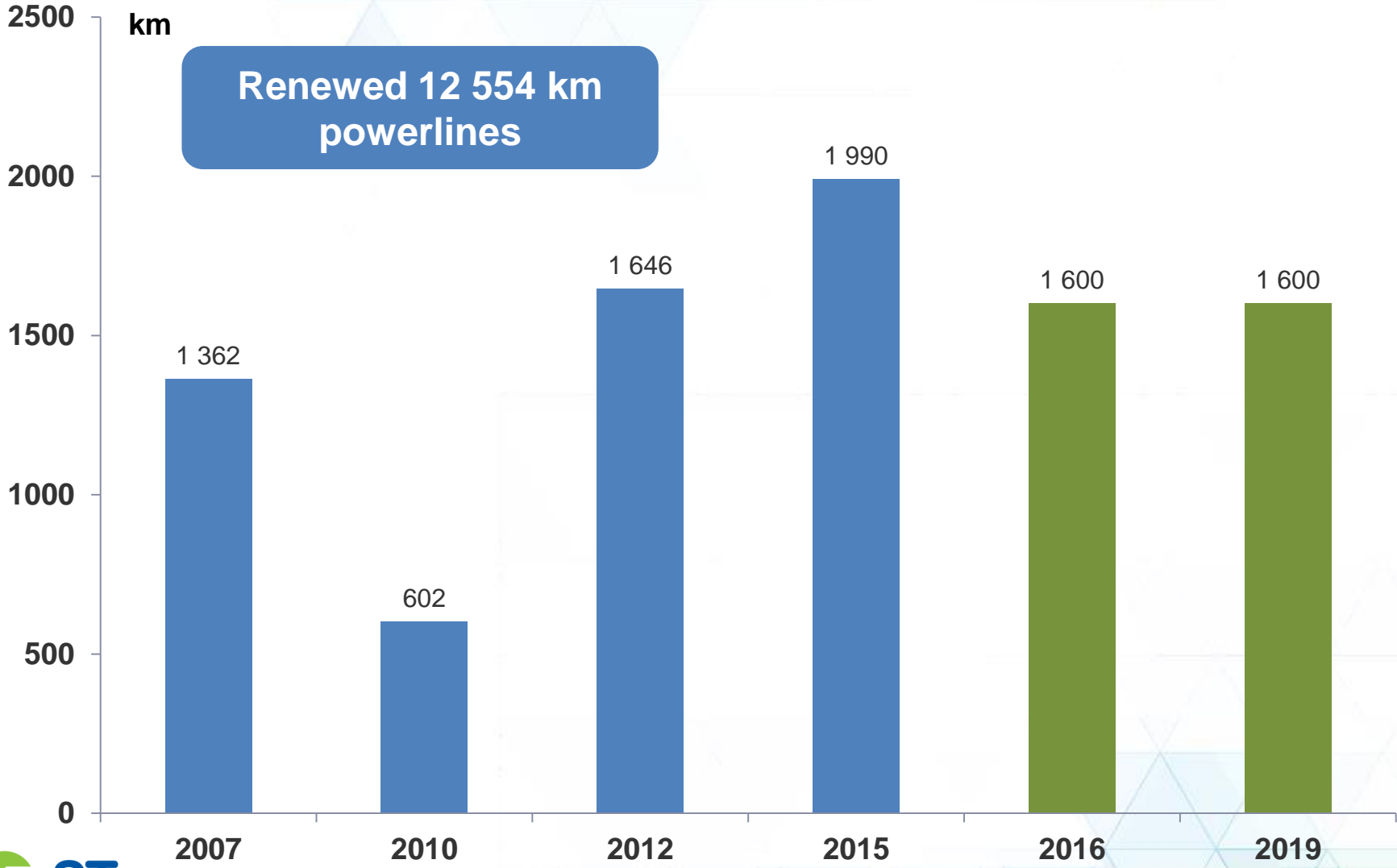


In 2011 on such storm
cost about **4 M EUR**

Improving reliability – increasing amount of cleaned powerline runs



Investment in grid development – achieved stable volume of renewed power lines

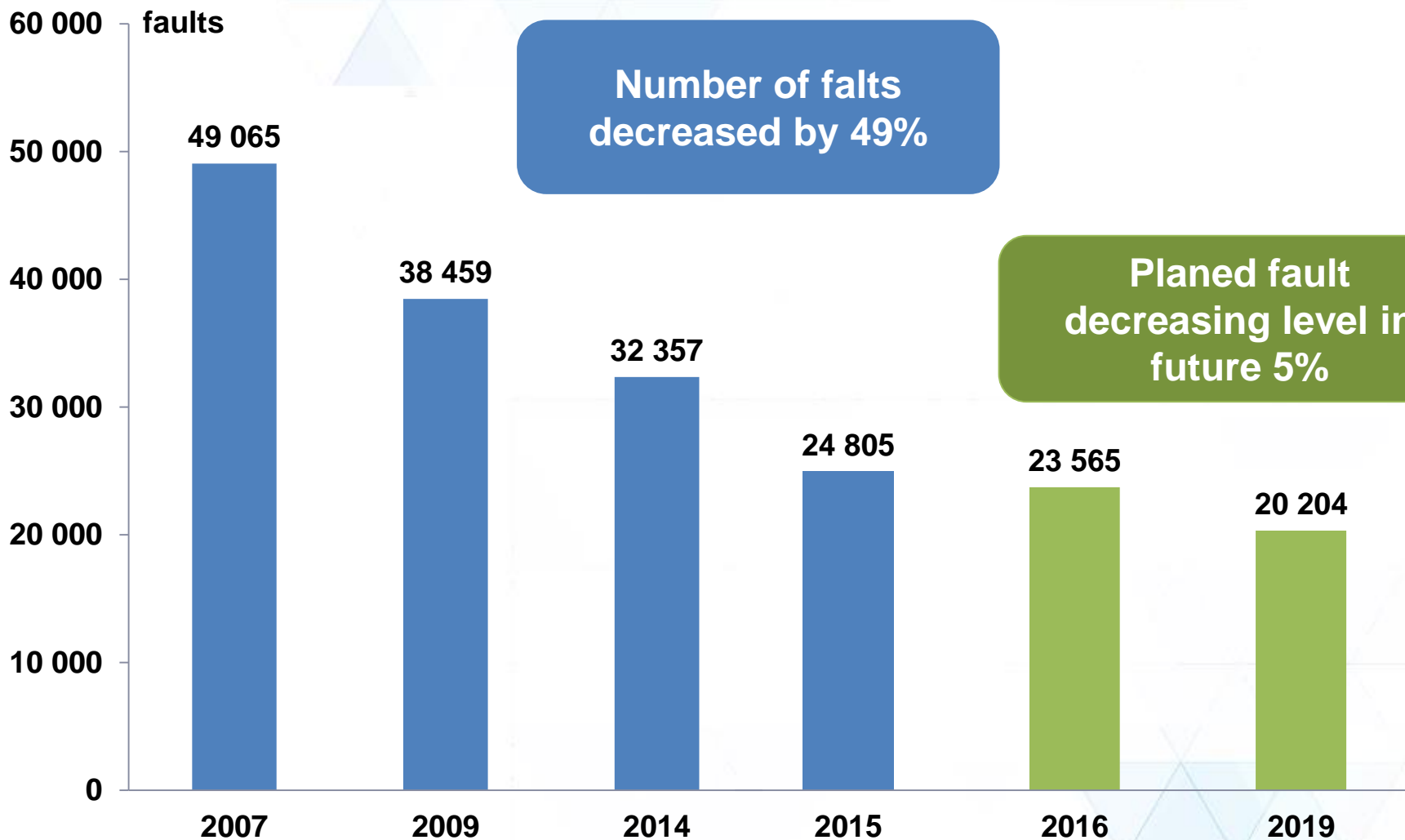


Technical policy statements for electrical lines

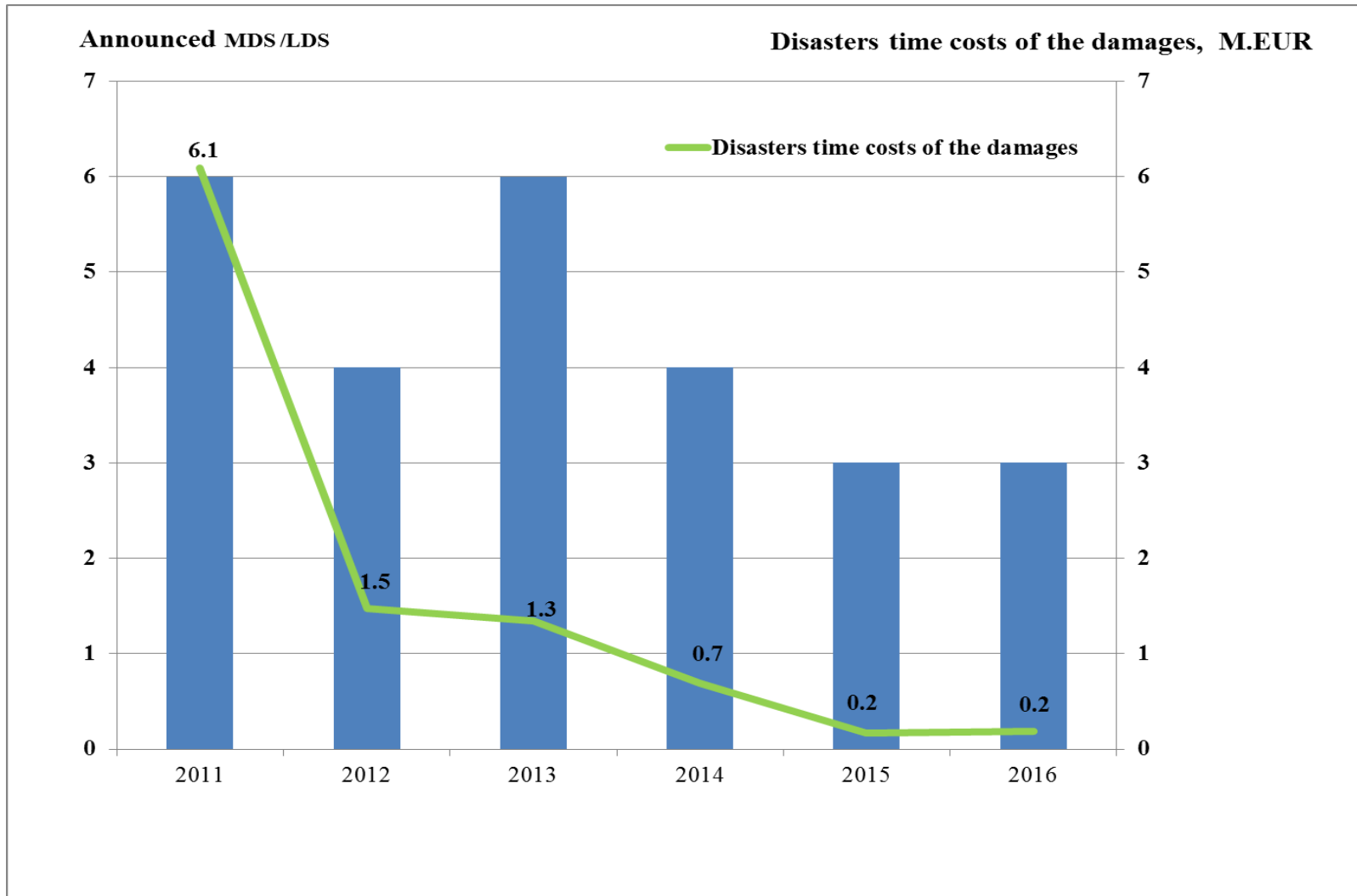
	Forrest	Mixed area	Open area
Cable line	Main solution	City, town, village feeding line	City, town, village feeding line
Insulated wire	Short branches <i>up to 1 km</i>	More than 50% of track to be cleaned High number of automatic re-switching	-
Bare wire	-	Less than 50% of track to be cleaned Low number of automatic re-switching	Main solution in rural area

Cities, towns, villages over 200 customers – cable lines

Improving reliability – significantly reduced the number of faults



Disasters caused damage prevention costs



Preventative measures - be ready for storm!

- ✓ The regulations for actions of personnel mobilization in disasters
- ✓ Reporting arrangements for emergency events (SMS for our personal and local municipalities)
- ✓ The list of socially sensitive customers
- ✓ The list of local municipalities responsible staff (↔)
- ✓ Agreements with electrical construction companies
- ✓ Agreements about operational cooperation with : medical institutions, telecommunications operators, large cities overnight on-call services, electricity producers.....
- ✓ Cooperation agreements with National armed forces and State fire and rescue service



Human resources

- ✓ Sadales tīkls AS staff - 335 teams (1,000 employees)
- ✓ Contractor personnel - 165 teams (630 installers)
- ✓ Forest service providers - 51 company



Special technics

- ✓ Tractors and poles mounting technics- 165
- ✓ High-performance tractors - 6 pcs.
- ✓ Quads - 36 pcs.



Portable generators - a total of 70 units.

- ✓ Small power generators (up to 5-10 kW) - 30 pcs.
- ✓ Medium-power generators (30-200kW) - 36 pcs.
- ✓ High power generators - 4 pcs. (3x350kW and 1x650 kW)



Thank you!

www.sadalestikls.lv

info@latvenergo.lv

AS "Sadales tīkls"

Šmerļa iela, 1, Rīga, LV-1230

Tālrunis: +371 67728222

Fakss: +371 67728880

 /Sadalestikls

 /AS «Sadales tīkls»

 /AS «Sadales tīkls»