



---

May 2014

GRID-Arendal, Norway  
**Environmental Knowledge for Change**

---

Ieva Rucevska

Norwegian Foundation

A Centre Collaborating with UNEP

UNEP's Key Polar Centre

GRID-Arendal organises and transforms available environmental data into credible, science-based information products, delivered through innovative communication tools and capacity-building services targeting relevant stakeholders.





Polar & Cryosphere

Capacity Building Assessments

Marine

Communications, Outreach & PR

# Capacity Building & Assessments

- Environmental Crime

  - *The African Elephant Crisis*

  - *Land and Water Grabbing*

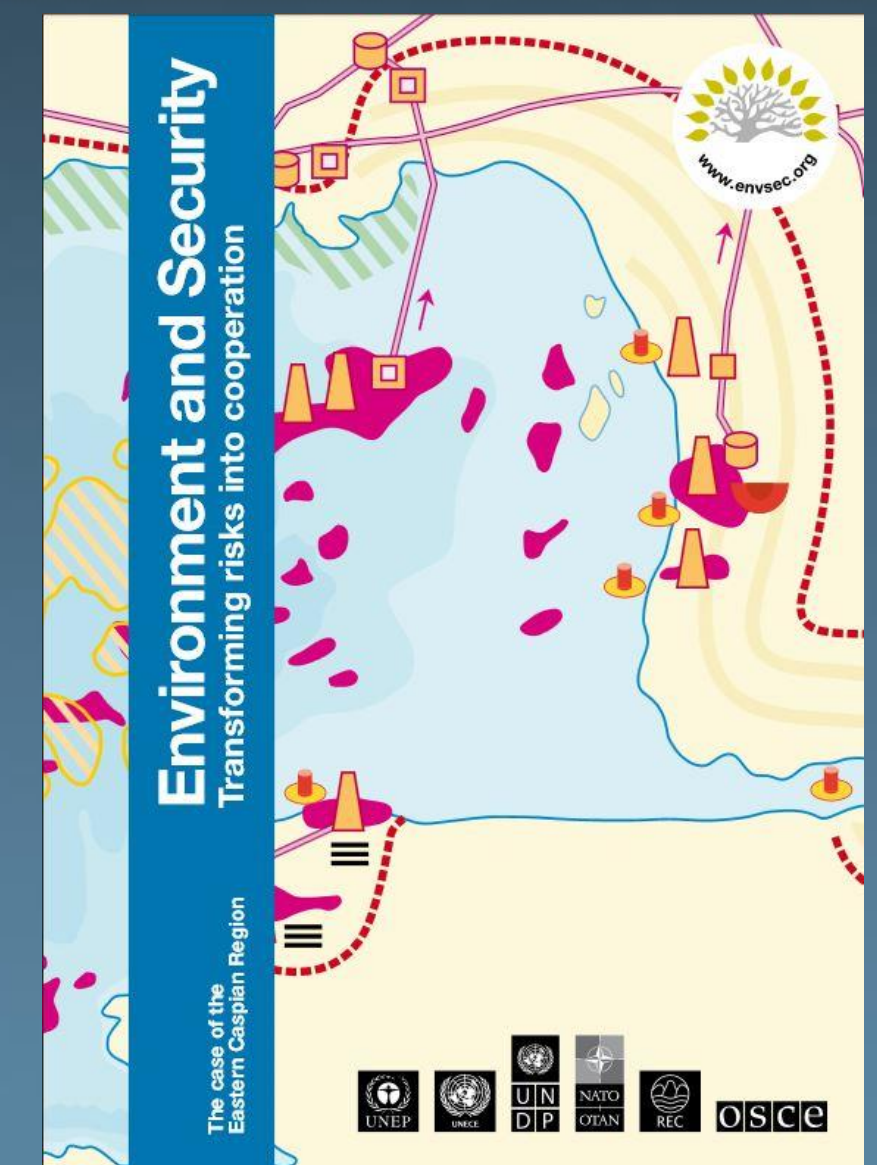
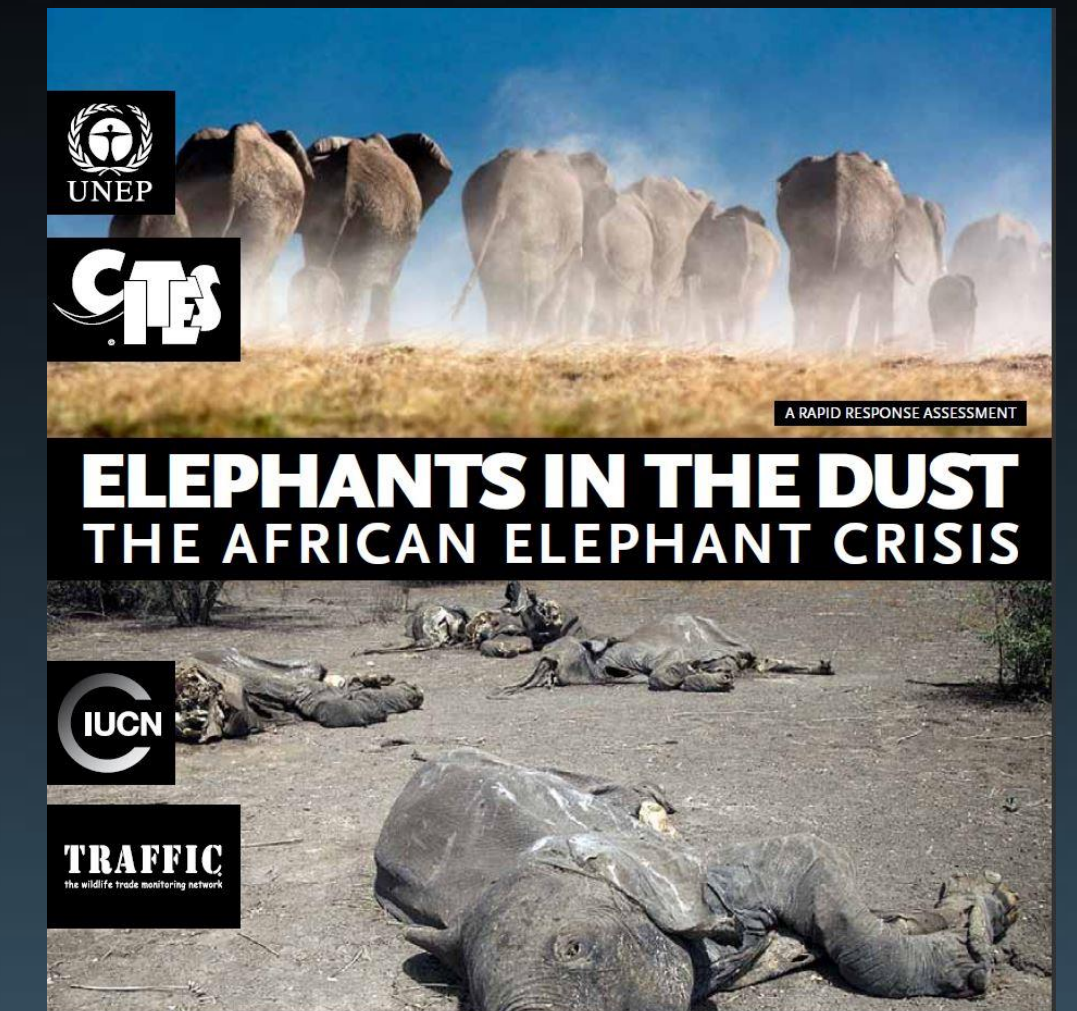
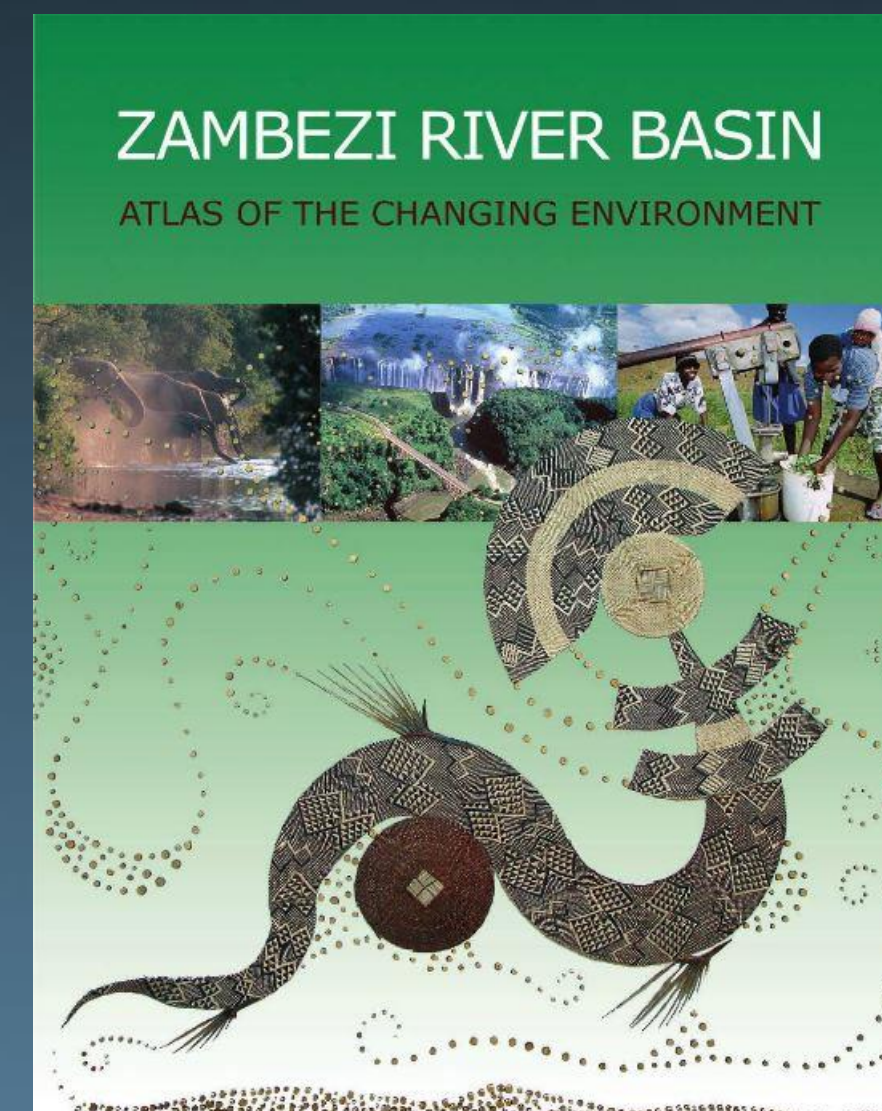
- Transboundary Water Management

  - *Technical support for the River Basin Commissions in Eastern and Southern Africa*

  - *Support for the Tehran Framework Convention*

- Climate Change

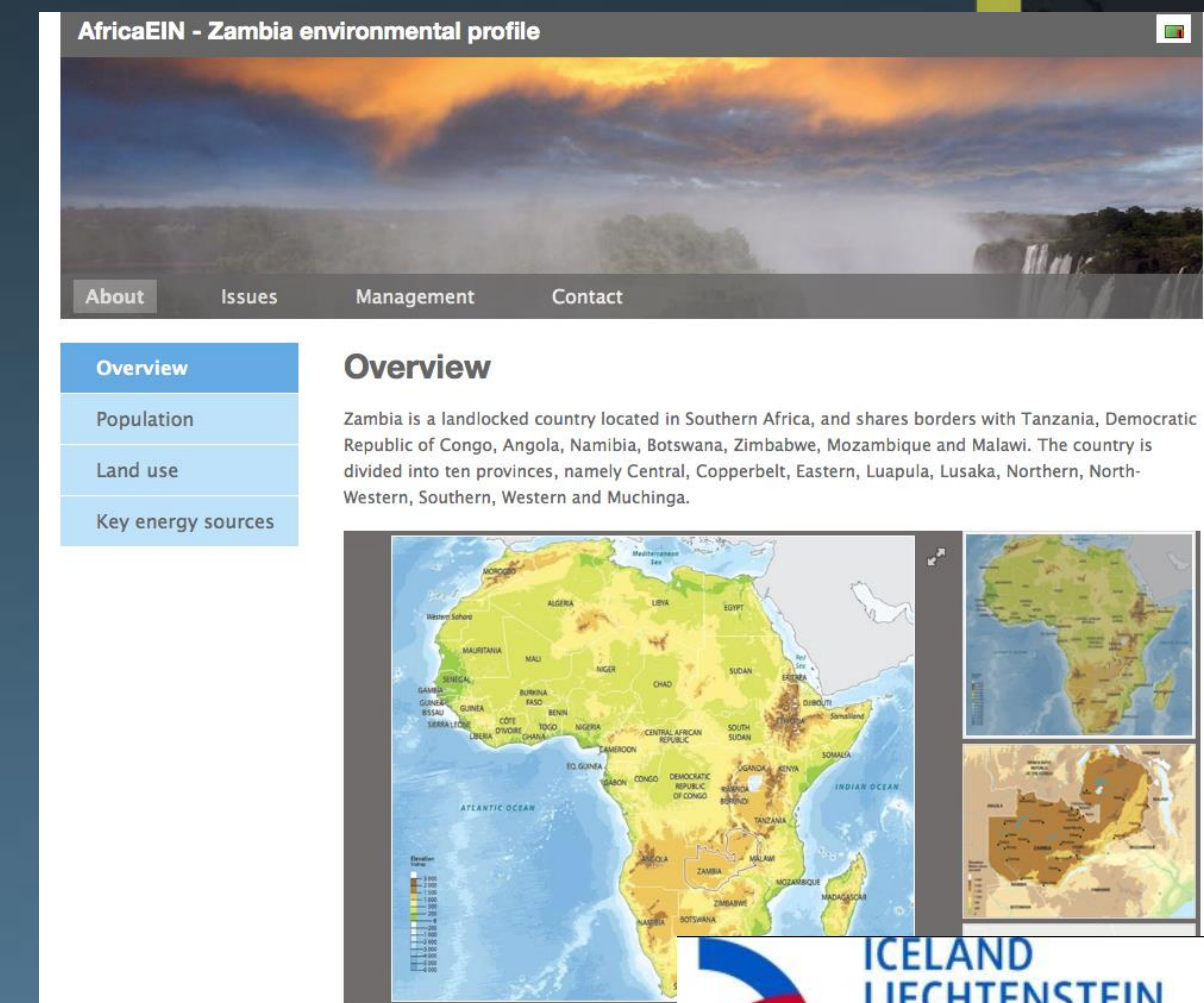
  - *Climate Change and Security in EECCA region*



# Capacity Building & Assessments

- Support to ODA countries in environmental management
  - *Chemical Safety: Support for Global Treaty on (Minamata Convention)*
- Environmental Information networks
  - *Caspian Environmental Information Center (CEIC)*
  - *Africa Environment Information Network*
- Projects under the EEA/Norway grants
  - *Waste management*
  - *Climate change communications*

Mercury



MERCURY



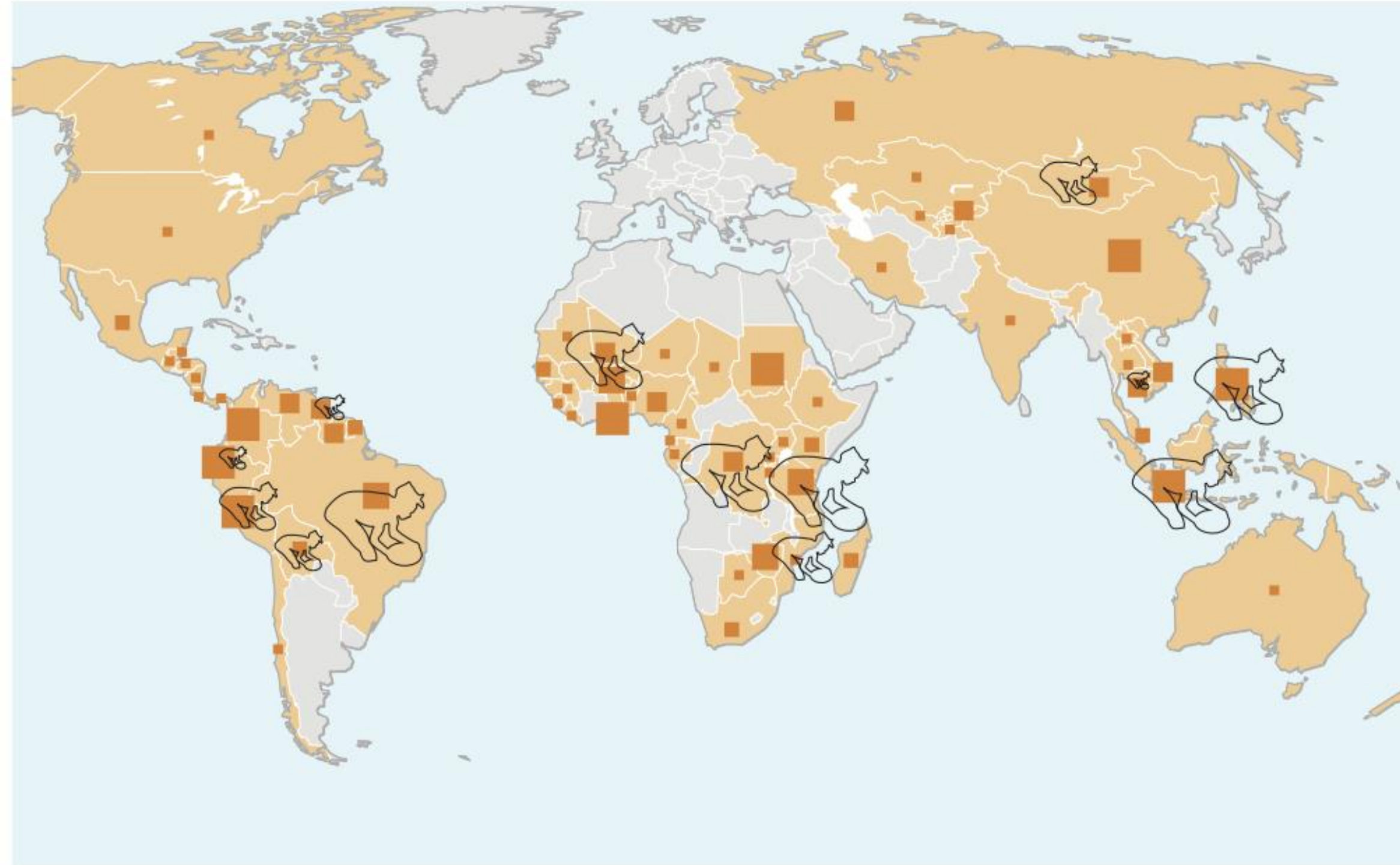
TIME TO ACT



# Online Services

- Maps, Graphics, Publications library





### Artisanal and small-scale gold mining (ASGM)

Estimated mercury releases from ASGM in tonnes per year

- 0-5
- 5-10
- 10-25
- 25-50
- 50-500

Estimated numbers of miners

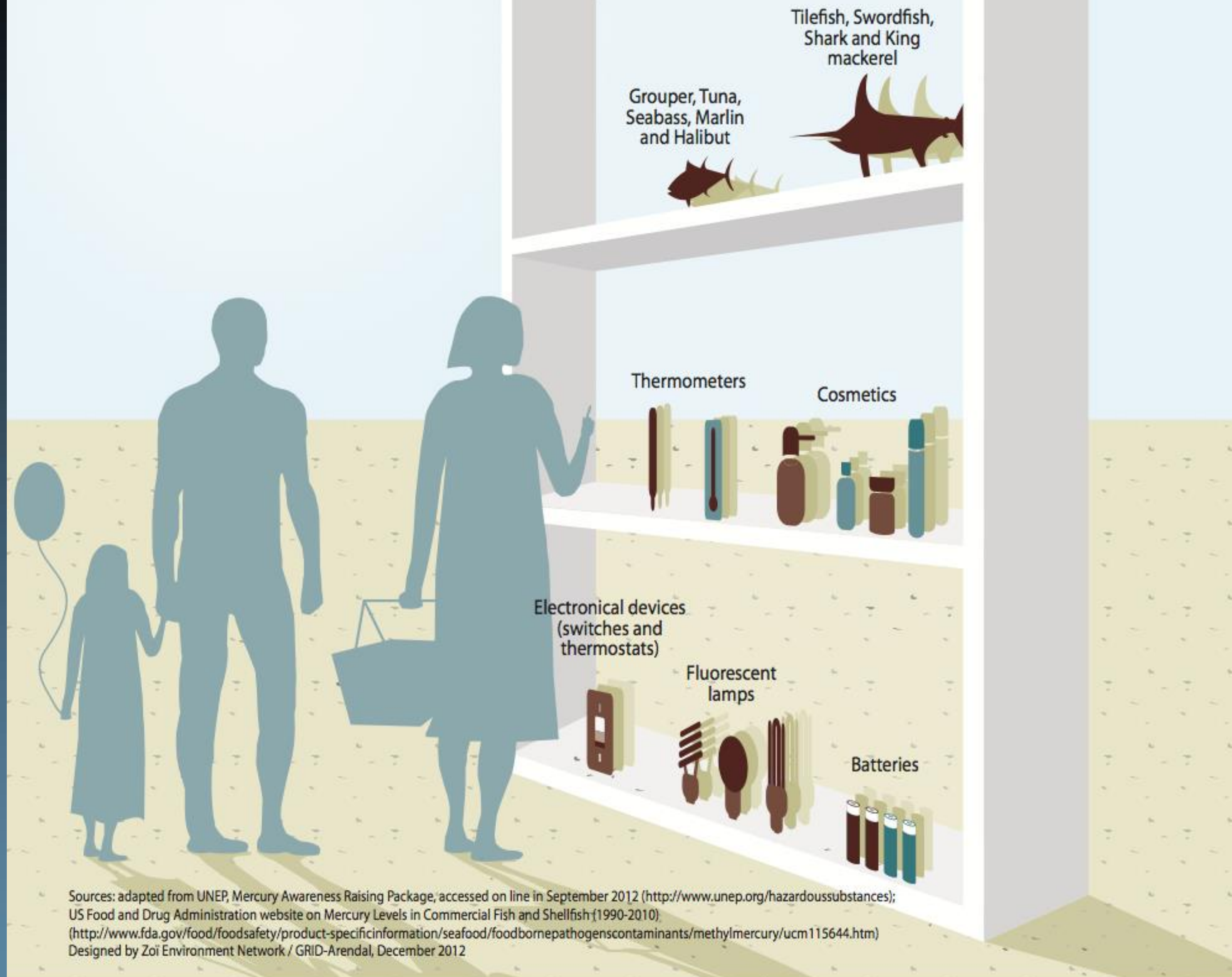
- 👤 10,000
- 👤👤 100,000
- 👤👤👤 500,000

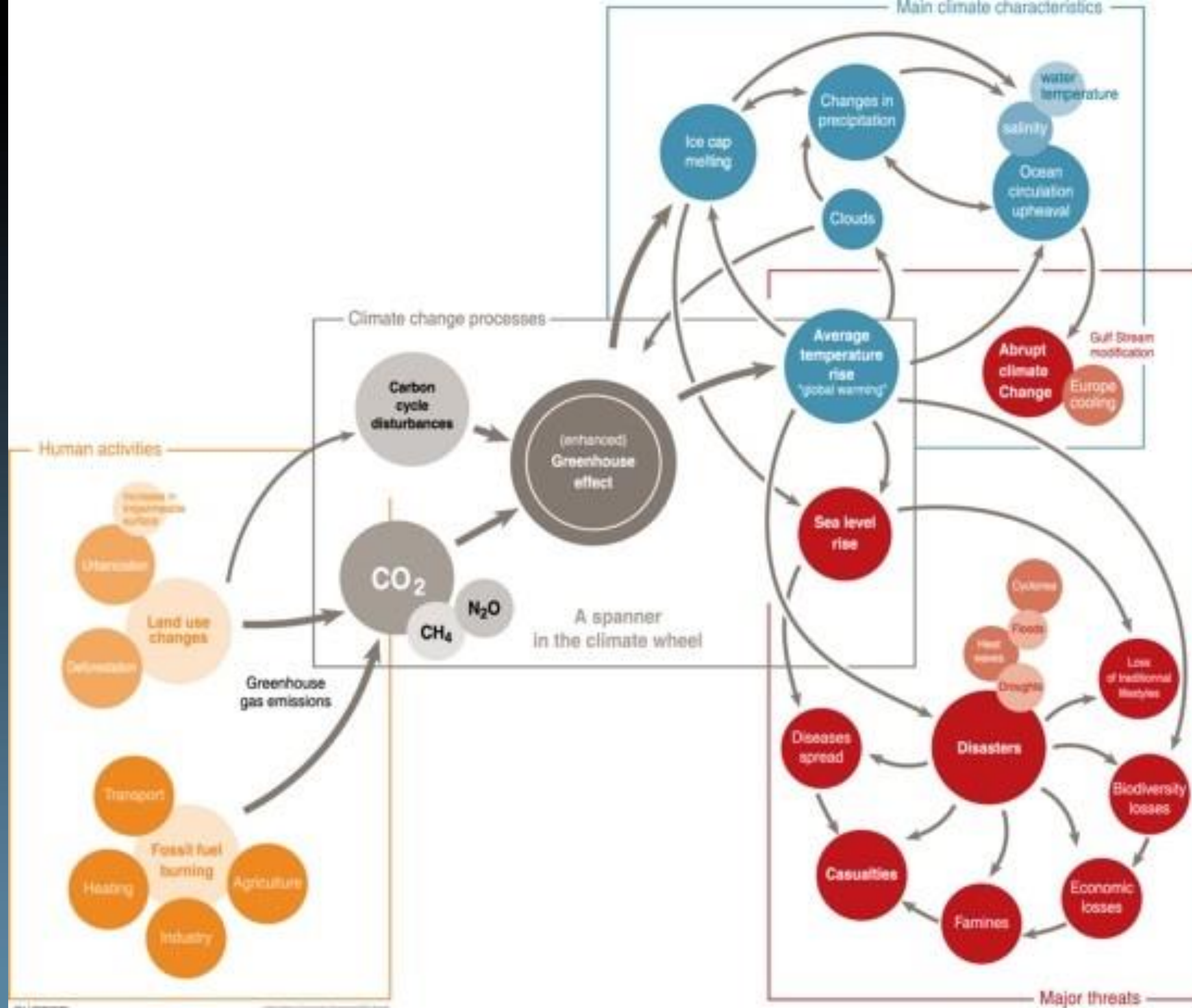
■ Reported countries with ASGM

■ No estimate

Source: Adapted from Mercury Watch database (> [www.mercurywatch.org](http://www.mercurywatch.org)); UNEP Global Forum on Artisanal and Small-scale gold mining Manila, 8th December 2010  
 Designed by Zoi Environment Network / GRID-Arendal, December 2012

## Mercury in food and products

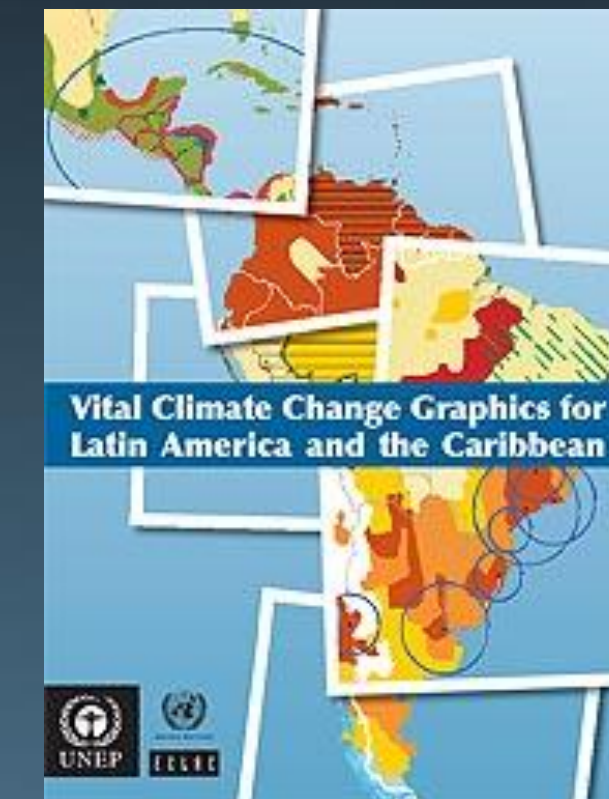
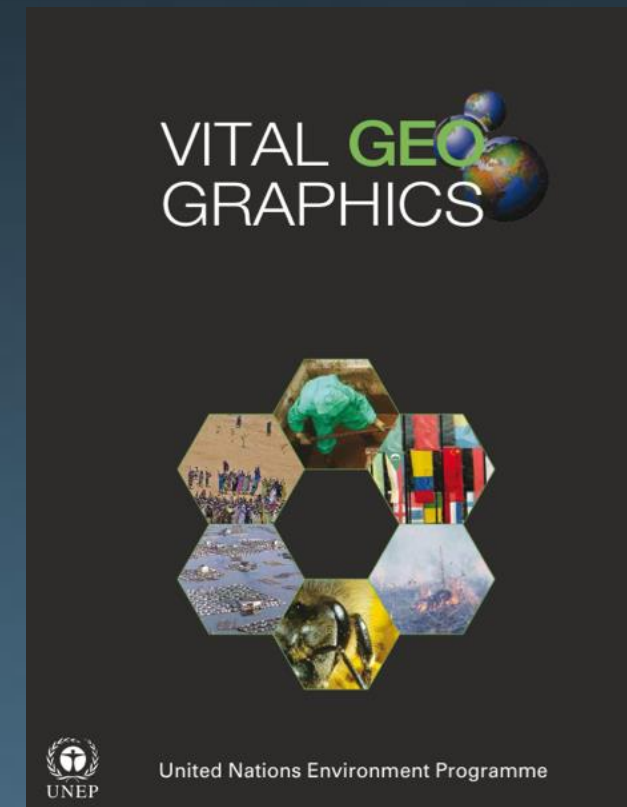
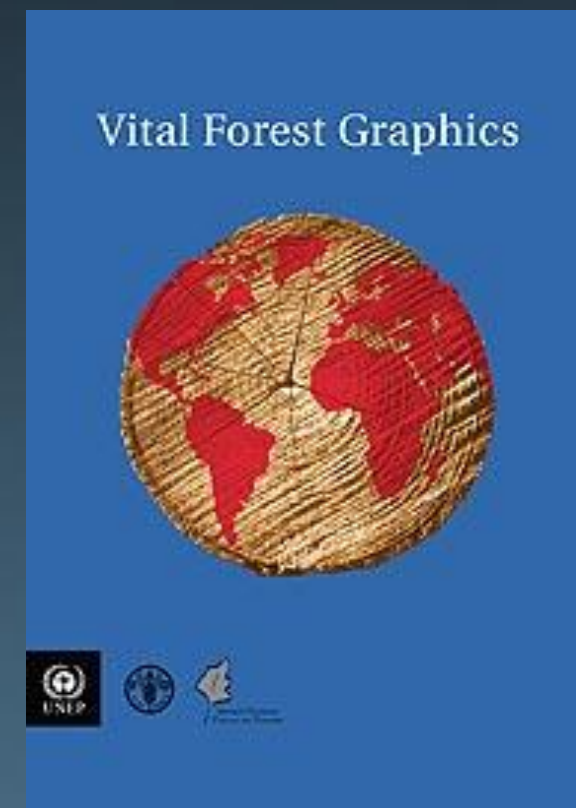
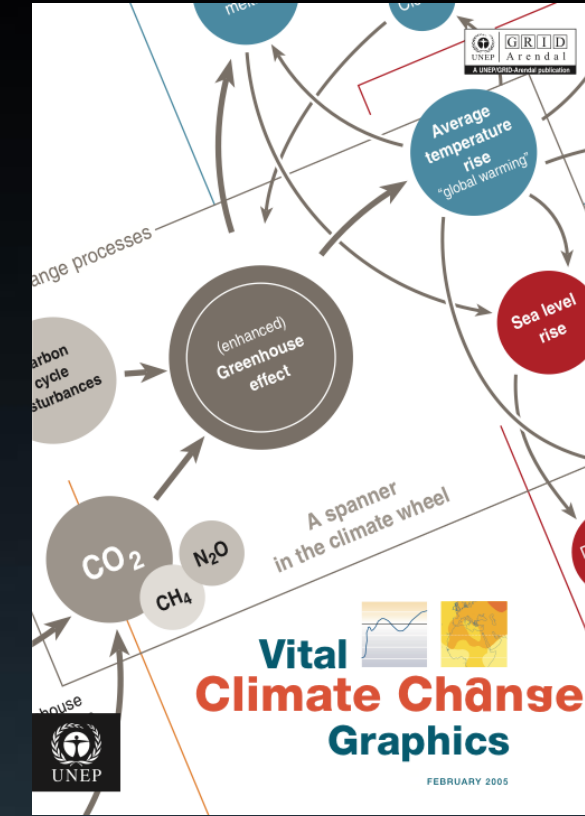
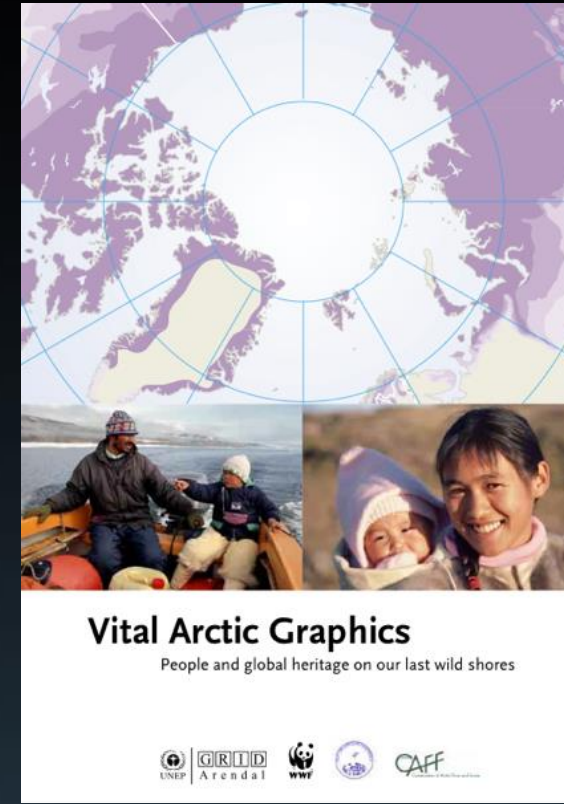
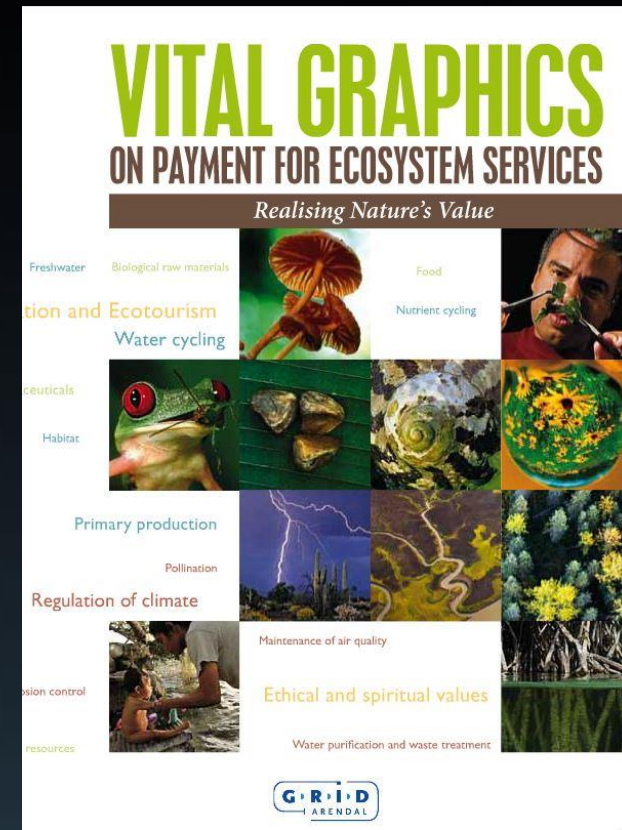




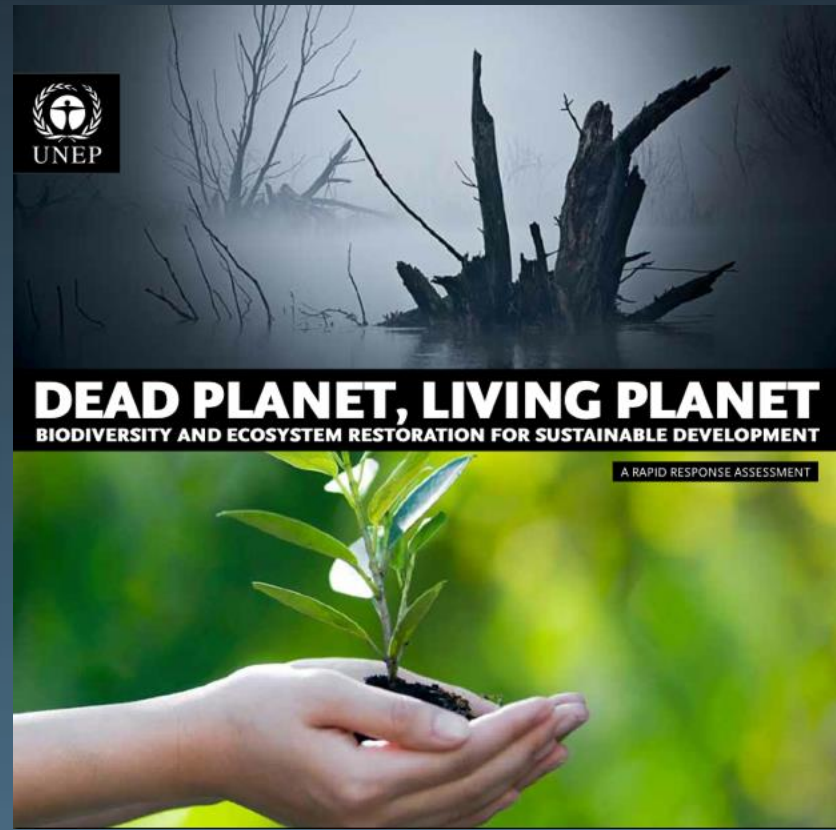
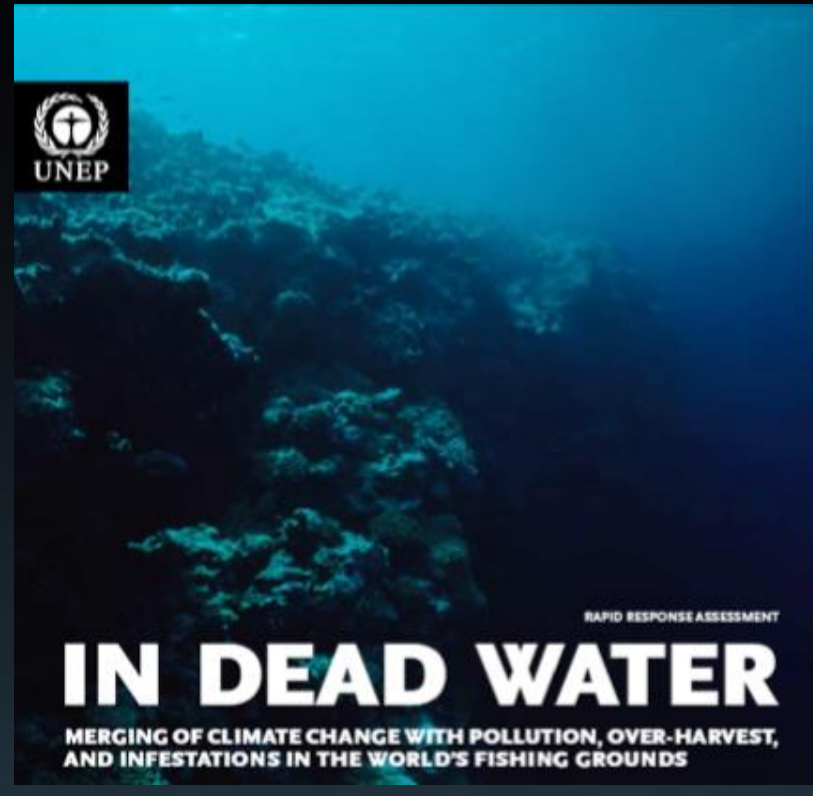
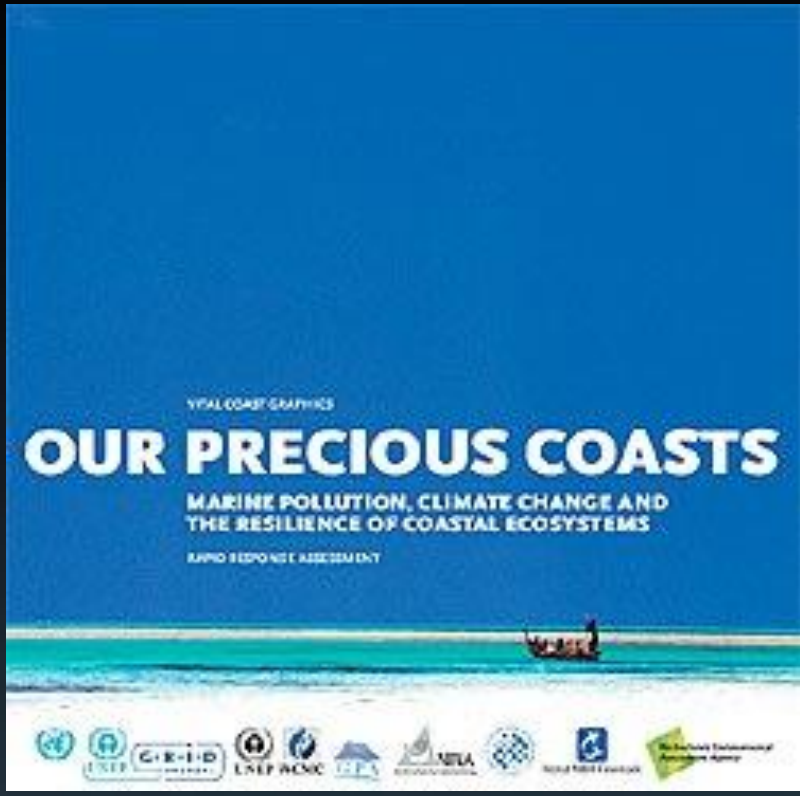
# Online Services

- Maps, Graphics, Publications library

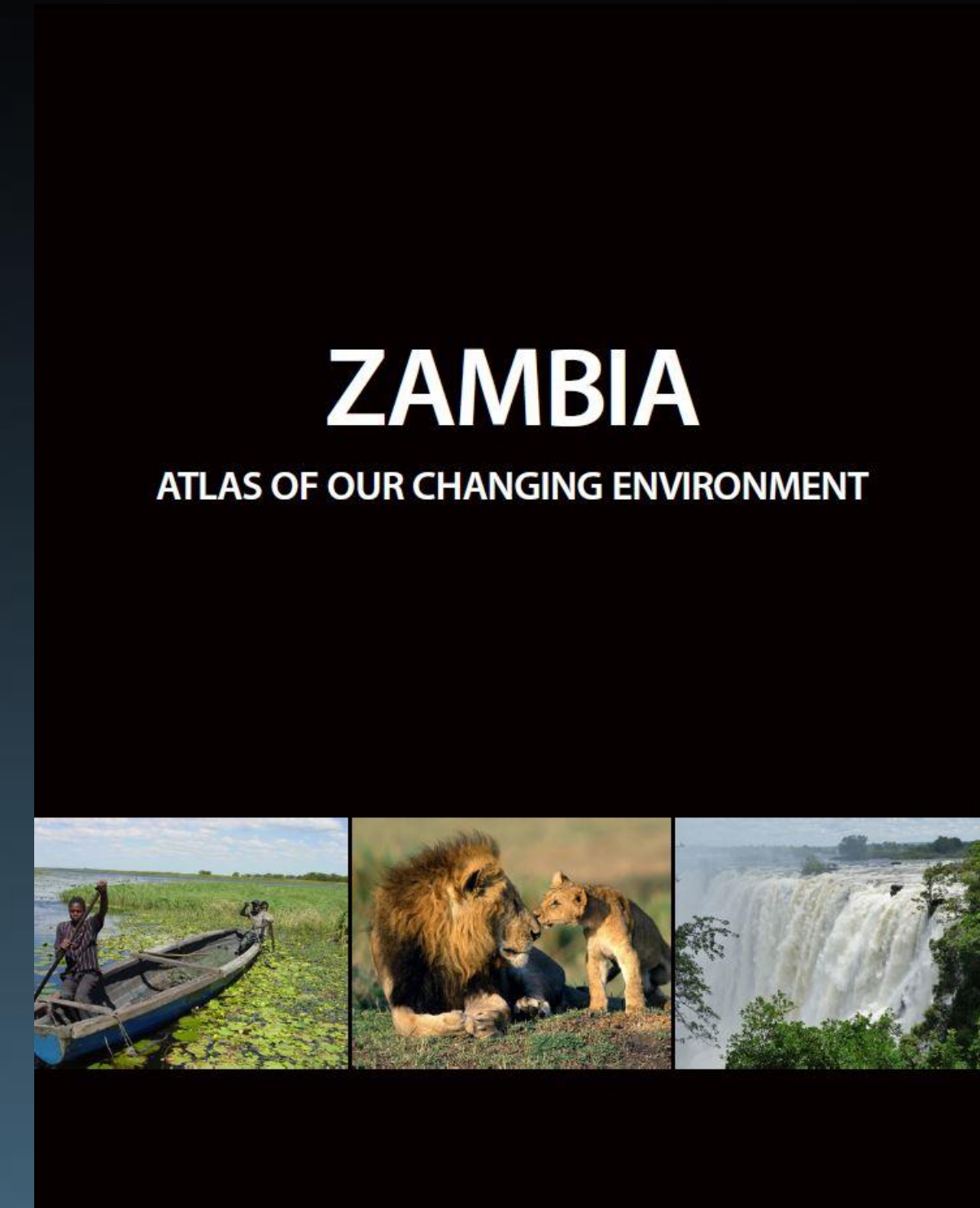
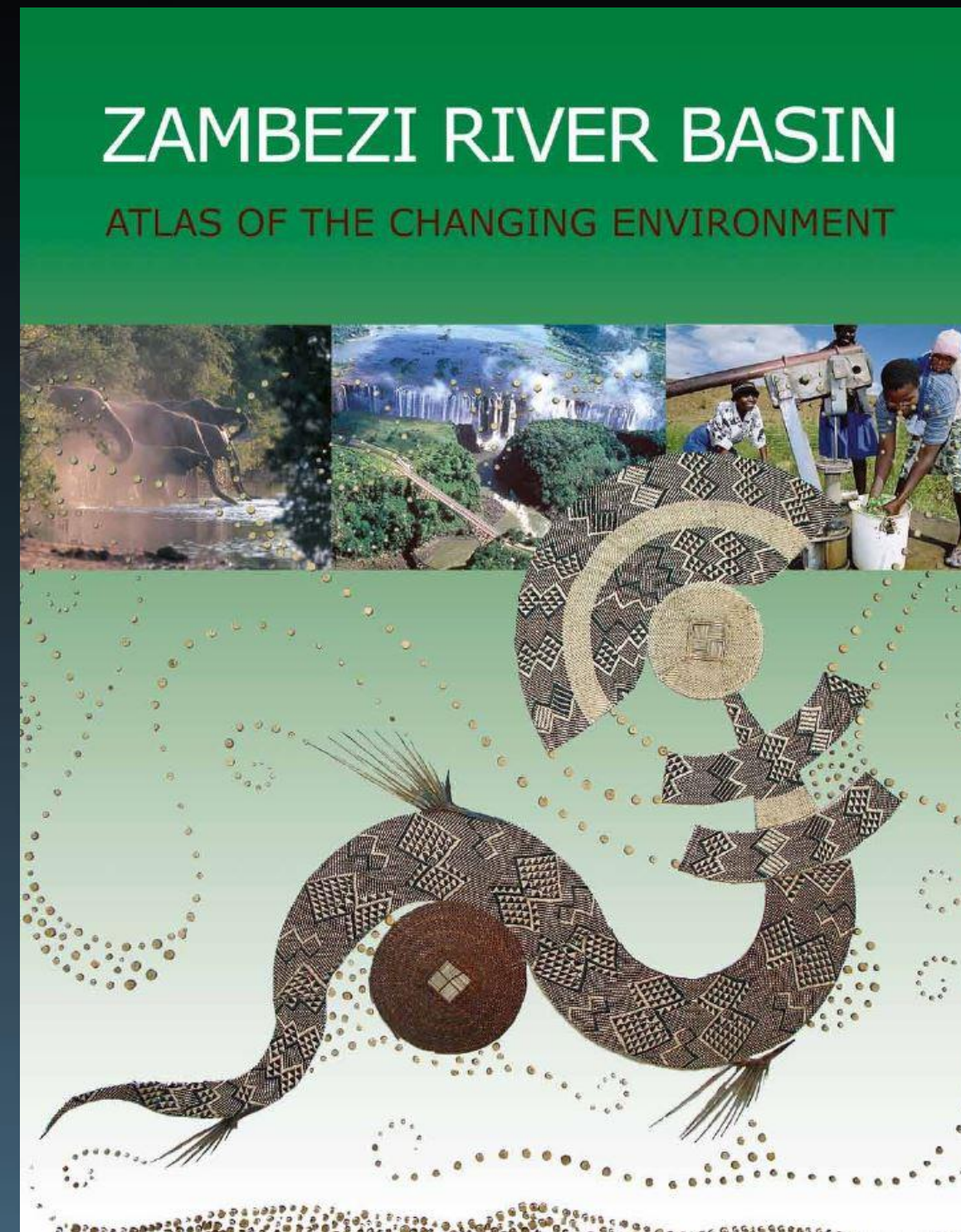
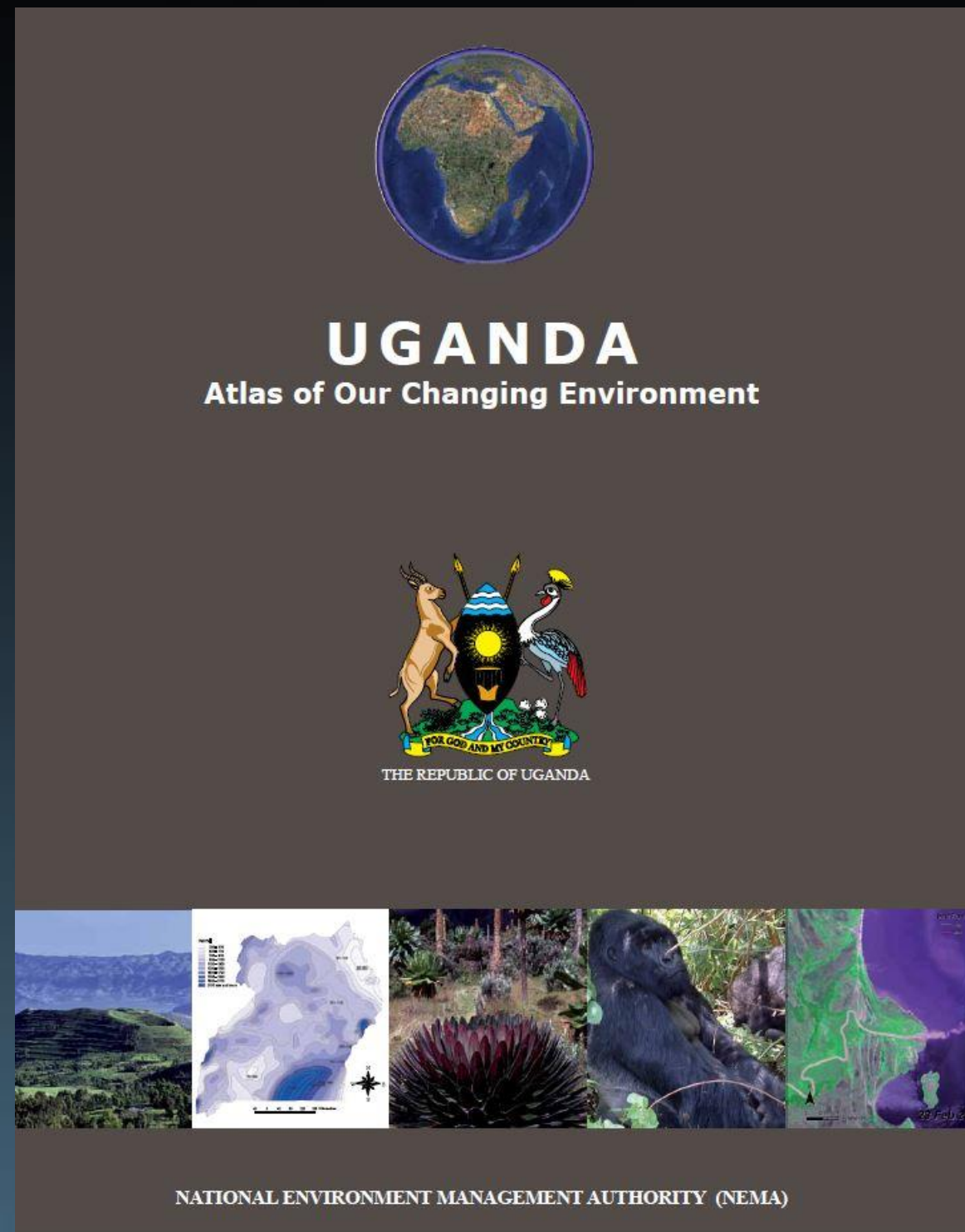
# Publications



# Vital Graphics Series

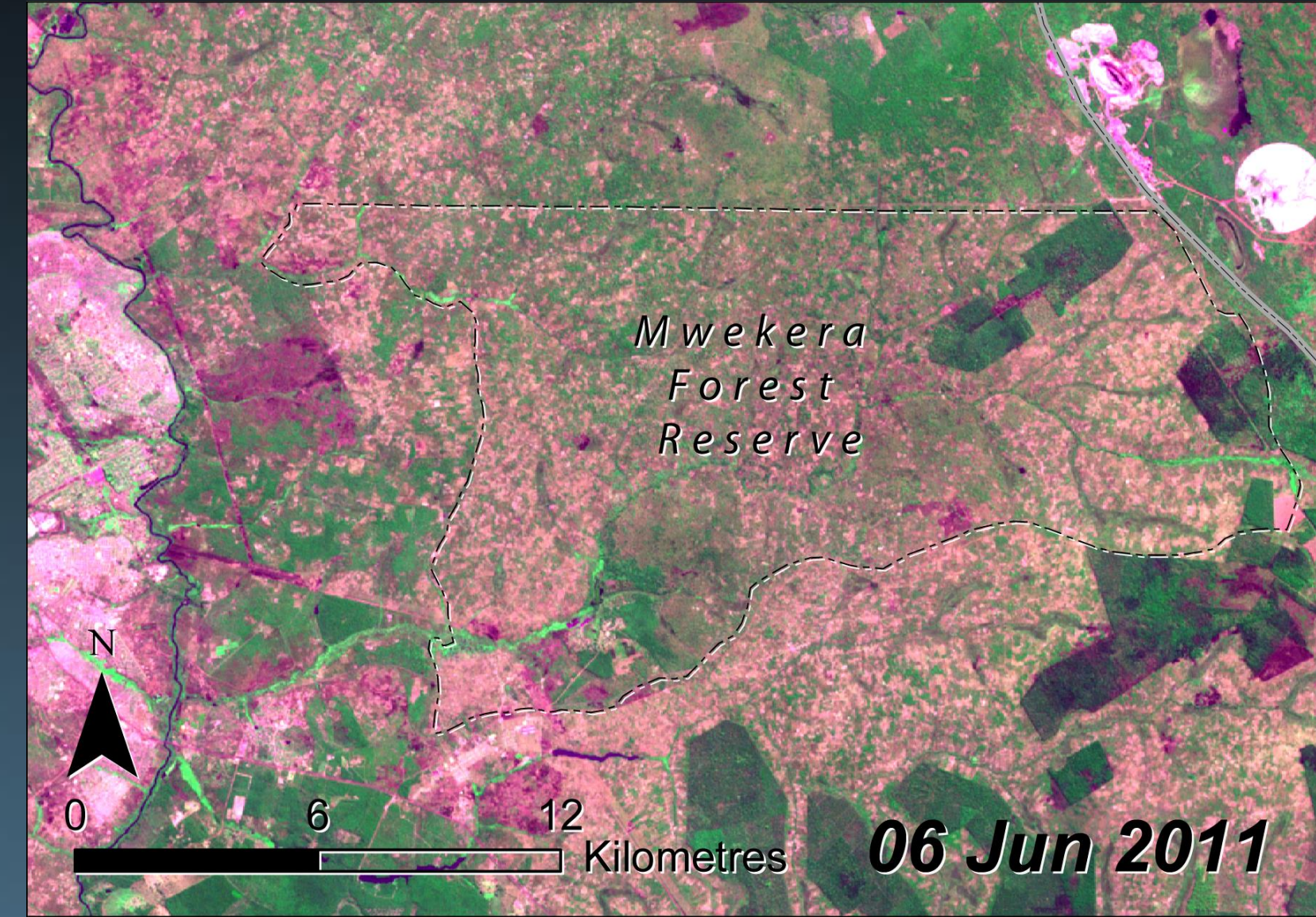
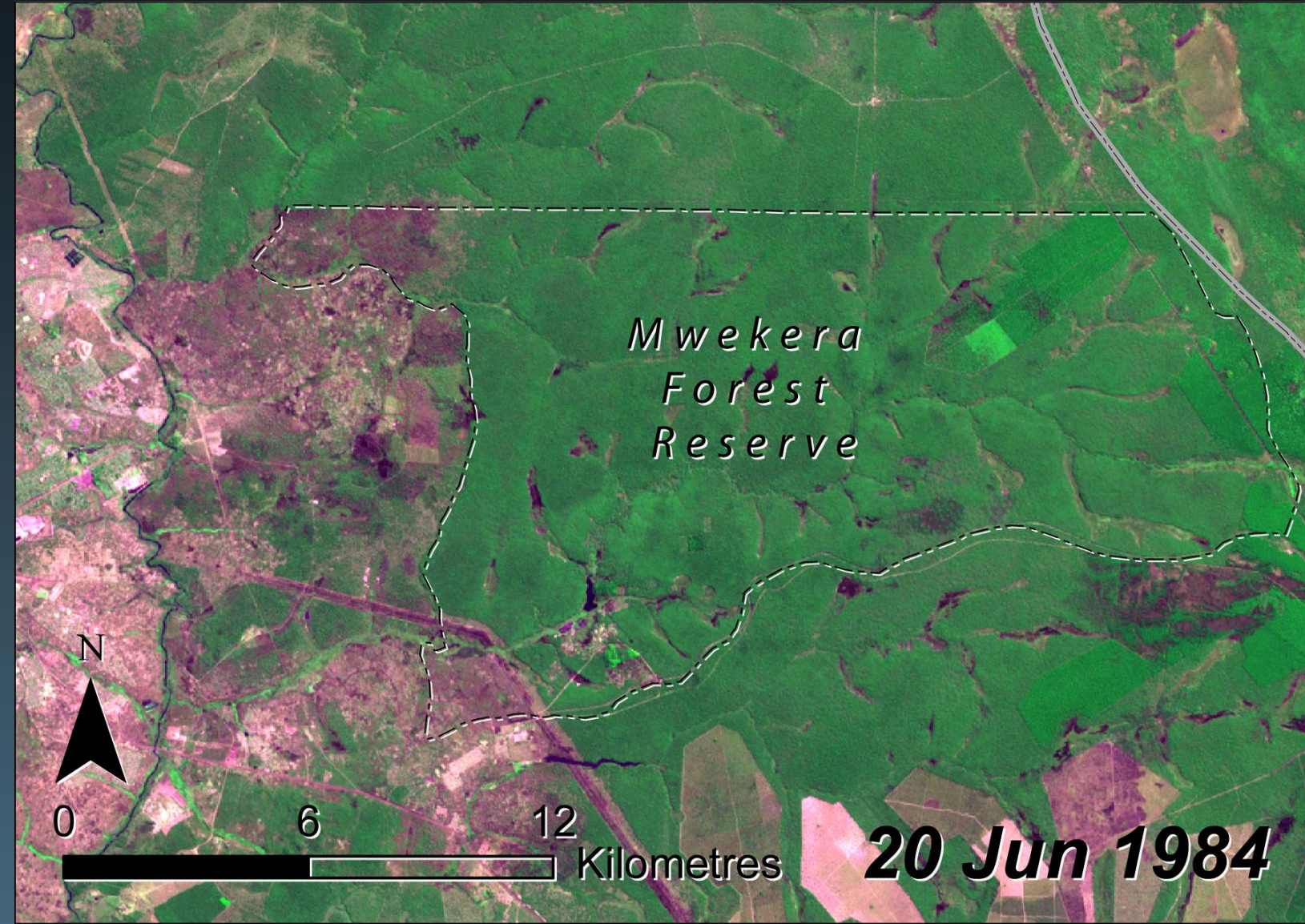


# Rapid Response Assessments



# Atlases of the Changing Environment





# Atlases of the Changing Environment

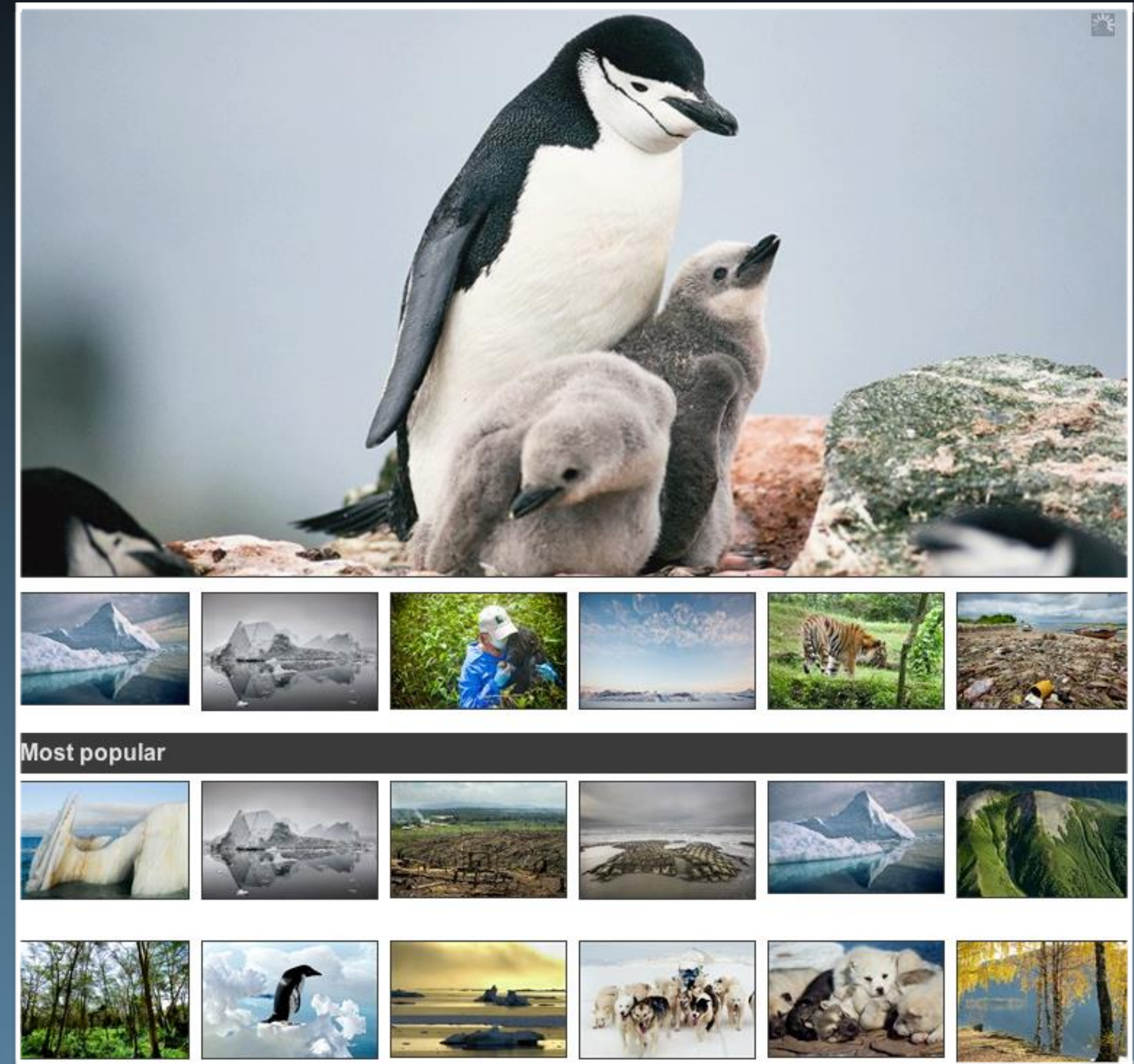
# Online Services

- Maps, Graphics, Publications library
- E-books



# Online Services

- Maps, Graphics, Publications library
- E-books
- Photo library



# Online Services

- Maps, Graphics, Publications library
- E-books
- Photo library
- Video/film development

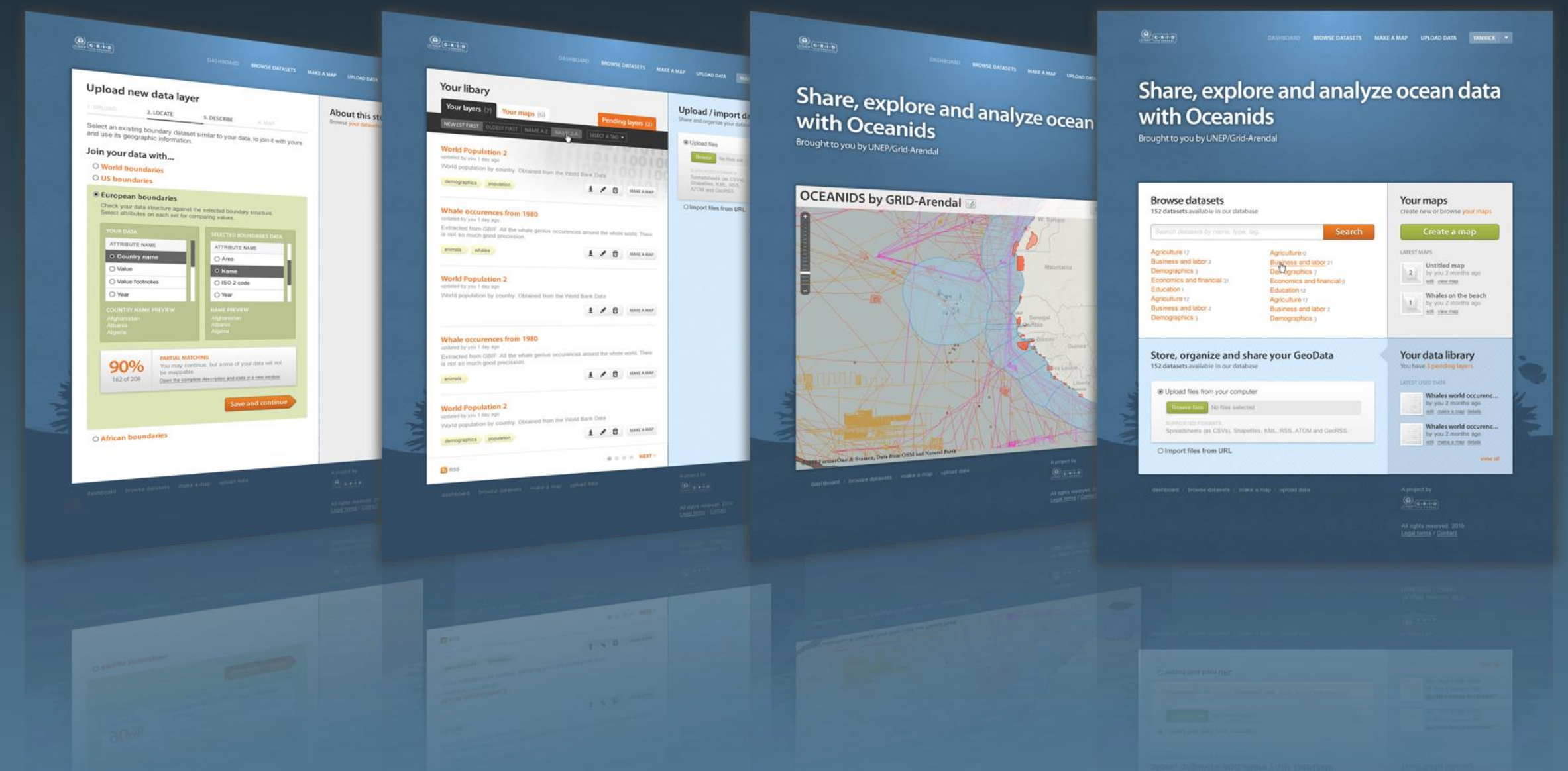
# Online Services

- Maps, Graphics, Publications library
- E-books
- Photo library
- Video/film development
- iPad, iPhone, iPod Publication Library



# Online Services

- Maps, Graphics, Publications library
- E-books
- Photo library
- Video/film development
- iPad, iPhone, iPod Publication Library
- GeoNode/ArcGIS On-line Mapping Application



# Local and International Outreach

# What are you doing **to save the environment**



[www.grida.no](http://www.grida.no)

**Taking the Environment Seriously**





## Did you know?

Roughly **one third** of the food produced in the world for human consumption every year - approximately 1.3 billion tonnes- gets **lost or wasted**



Taking the Environment Seriously  
[www.grida.no](http://www.grida.no)



please digest this information it's edible...

# eat me!



## Did you know?

The **recycling** of a single beer can could save enough **energy** to run a computer for up to **three hours**



Taking the Environment Seriously  
[www.grida.no](http://www.grida.no)



please digest this information it's edible...

# eat me!



## Did you know?

**60% of cars** have only one occupant. This increases to approximately **85%** for commuting and business trips



Taking the Environment Seriously  
[www.grida.no](http://www.grida.no)



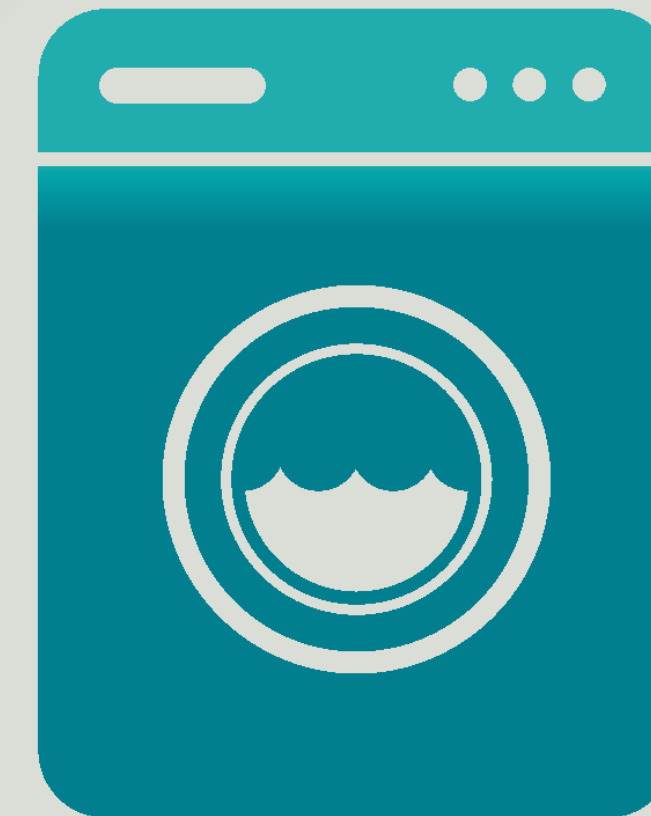
please digest this information it's edible...

# eat me!



## Did you know?

**85 – 90%** of the energy used to wash your clothes is used to **heat the water**



Taking the Environment Seriously  
[www.grida.no](http://www.grida.no)



please digest this information it's edible...

# eat me!





*A Centre Collaborating with UNEP*

Thank You!